

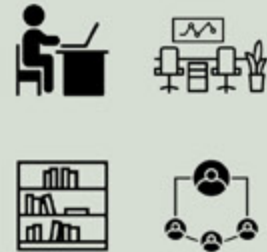
At the end of the pandemic, Giulia's employers decided to provide their workers greater opportunities to work from home (WFH). Giulia has resolved to work in this manner every other day. Roberto, on the other hand, has established his own startup from home and occasionally summons his partner to work here.

Lets Meet the Family...

Husband

Roberto, 38 was a consultant working in an firm, during covid he decided to open his startup. His requirements of space are -

- A quiet working environment
- Working place for 2-3
- Space to keep books
- Formal feel to working space



Children

They have two children namely Anna, 13 and Henry, 10. Both are energetic, Anna loves dancing and Henry is fond of karate. They are missing out on going outside to practice due to covid restrictions.



The family is very social and host gatherings. Since their house has become a working office, they desire a more pleasant home atmosphere in order to better organise the working environment and a means to keep personal, social, and working environments distinct. They're both really creative and social. As a result, they decided to seek for a better house that would accommodate their active way of life.



Wife



Giulia, 36 is a creative person and a animator by profession. She loves music and her space for working keeps changing. Her requirements of space -

- Desktop space
- Able to blast music while working and cooking
- Moodboards, design books, positive environment



Creating **Hybrid Spaces** catering to people across different **occupations**



Creating space for **living** as well as **working** (office / school / college) for each member of the family



Designing a **flexible** floorplate which reflects its **function** at different times of the day



Creating **dynamic spaces** for the **post-covid** era

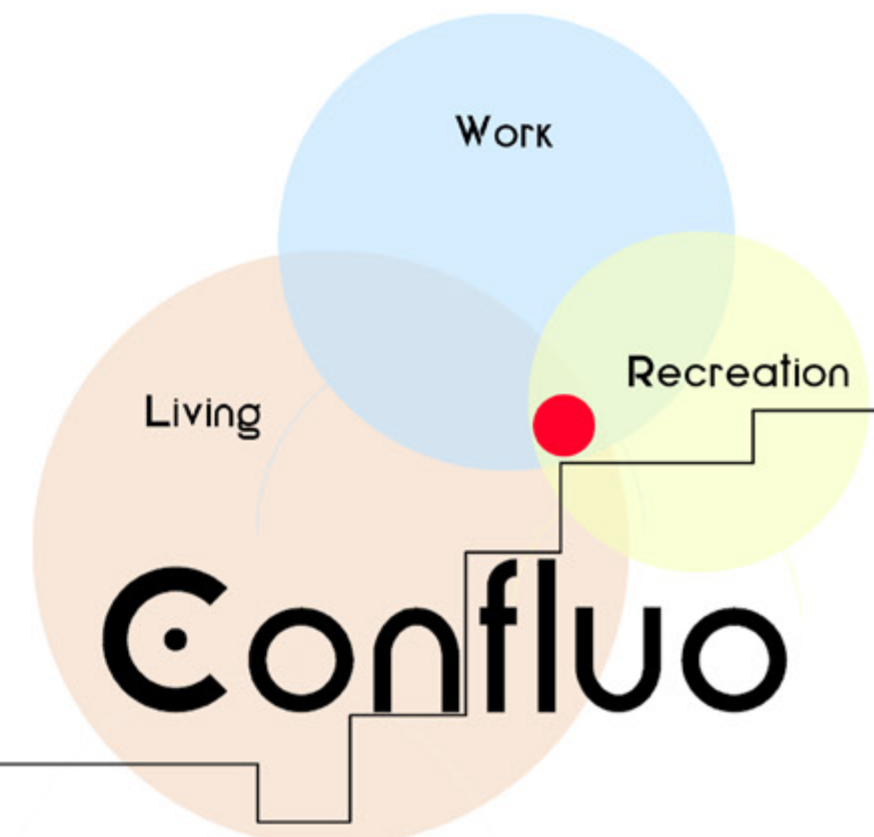


Creating **self-sustainable** community.



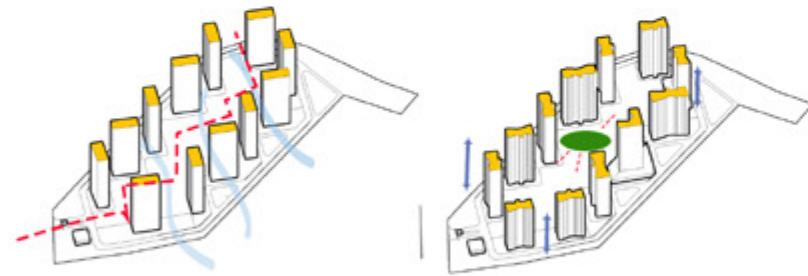
Connecting users, built environment and nature.

B
J
E
C
T
I
V
E
S

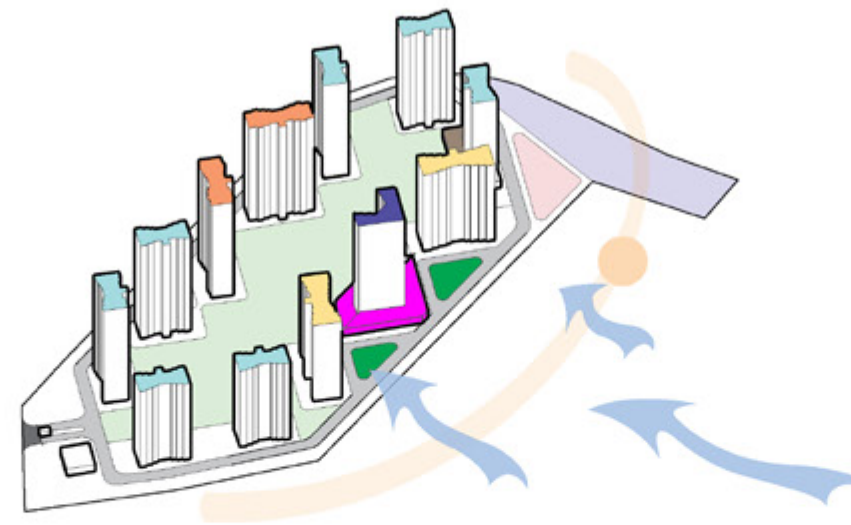


Context

Project Confluo is a mass housing society located near eastern express highway, Mulund, Mumbai. It is designed on a 12 acre plot with a goal of making a environment friendly and self sustainable community. It has 12 building ranging in heights of 45 to 70m and a big central space with amenities and a small patch of dense plantation.

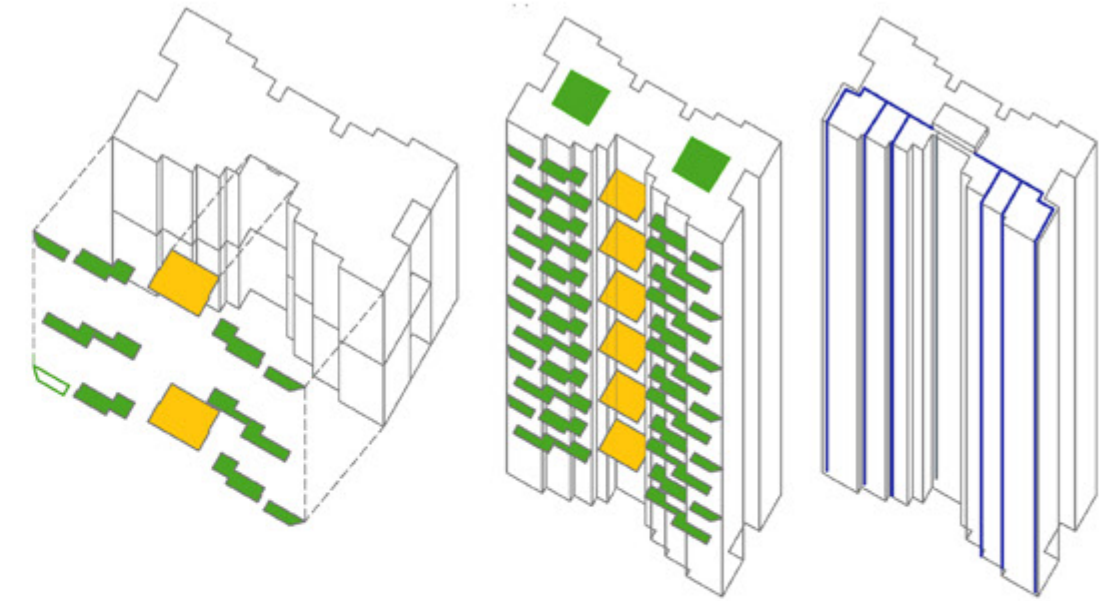


Evolution



- | | | |
|------------------|------------------|------------------|
| 2 Bhk Building | Club house | Services |
| 2.5 bhk Building | Shopping centre | Handover to MCGM |
| 3 BHK building | Dense plantation | LOS 30% |

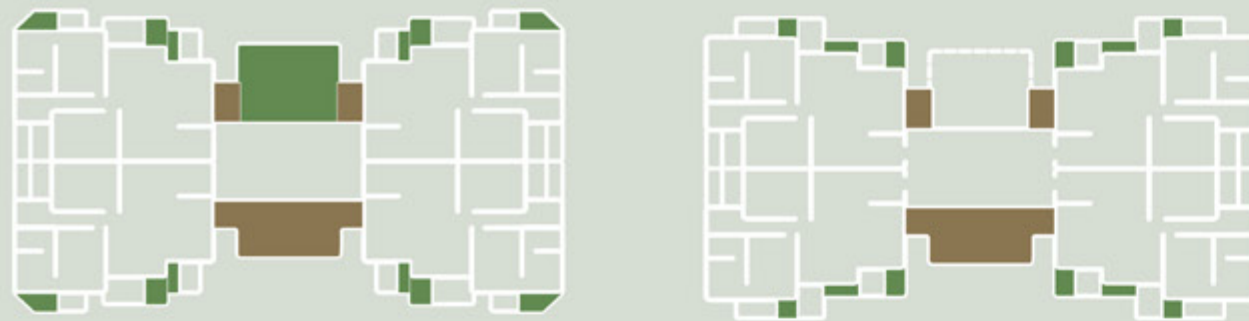
Zoning



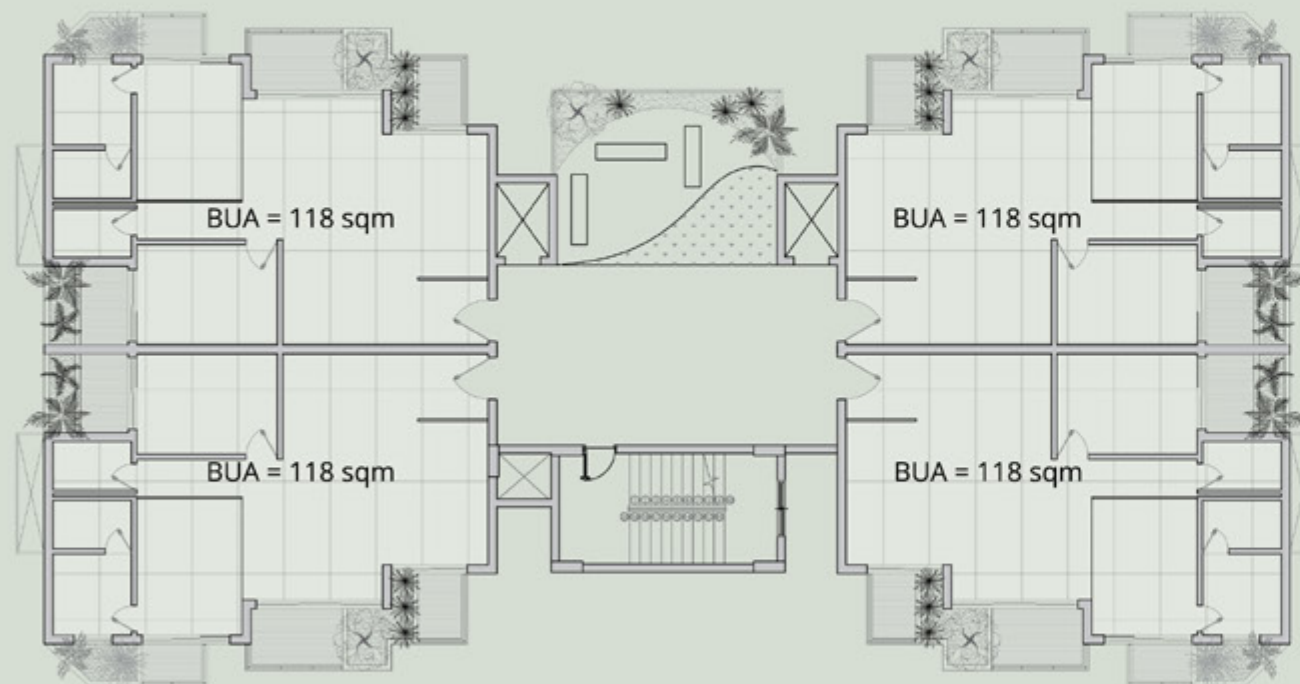
Alternating balconies and communal terrace forms the facade of each building

Treated grey water to be reused to supply water to plantations using drip irrigaton

Form development



Alternating balconies and double height plantation space



2 BHK building floor plan

Service core

Plantation in balcony

Urban farming on terrace and in balconies = Clean food

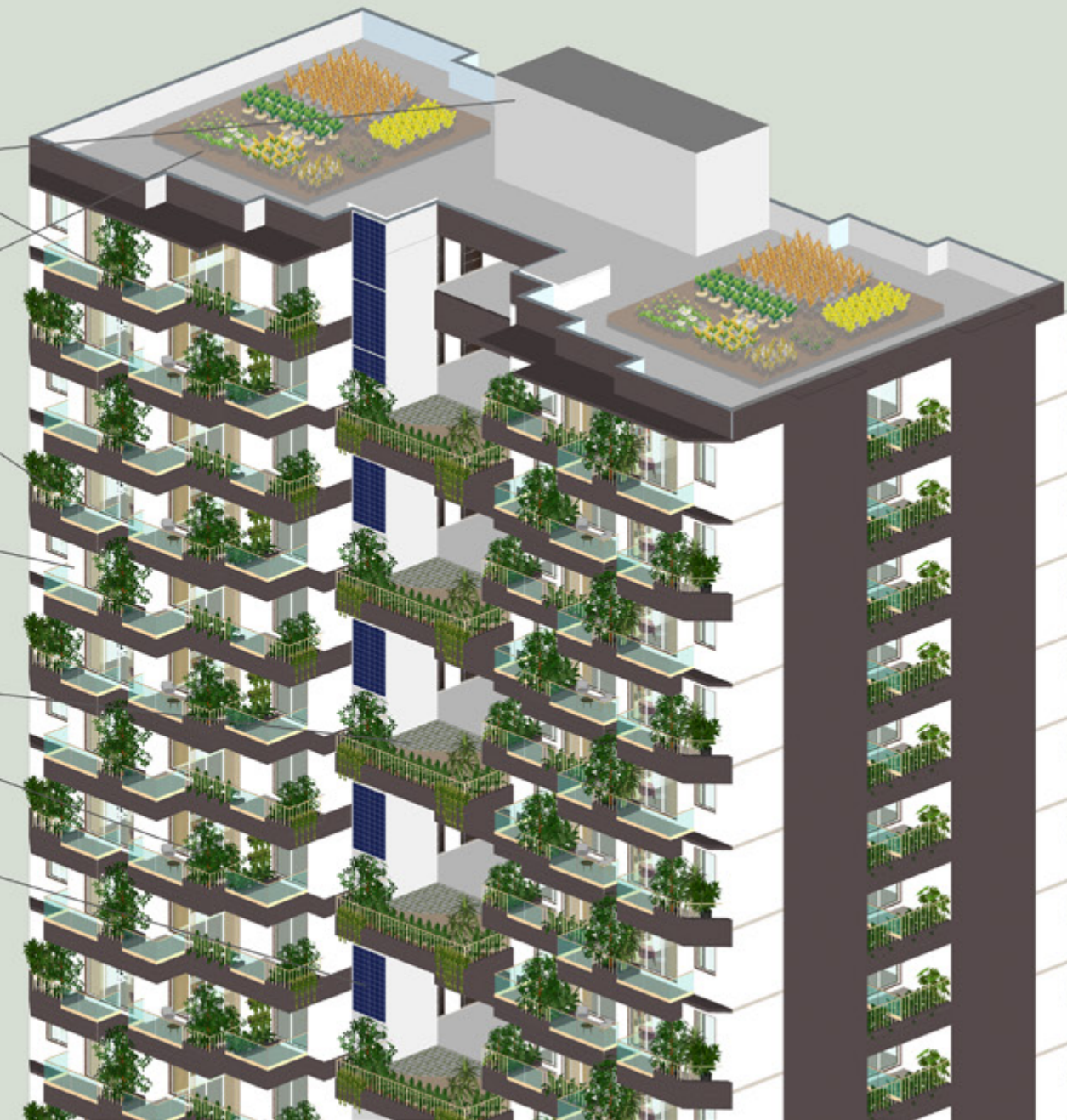
Use of recycled water by drip irrigation for keeping plants green.

Use of recycled plastic bricks -making it carbon neutral.

Community gathering/play- ing point on alternate floor.

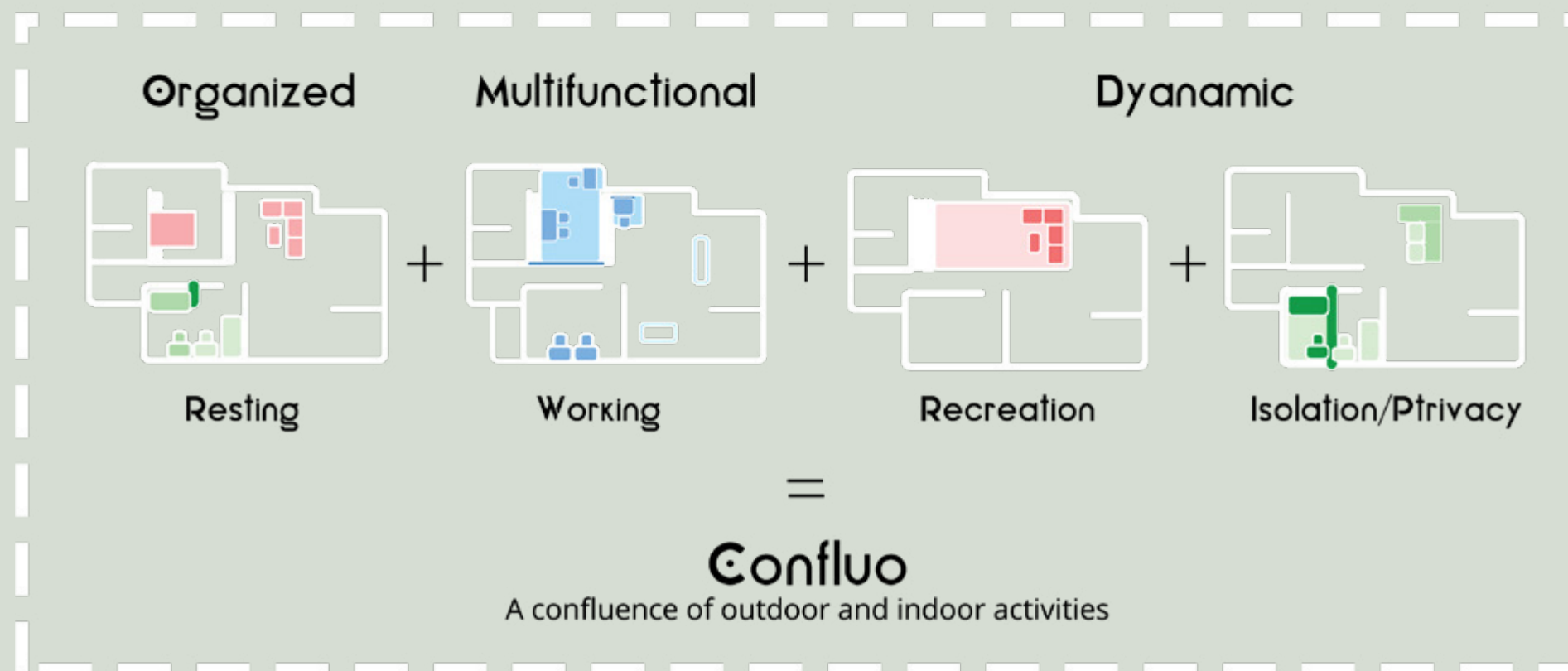
Double height open space for plant to grown tall.

Solar panels on south facing ducts to harness energy



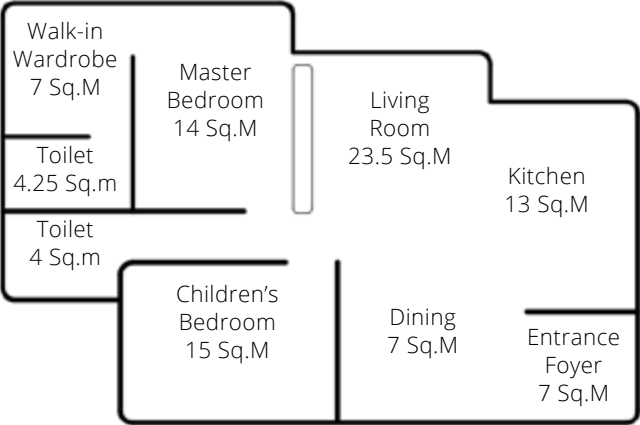
Concept

During the lockdown, Roberto and Guilia saw the limitations of their confined spaces and how the cohabitation of business and personal life was hard. It became difficult to explain to others when it was work time and when it was family time. The crucial word here is adaptation, or coming to terms with the fact that the home-work duality that formerly existed in two separate locations must now exist exclusively inside the domestic dimension. Confluo is our solution to this issue. Confluo is the cohabitation and merging of different activities in the home by adhering to the three functionality principles listed below. With these users will be able to have new settings that are flexible to all of their demands .

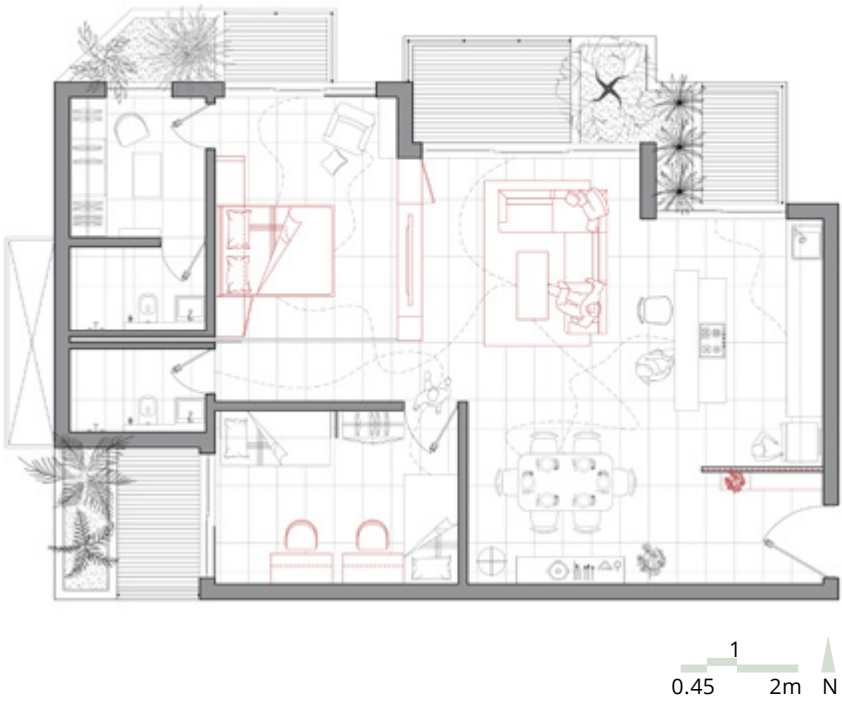


Organized

Home is a location where individuals bond, relax, and rest with family members; it is an orderly environment with a usual setting and well-defined spaces. The unit has a herb garden in front of the kitchen and flower plants near the living and sleeping areas. The neutral wall colours add a sense of calm to the environment.



Space division



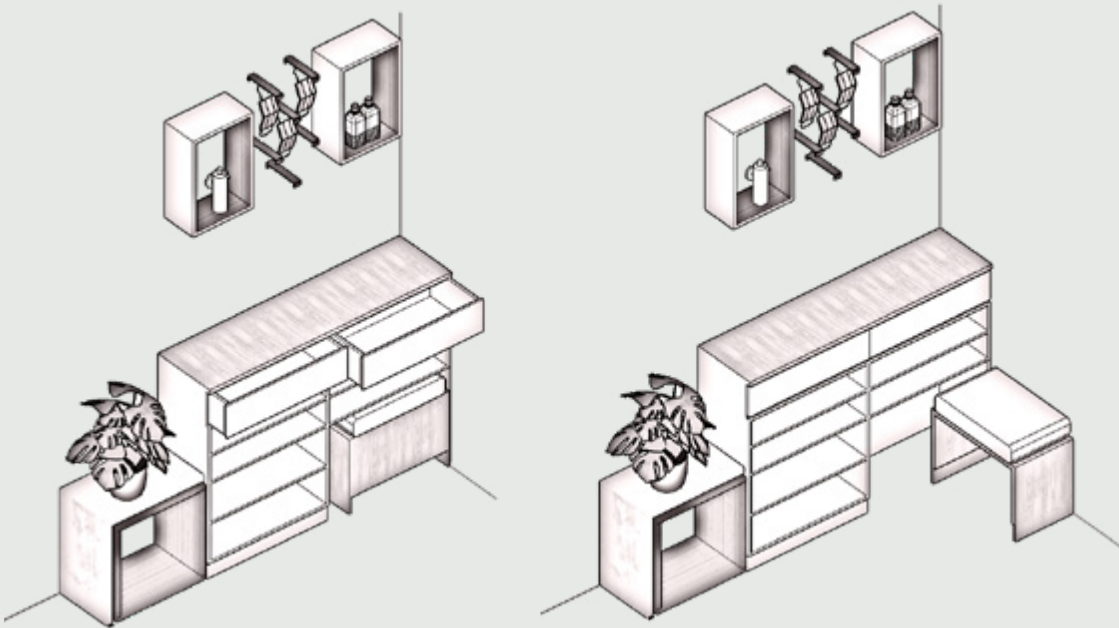
Early morning, Guilia prepares food in kitchen, Robert is watching market news and kids are getting ready for online classes(during covid)/ for school(after covid).



Axonometric

The natural hues of the project are drawn from the wooden parts and the green of plants. Grey and neutral colours are prevalent throughout the space. Burgundy and copper are used as accents.

Entrance area
Sanitization and shoe unit



The sage-and-white trim makes the sofaset pop and adds interest to the setting. Thick draperies paired with a woven sofa and reclaimed wood batten in backdrop create an inviting seating area made for conversation and relaxation.

Colours



Texture



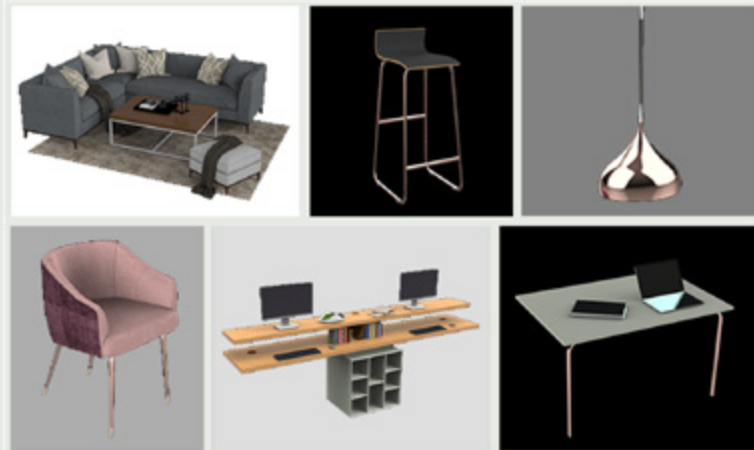
The texture palette chosen gives a sophisticated and luxurious vibe. The accent of copper brings energy and compliments the lighting of the space.



Living

The central movable display unit is constructed with as few pieces as possible to allow for easy movement across the floor. The wooden and concrete texture makes it a focal unit.

Pieces



Deco



The sage green interiors are complemented with contemporary and elegant furniture and decor elements of wood, copper and glass.



Kitchen



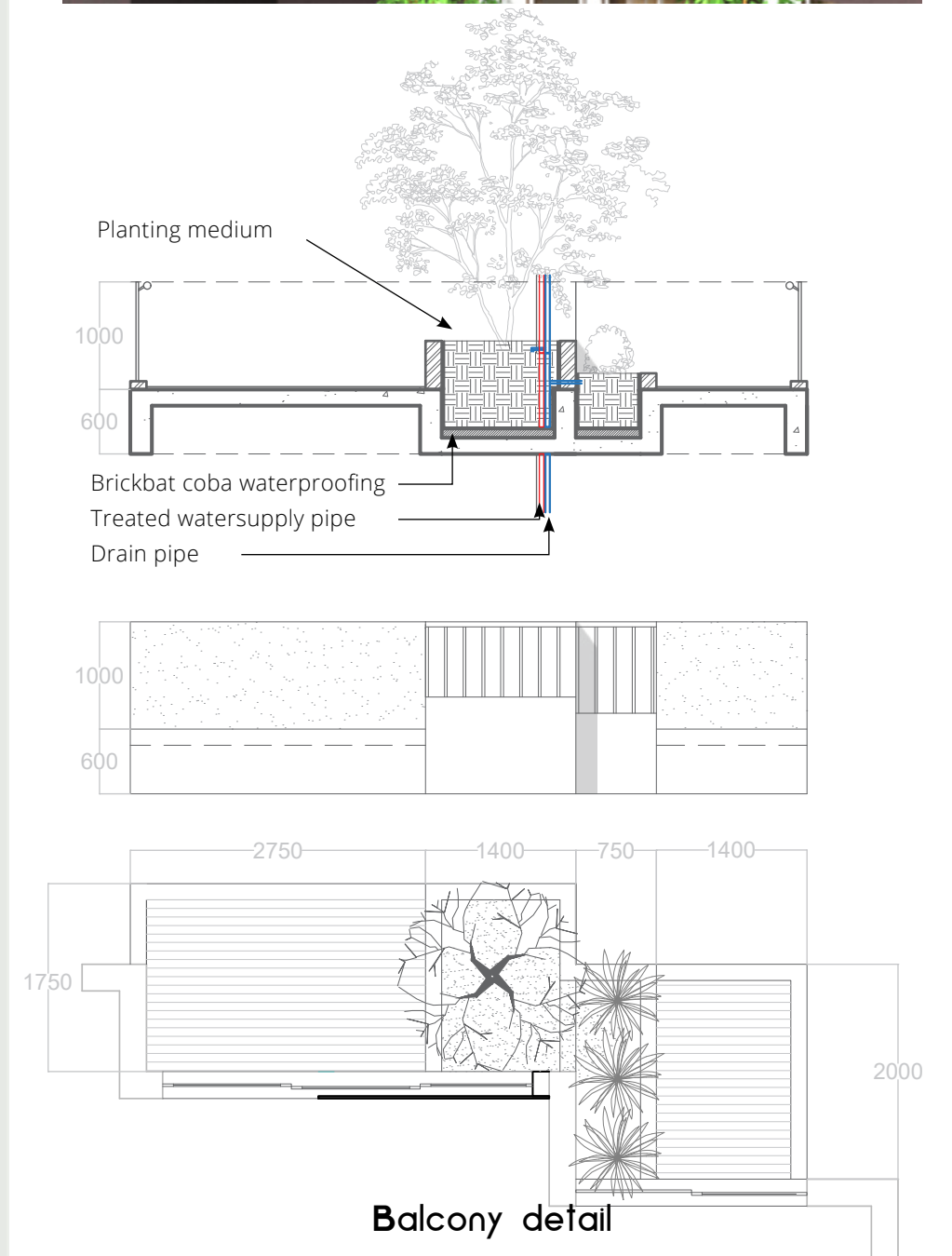
Dining



Entrance

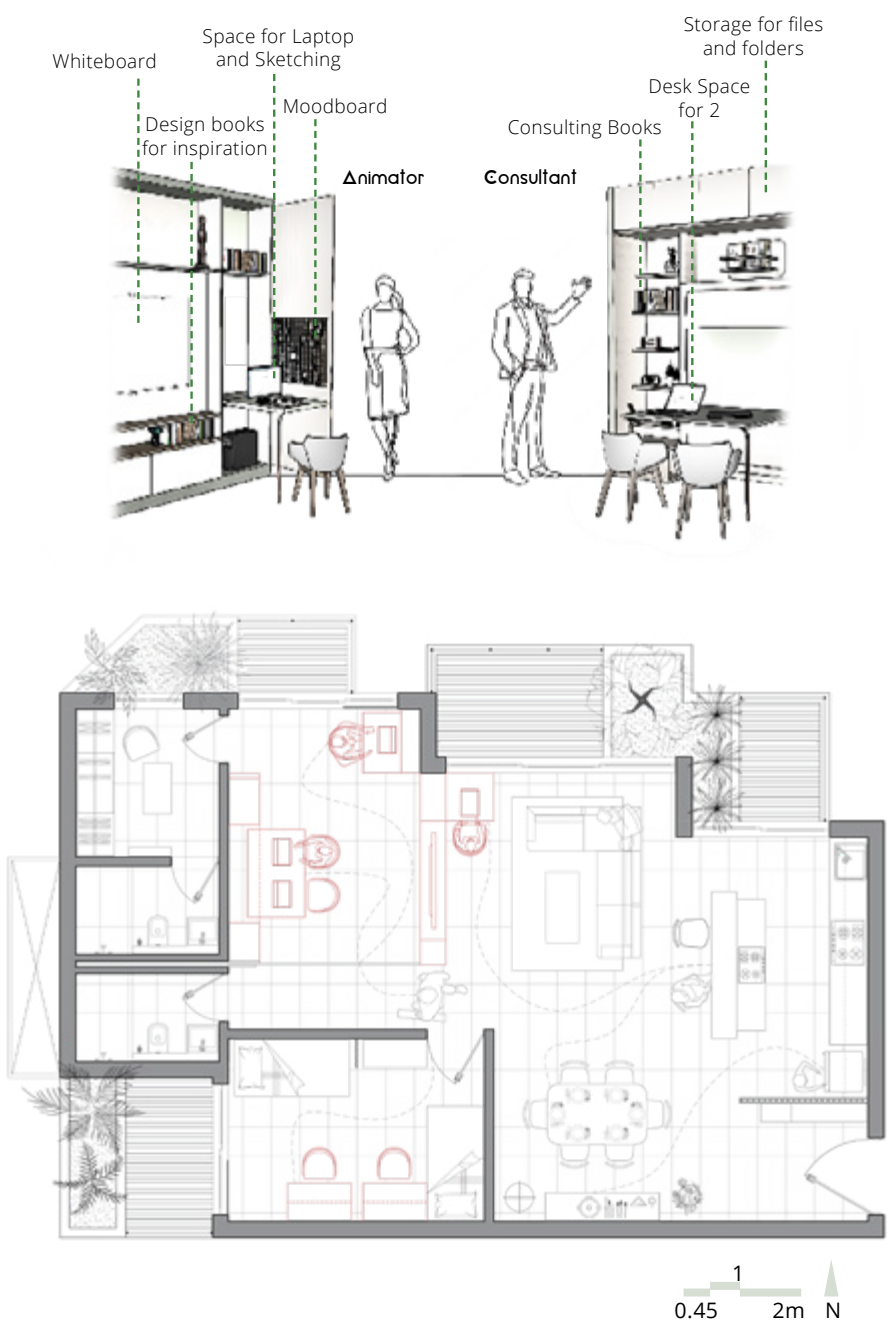


Balcony



Multifunctional

This arrangement reflects the flexible lifestyle of the users. Here a professional office setting with soundproofing is accomplished in bedroom area with use of sage, brown and ivory colour. A little cabinet hidden in the tv unit opens up to become another workstation, allowing other occupations to work as needed.



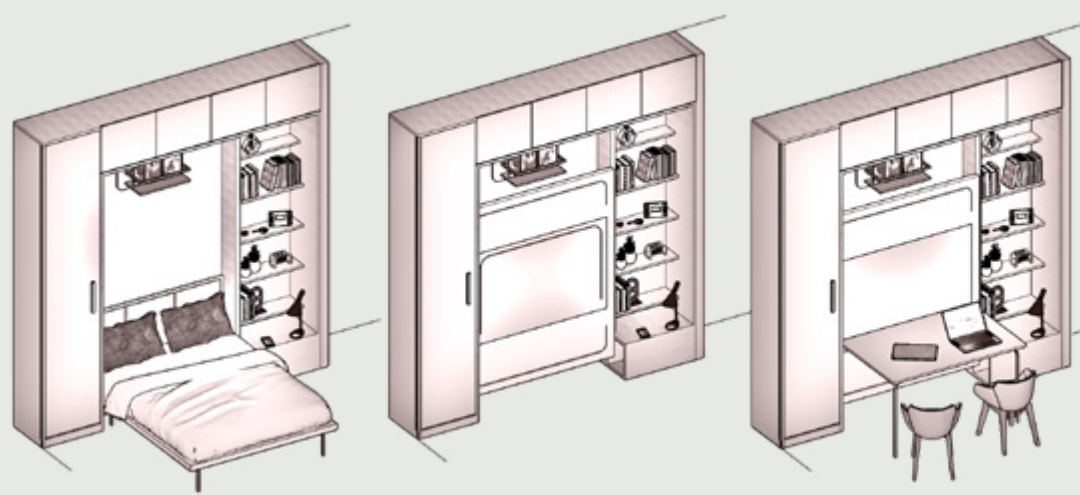
2bhk Unit plan - 10am - 5pm
During this period, kids attend online class or go to school, Guilia works in living room on alternate days and Roberto with his partner works in bedroom.



Axonometric

Guilia works in her living room, at her workstation in the TV unit, or on a bar stool or at the dining table. She enjoys moving around and listening to music because she is an animator. Robert works in the bedroom with his partner, and the soundproofing sliding wall keeps the place quiet.

Bed/Office table unit



Murphy bed folds up to reveal a deep green unit that folds out to form the table. The niche has a moodboard to keep track of activities



Murphy bed



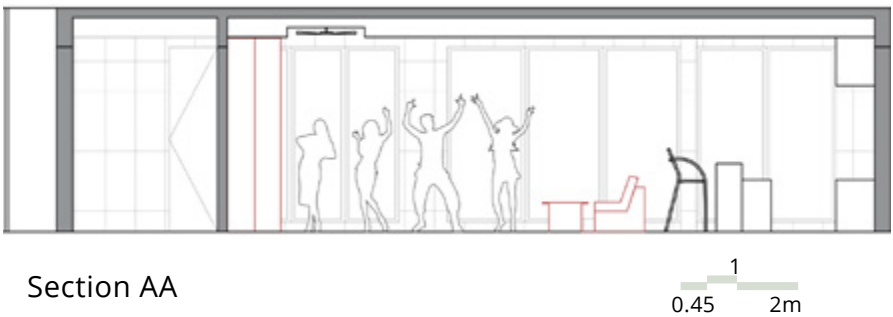
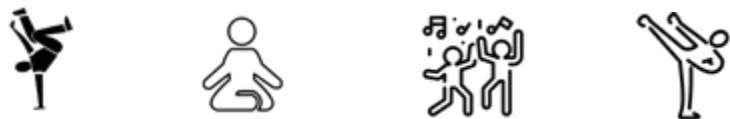
Roberto's workplace



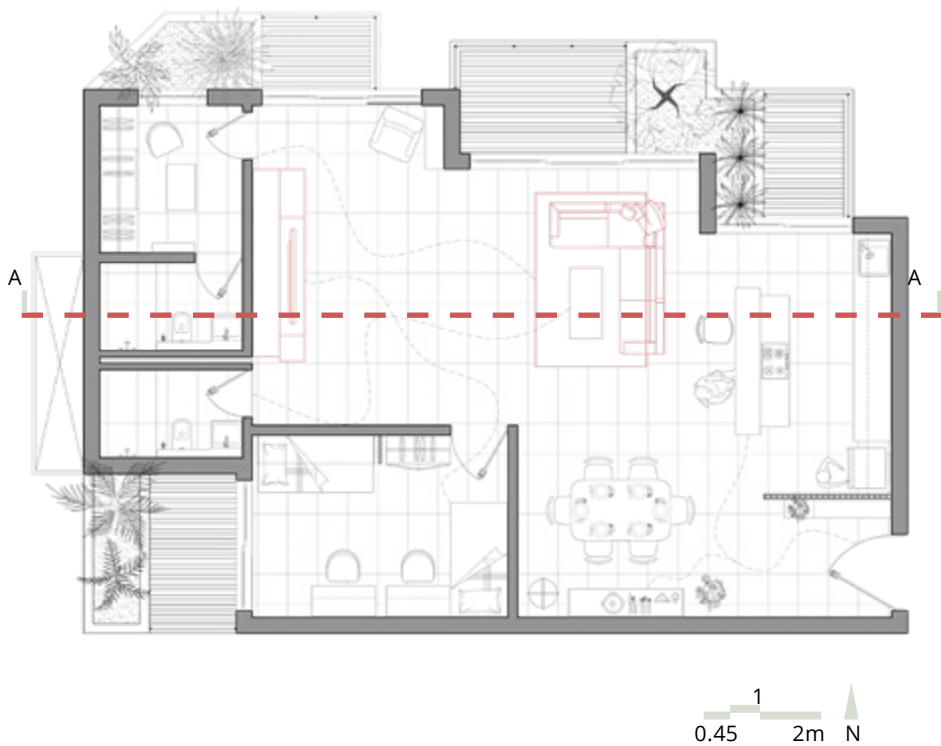
Living room workstation

Dyanamic - Recreation

There are two stages to a dyanamic arrangement. The first phase is recreation, in which the living area expands and provides plenty of space for physical activities that would normally take place outside, such as dance, yoga, and karate. It was transformed from formal to a large gathering space, which would aid in their mental and physical well-being.



Section AA



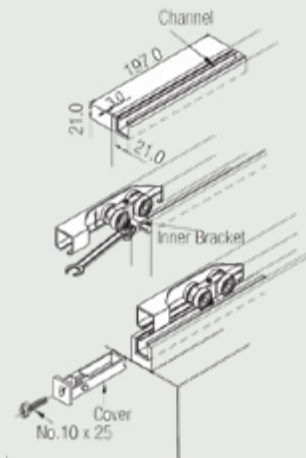
2bhk Unit plan - Evening time

Evening is the family time for Roberto, Guilia and her kids, they dance, they play, call others to join and have lots of fun in their big open space.

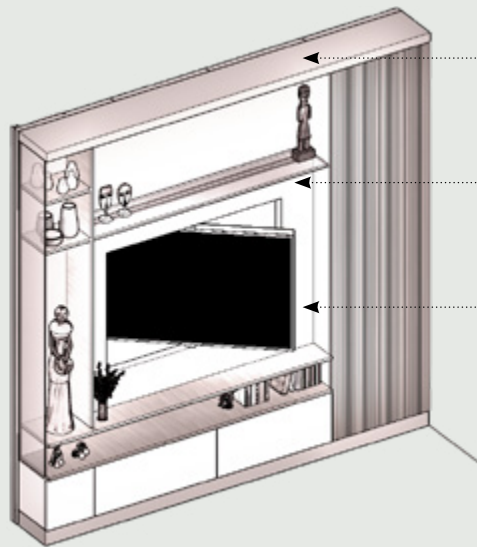


Δxonometric

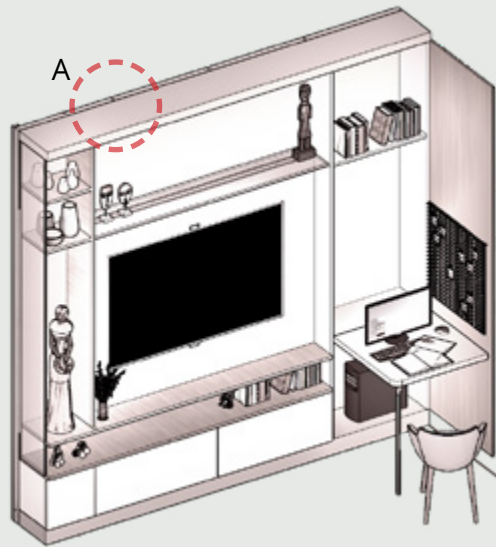
The mobile tv unit glides over rails hidden in the false ceiling to connect to the bedroom bed unit. As shown above, the sliding door to the bedroom glides into the recess in the toilet wall.



Detail at A



- Wheels on unit and rails in false ceiling.
- Display place
- Rotatable tv unit, makes office group conference calls easy from bedroom.



- Workstation opens ups to reveal a desktop and cpu space.
- Moodboard and space for design book for Guilia is designed.

Movable Tv Unit

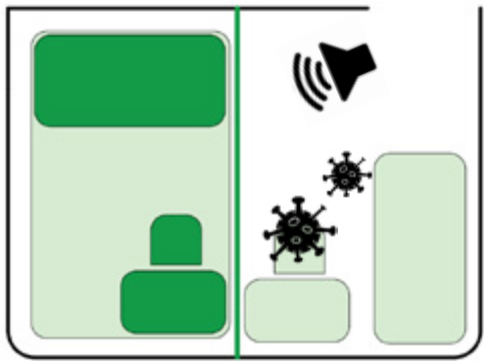
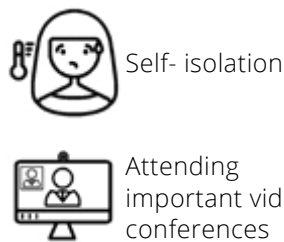
Transformation of living space



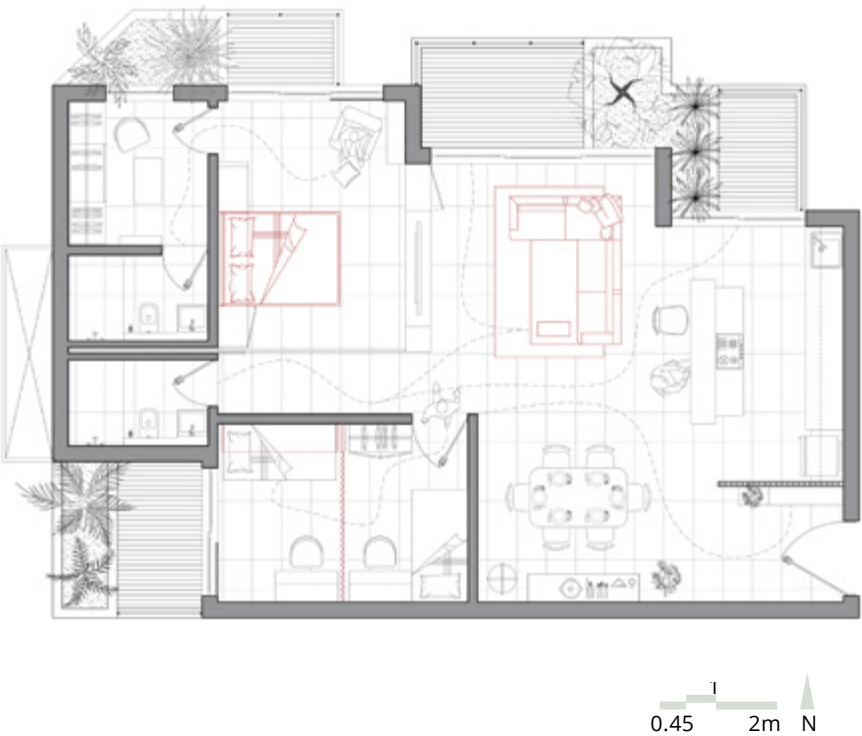
Dynamic - Isolation

The second arrangement in dynamic is isolation or privacy. By using a foldable partition wall, we separate the bedroom into two space. This wall is waeved using copper collagen and soundproofing felt so that the enclosed space can be used for isolation during infection or its soundproofing quality can be used while talking in meeting.

Space Usage:

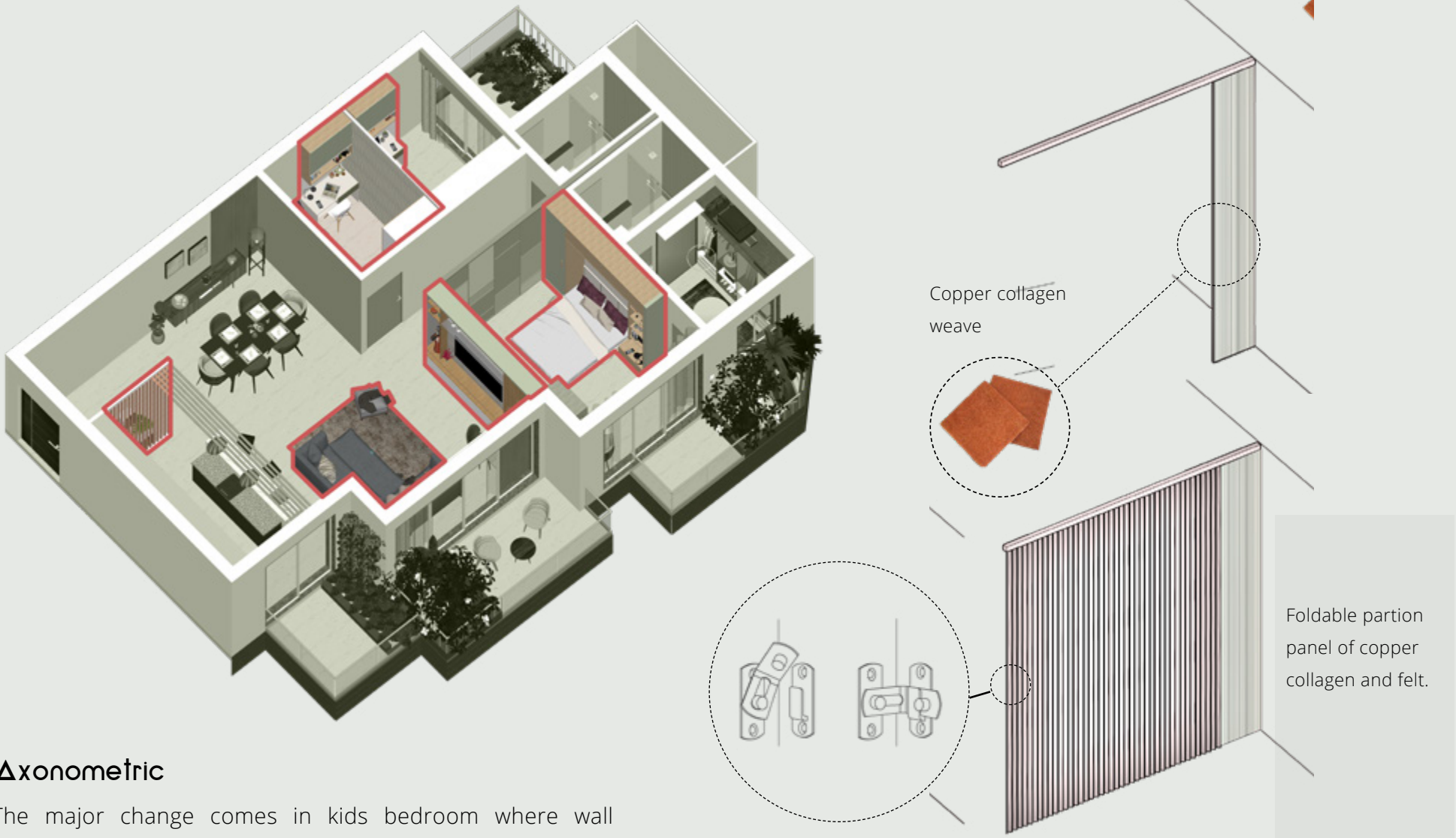


The Copper Foam partition is anti-microbial and provides acoustical barrier



2bhk Unit plan - Uncertain times

Kids bedroom is transformed into isolation cell and a sofa opens to form an extra bed.



Axonometric

The major change comes in kids bedroom where wall separates to make a isolation space. The bed open to form sofa cum bed in living area for emergency or guest.

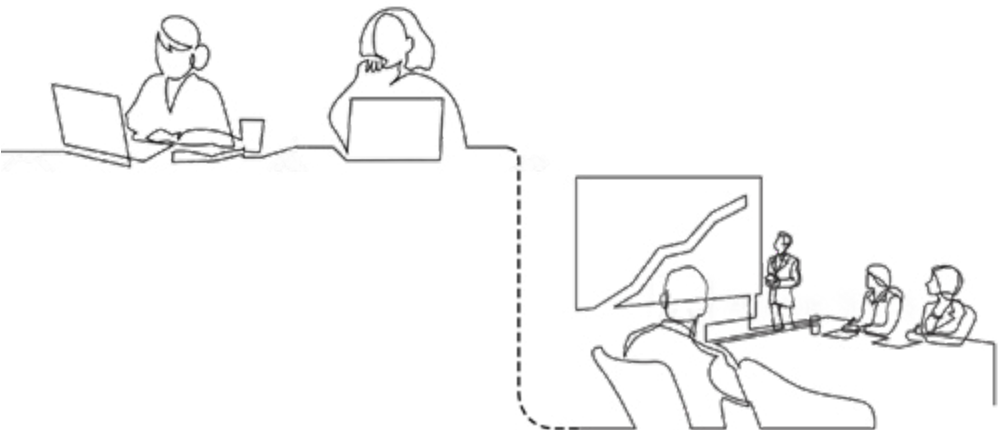
Transformation of kids bedroom



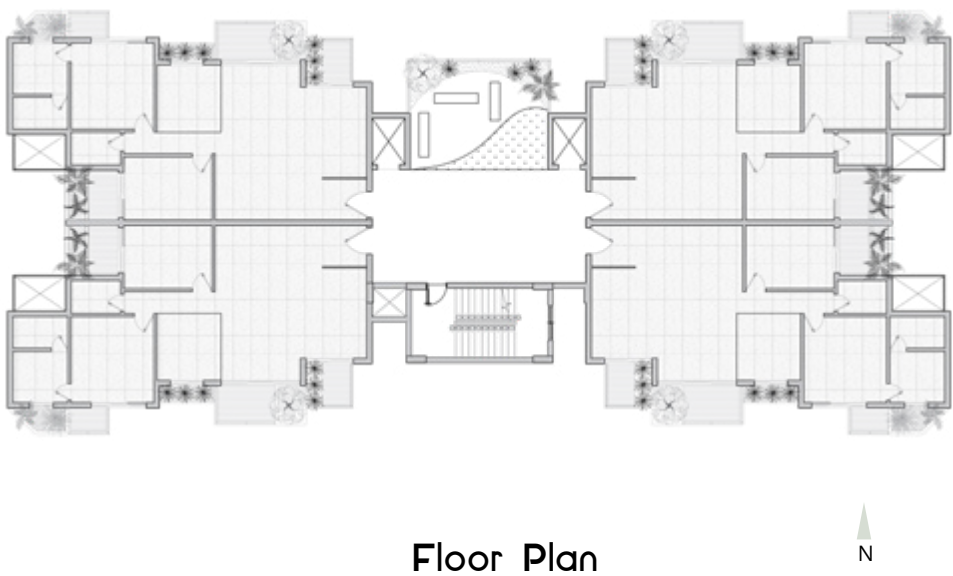
Foldable Antimicrobial partition

2.5bhk

In some years, Kids have grown up and want extra space for their books and study place. One is preparing for impending admission examinations. As a result, they relocate to a 2.5Bhk apartment in the same community. The furnishings from their 2bhk units can be utilised here because the units are based on a prototype design.

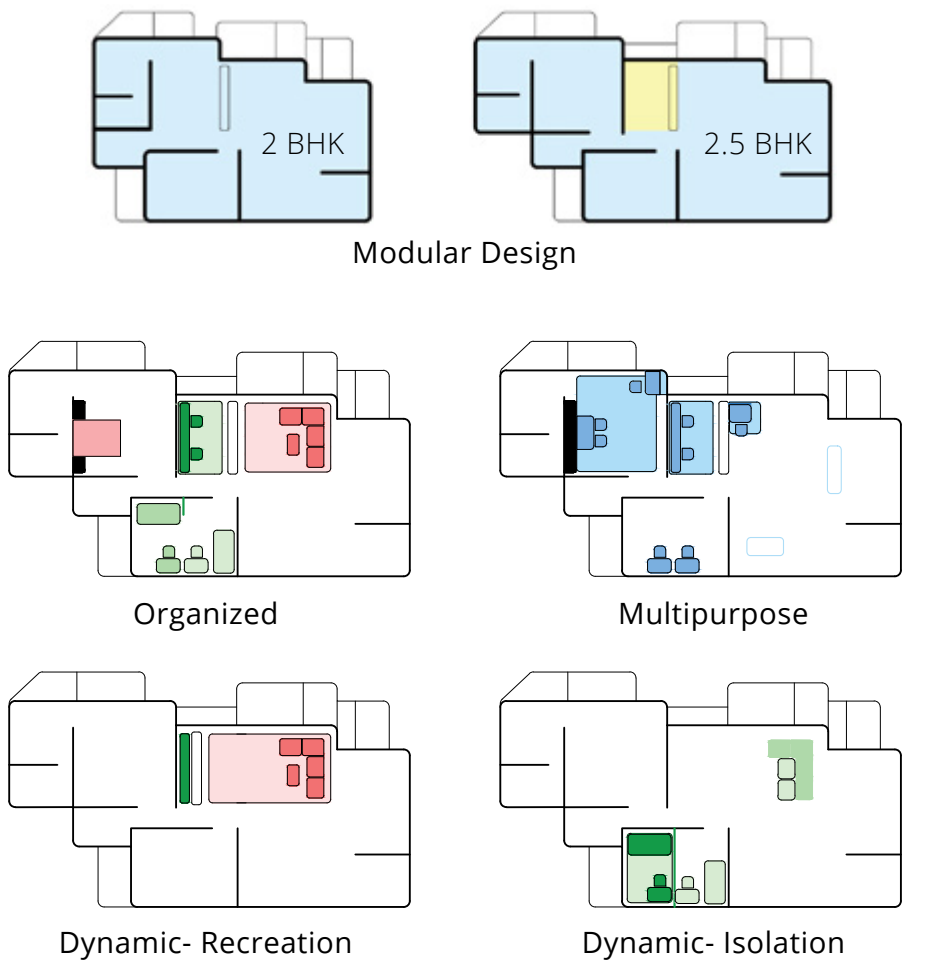


2.5 Bhk has an added study area near living room which functions as a big space during recreation arrangement.



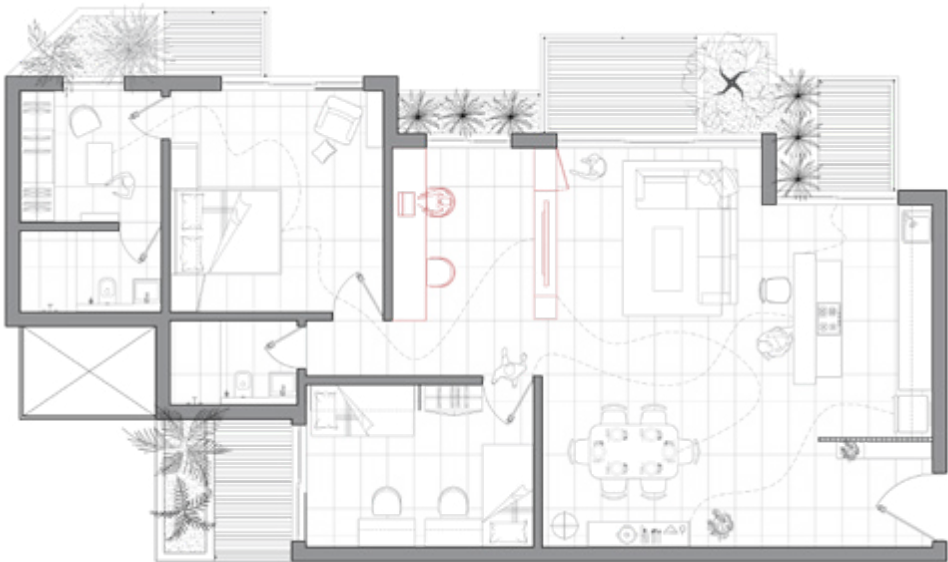
Floor Plan

Floor plan has community space on alternate floors . Each unit is of the size 140sq.m including balconies



Modular Design

The design becomes like a prototye where organized, multipurpose and recreation arrangement can be repeated over bigger unit plans as well.



2.5 BHK Unit Plan



Axonometric View

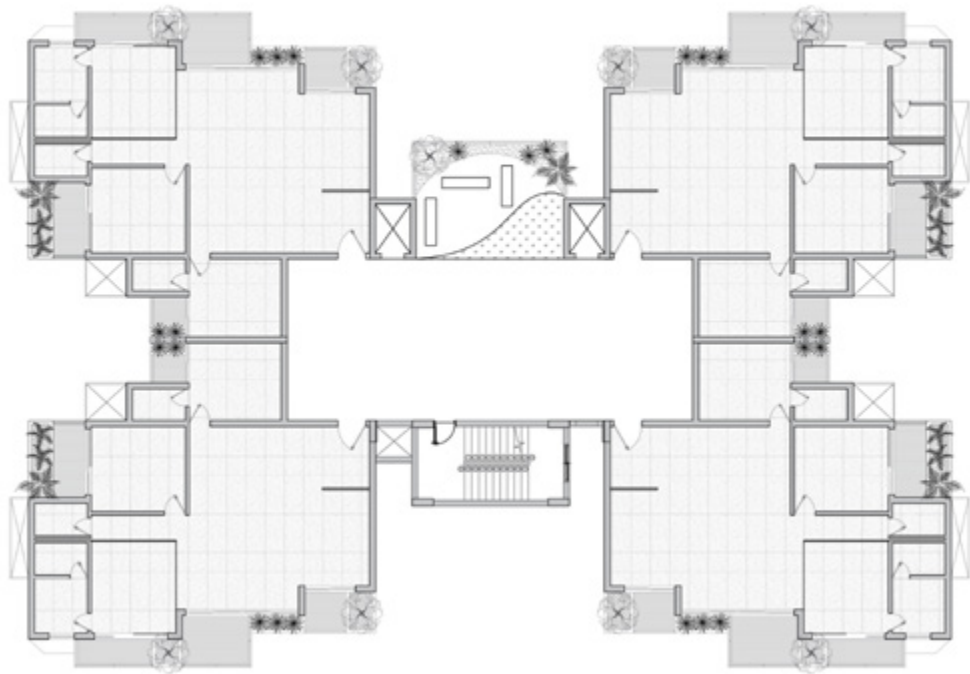


3bhk

Soon after, their lonely ailing grandpa, who had been living alone in the hamlet, decided to sell all of his land and move in with them. As a result, they decide to move into a three-bedroom apartment to help him.

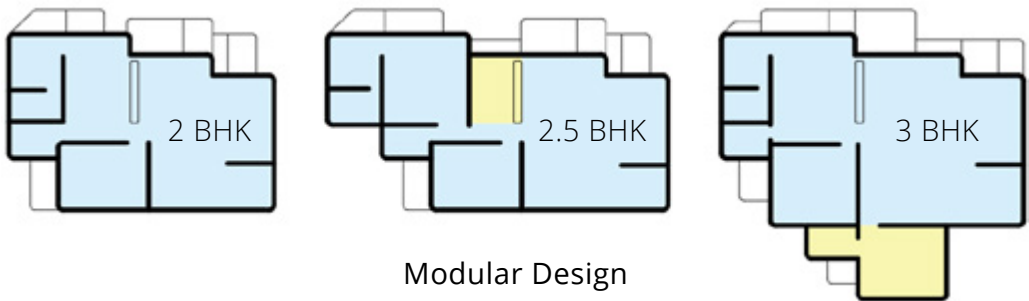


Because it is a prototype design, much of the furnishings and the moveable unit can be used. The senior citizen's room has been added near the door to make it easier for him to access. The toilet features hold bars to assist him in moving around.

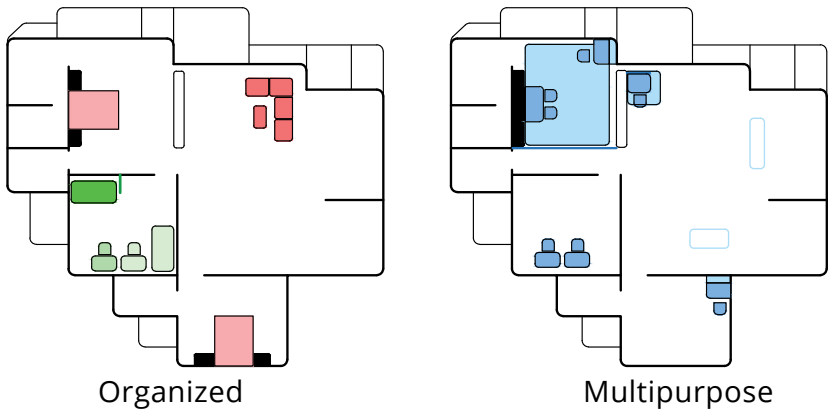


Floor Plan

Floor plan has community space on alternate floors . Each unit is of the size 180sq.m including balconies. Multiple balconies help facilitate ecological landscape needs for the design.

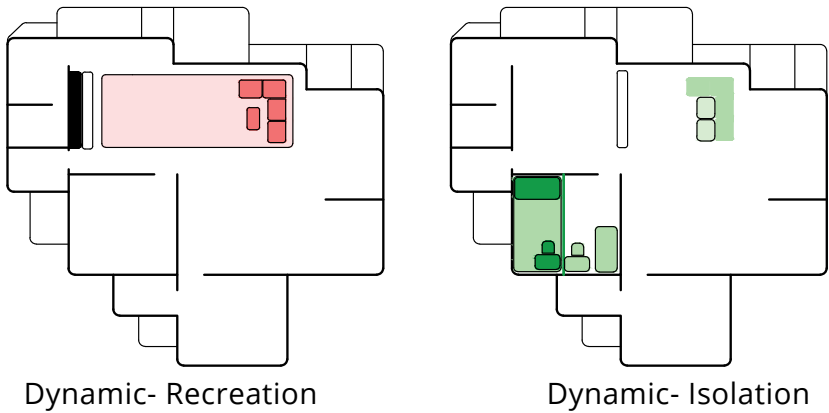


Modular Design



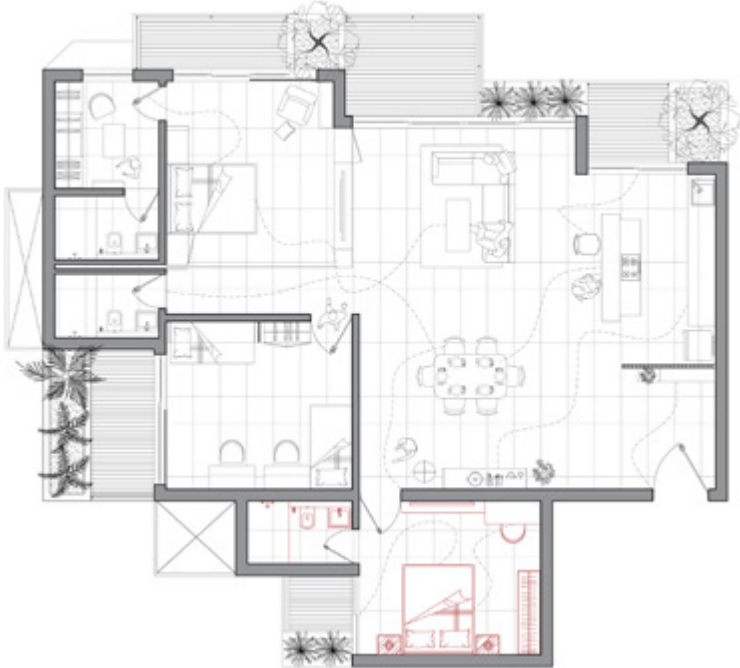
Organized

Multipurpose

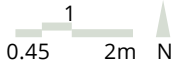


Dynamic- Recreation

Dynamic- Isolation



2.5 BHK Unit Plan



Axonometric View

