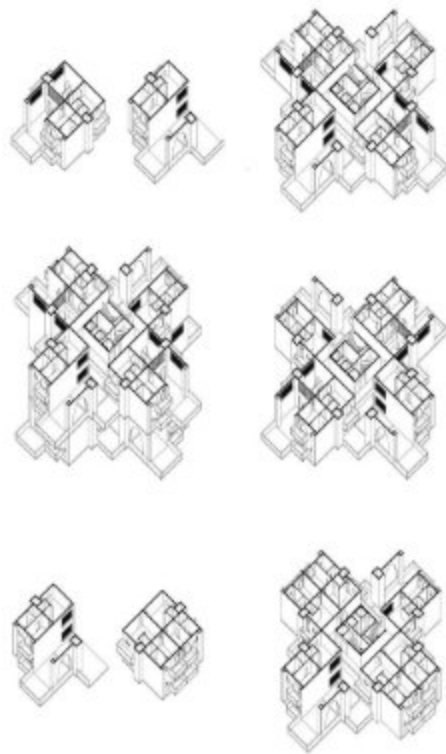


Hybrid Habitats

(RE-INTERPRETING SOCIAL HOUSING IN CHANDIGARH)





community



housing



sustainability



interactions



garden



rain water harvesting

Neighbourhood Planning / Social Housing / Hybrid Habitat

India's exceptional economic growth has sparked an urban boom which will affect global architecture and urbanism. With current circumstances it is required to shape our current cities in better shape. Providing social interactions in vertical housing can be observed from their public access, hybridization and periscopes. With open spaces, people can interact with each other without restrictions.



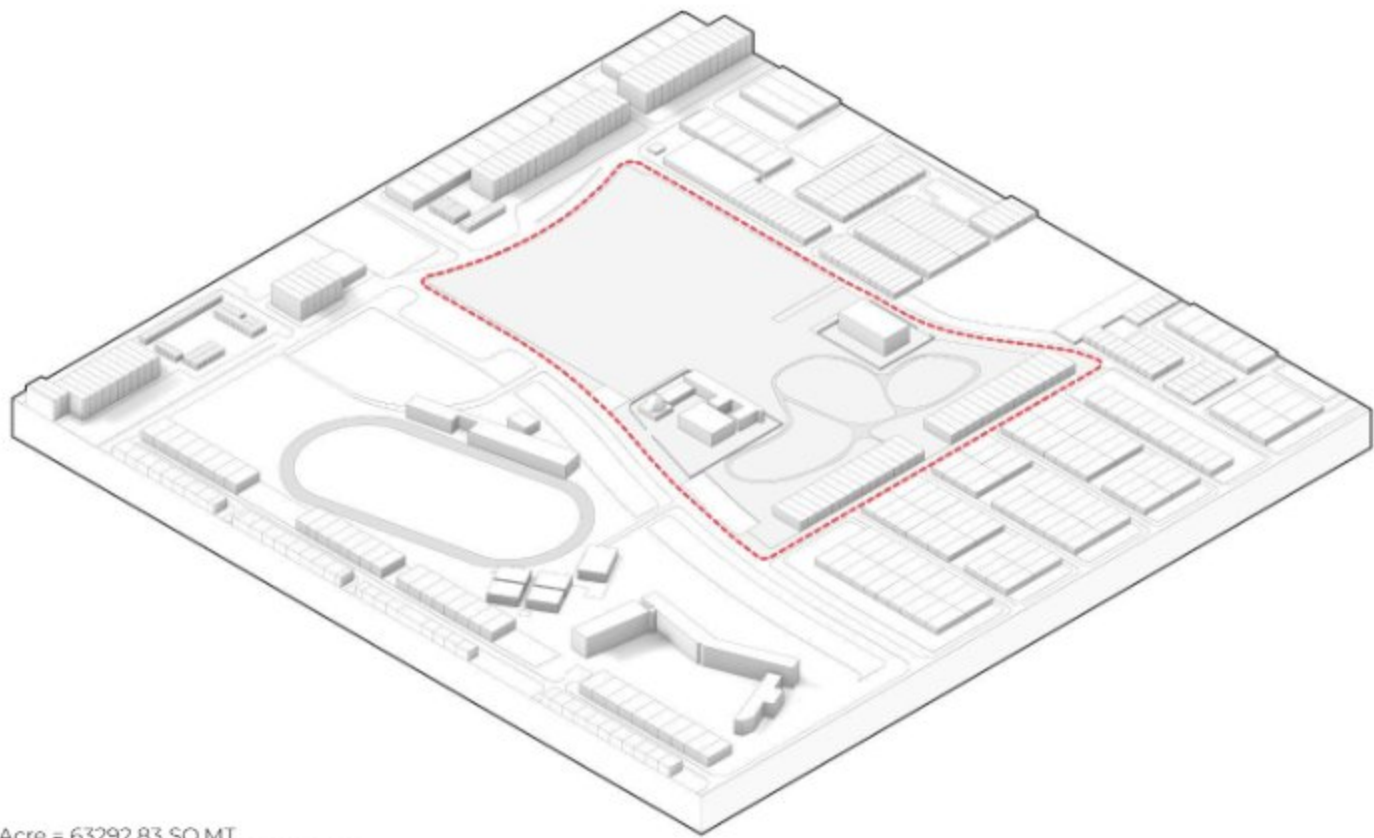
Map Of INDIA



Master Plan Of Chandigarh



Master Plan Of Sector 7, Chandigarh

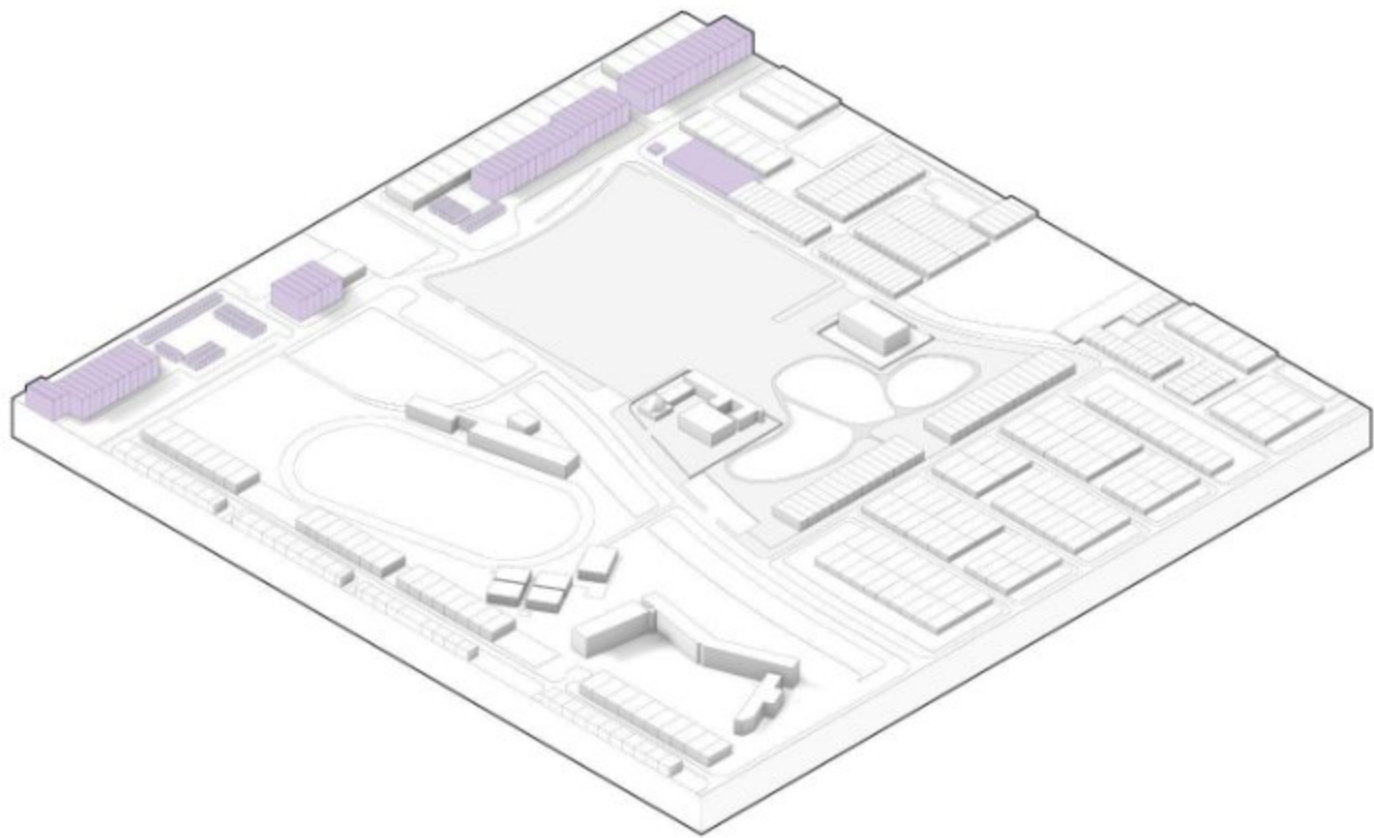


Site

TOTAL SITE AREA = 15.64 Acre = 63292.83 SQ.MT.
PERMISSIBLE GROUND COVERAGE = 40% = 25317.13 SQ.MT.
PERMISSIBLE F.A.R.= 1.75 = 110762.45 SQ.MT



Context



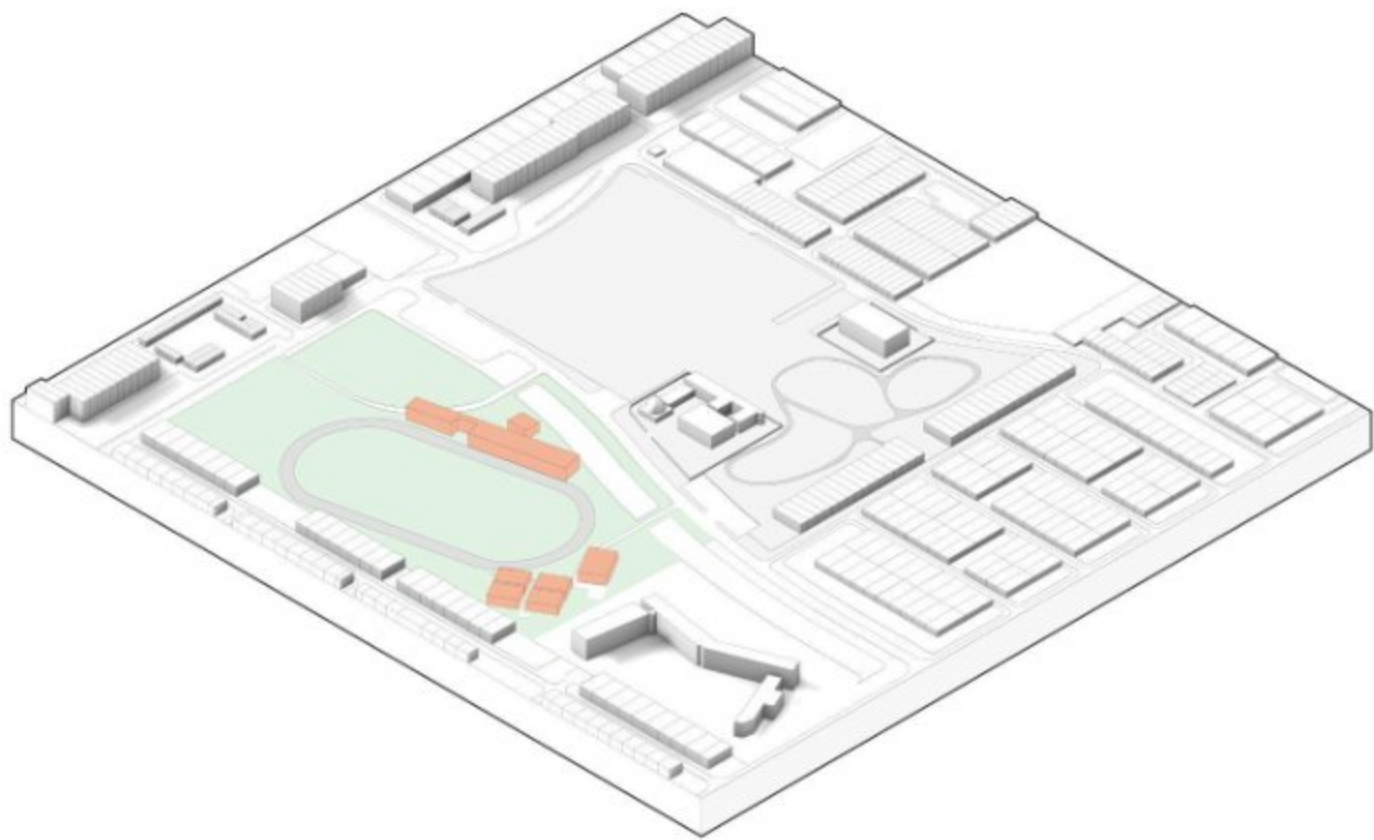
Shops cum Flats





Shops cum Flats

Context

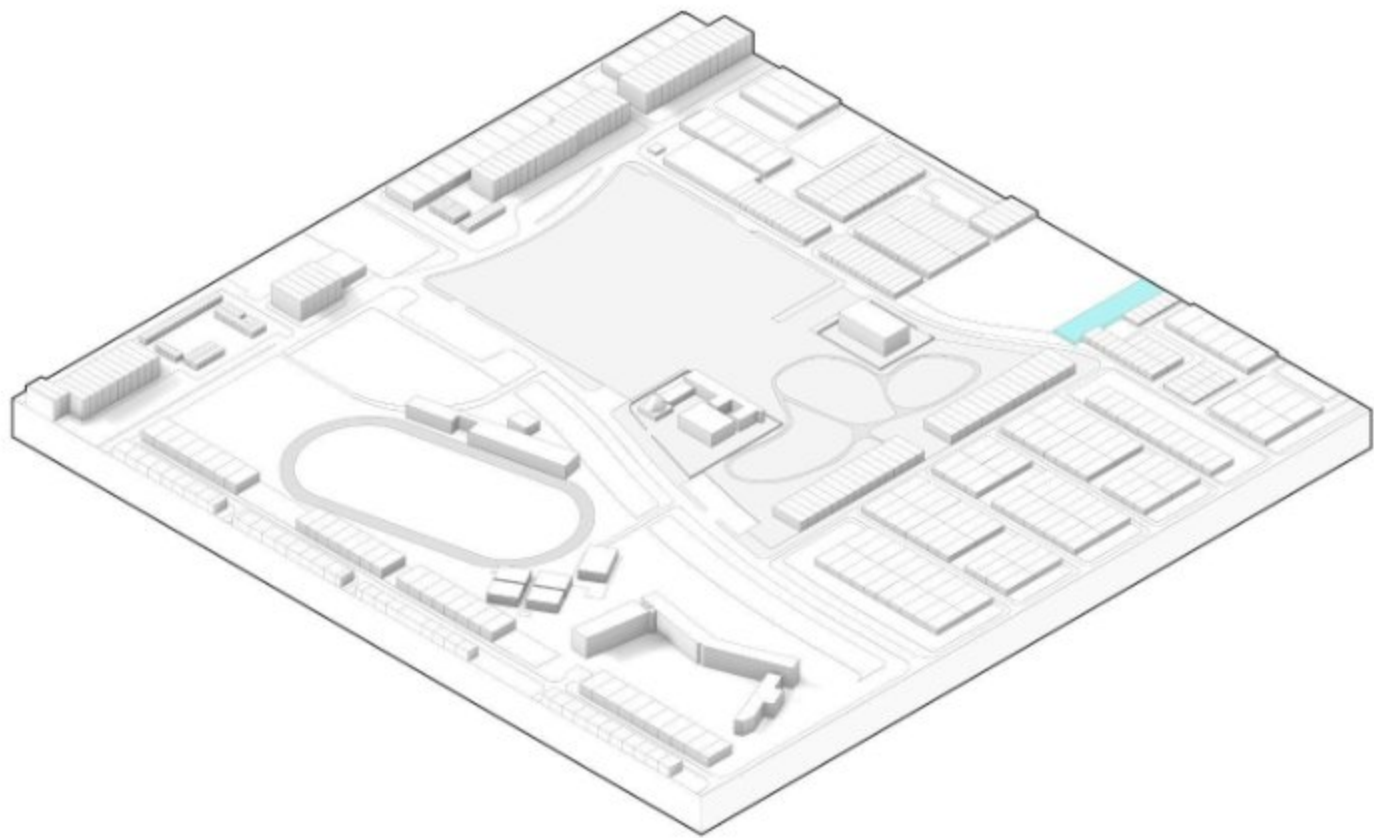


Athletic Club



Athletic Club

Context



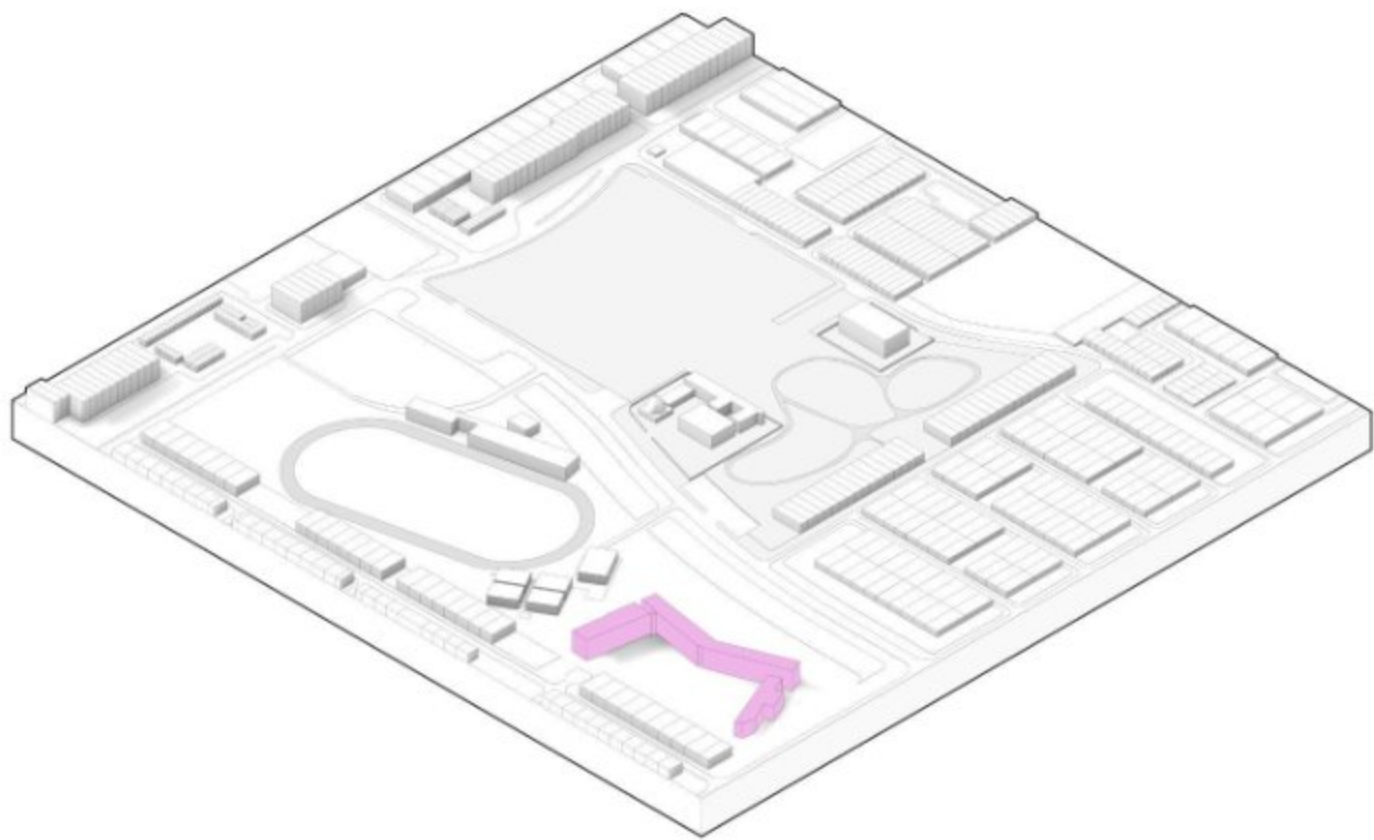
Dhobhi Ghat





Dhobhi Ghat

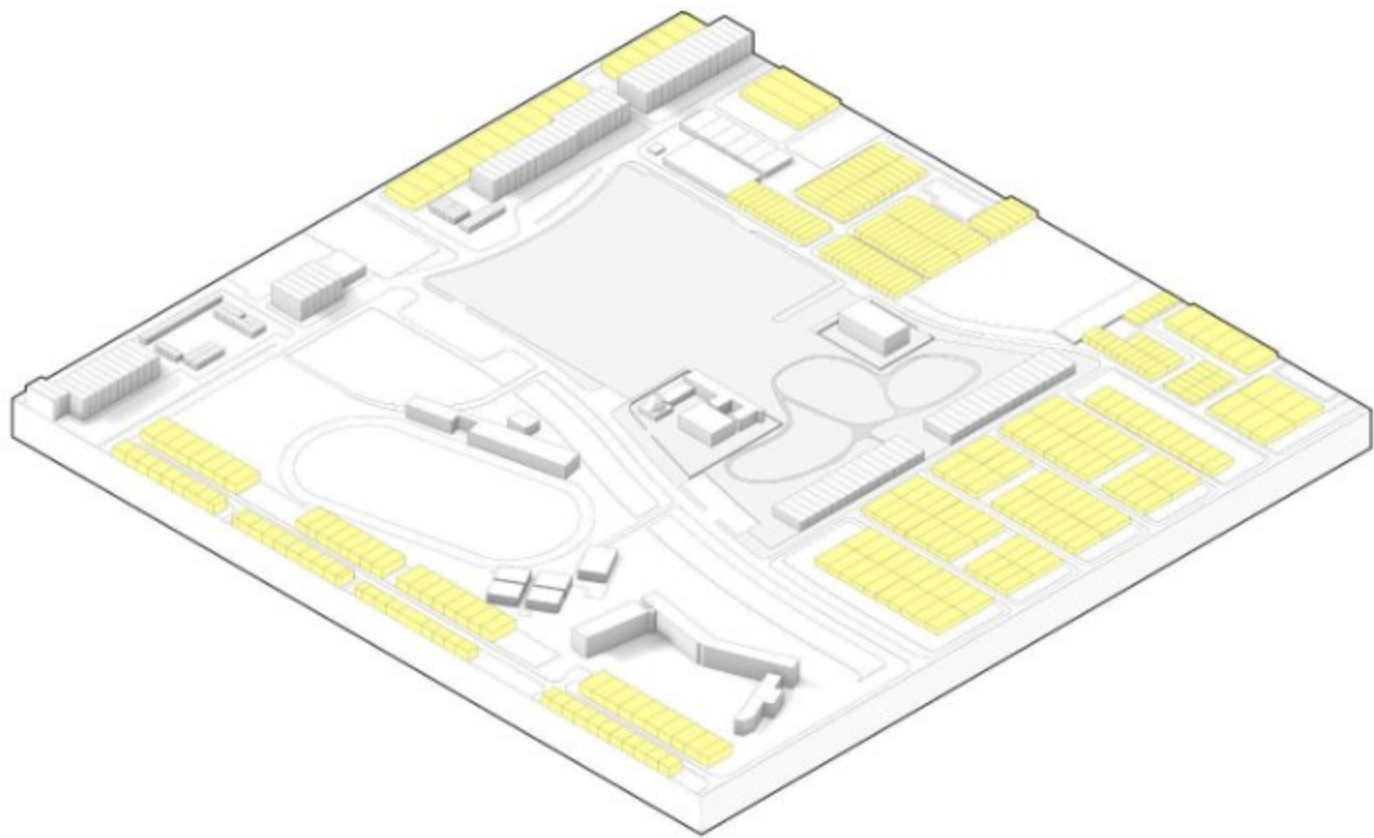
Context



Kailash Behel DAV Central Public School



Context



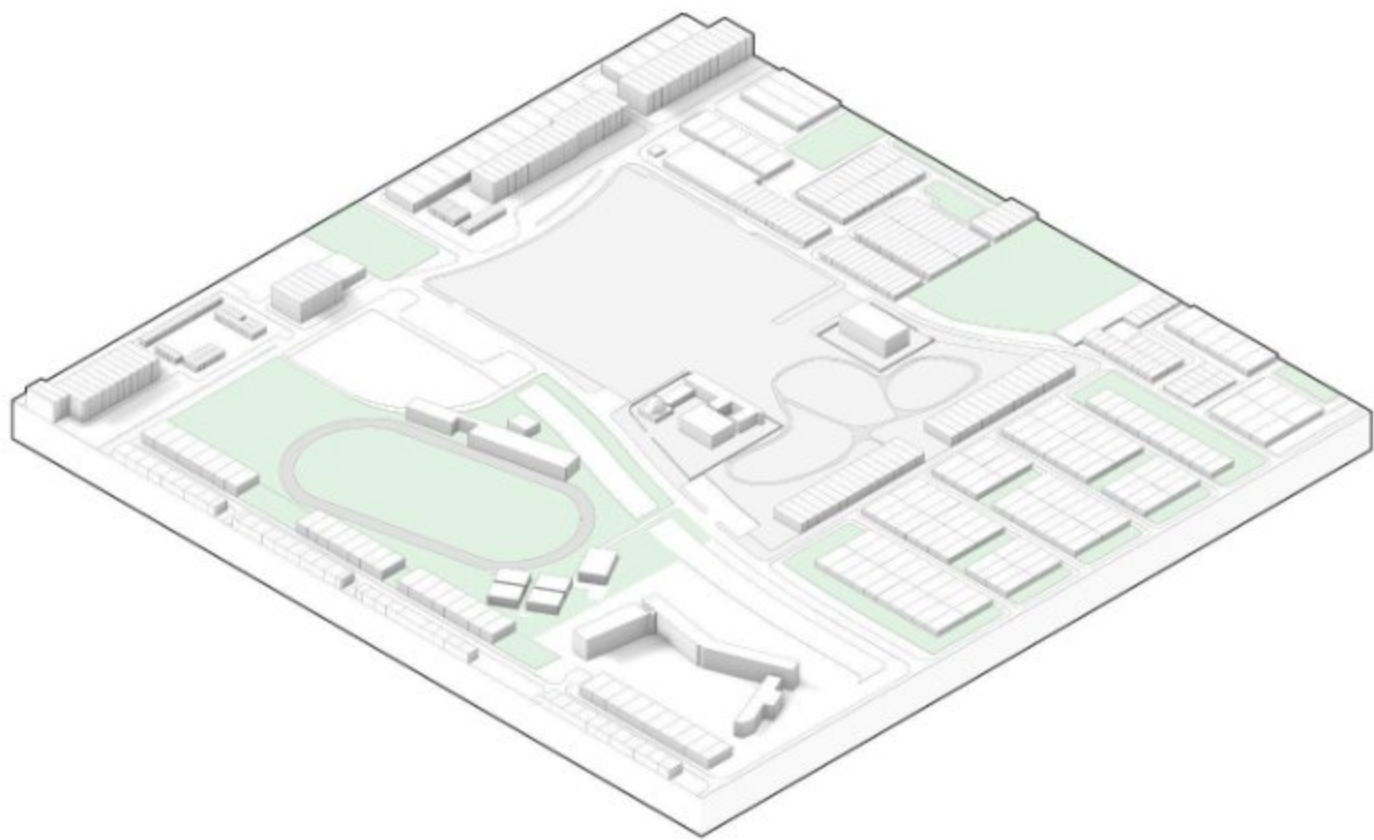
Residential Housing





Residential Housing

Context



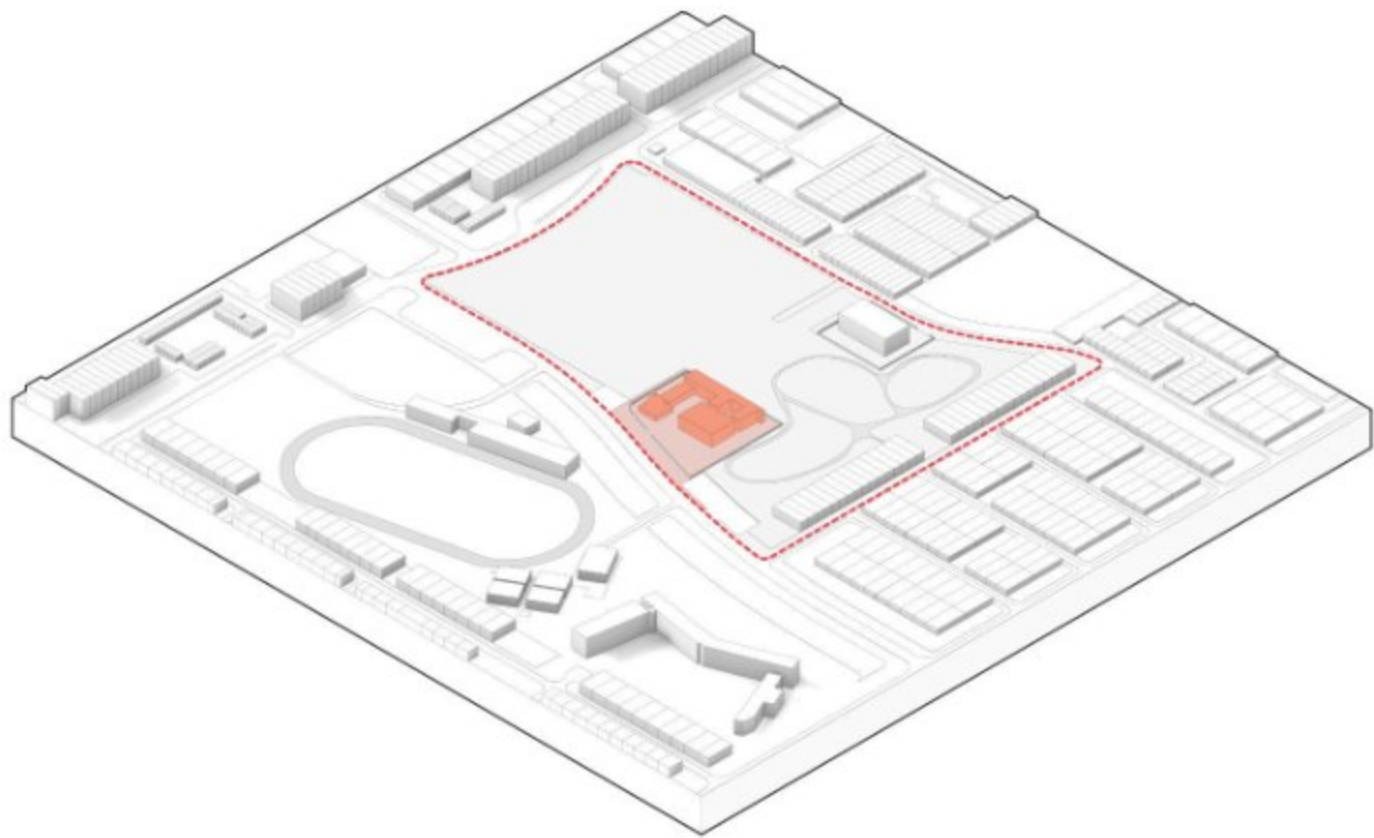
Green area surrounding our Site





Green area surrounding our Site

Context

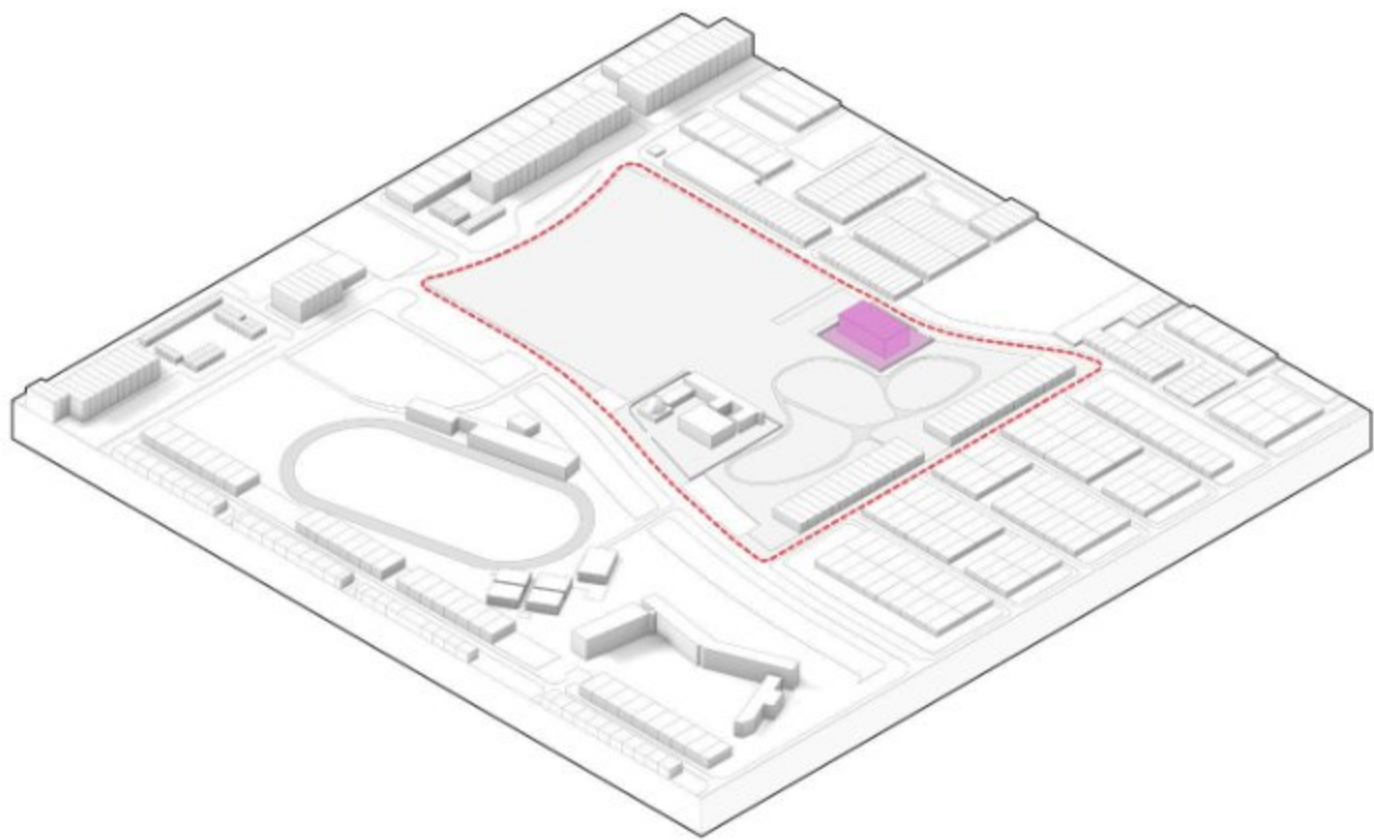


Arya Samaj Mandir and Community Hall



Arya Samaj Mandir and Community Hall

Context



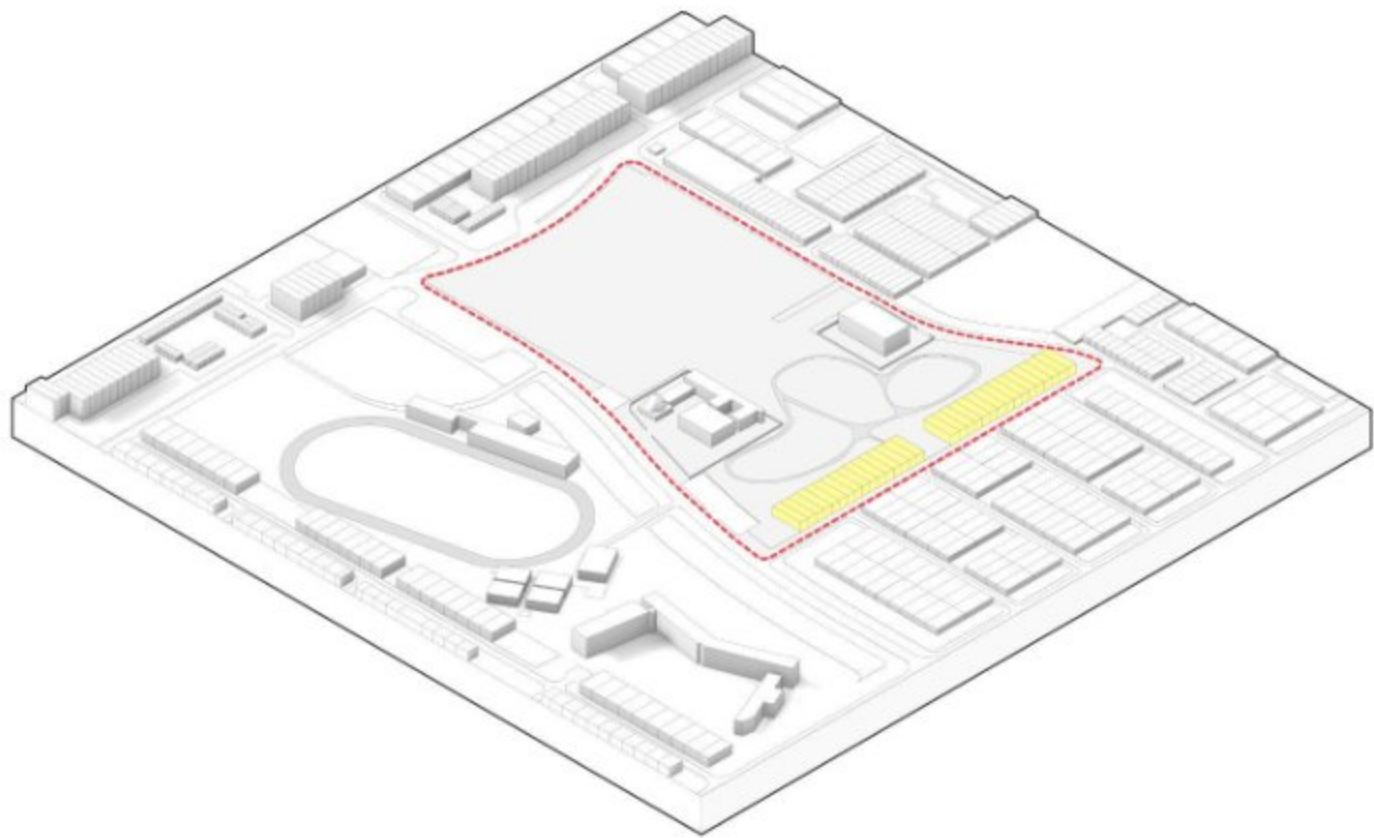
CRB Public School





CRB Public School

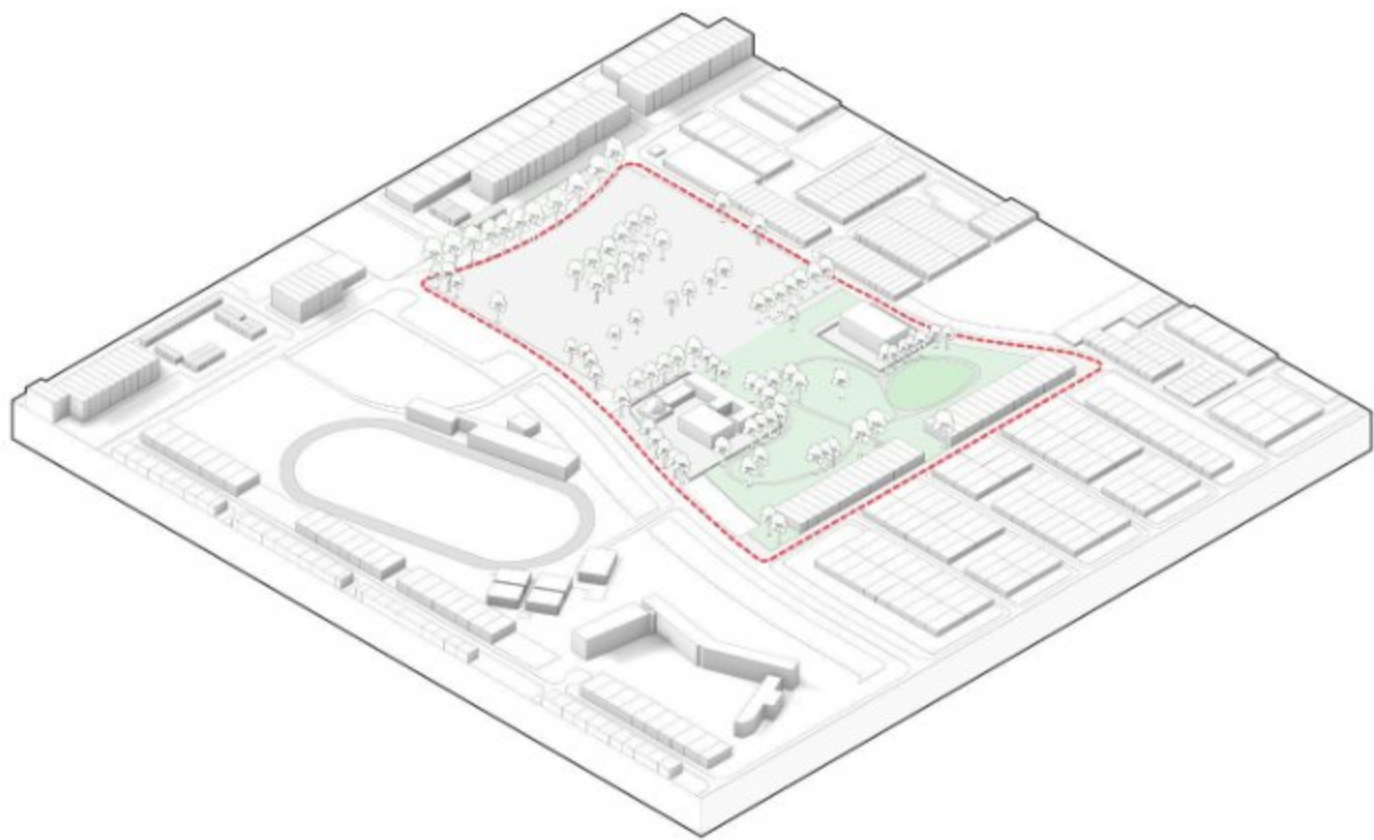
Context



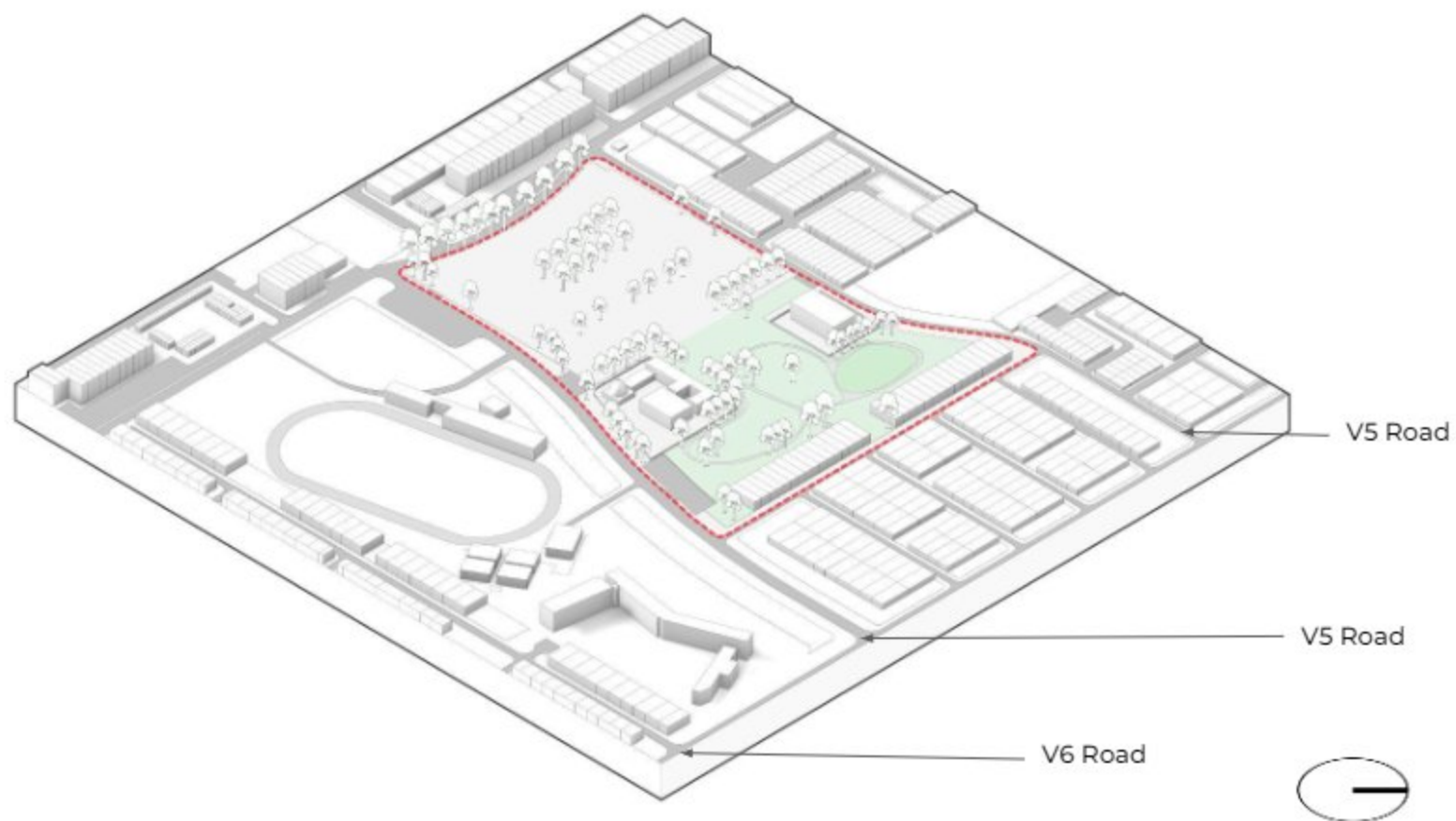
Residential Housing (Type: J-13)



Residential Housing (Type: J-13)



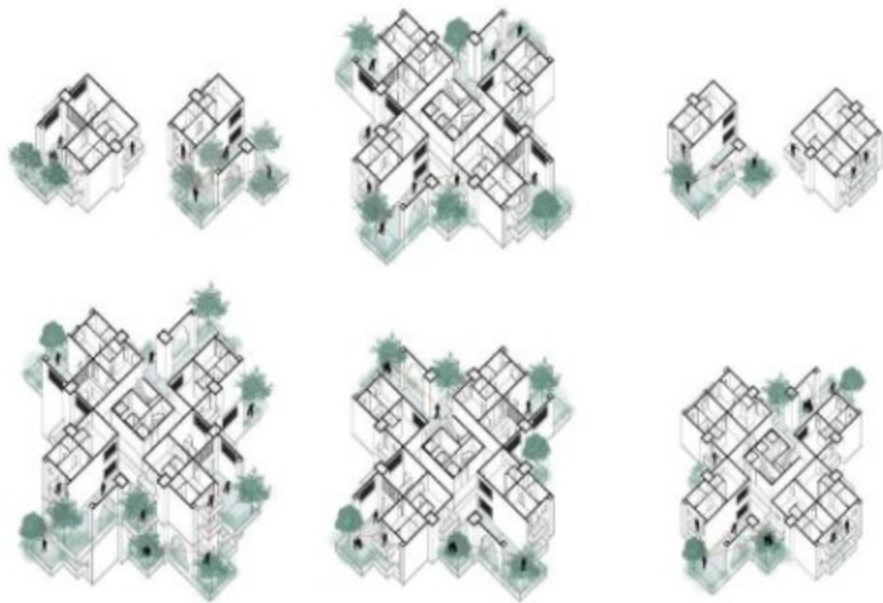
Existing Landscape on the Site

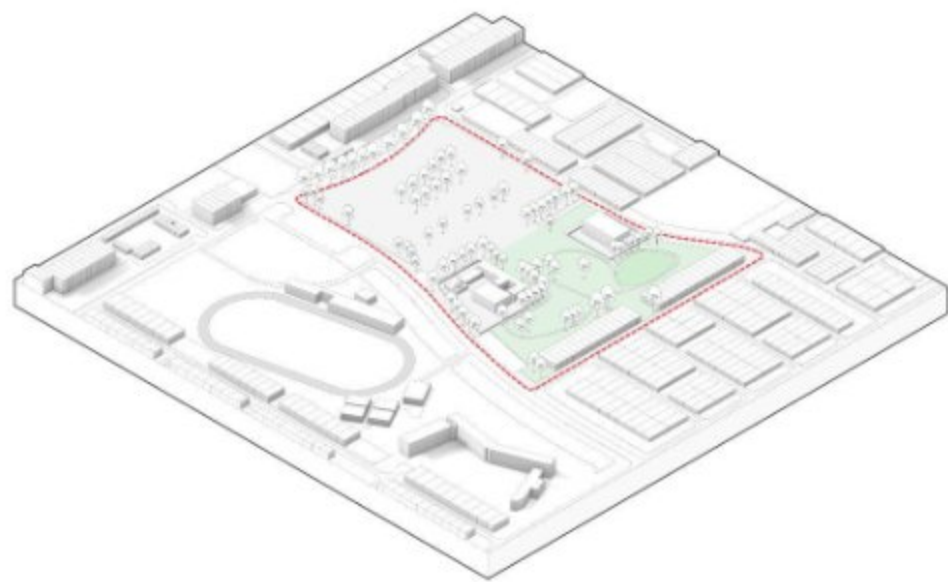


Vehicular Circulation

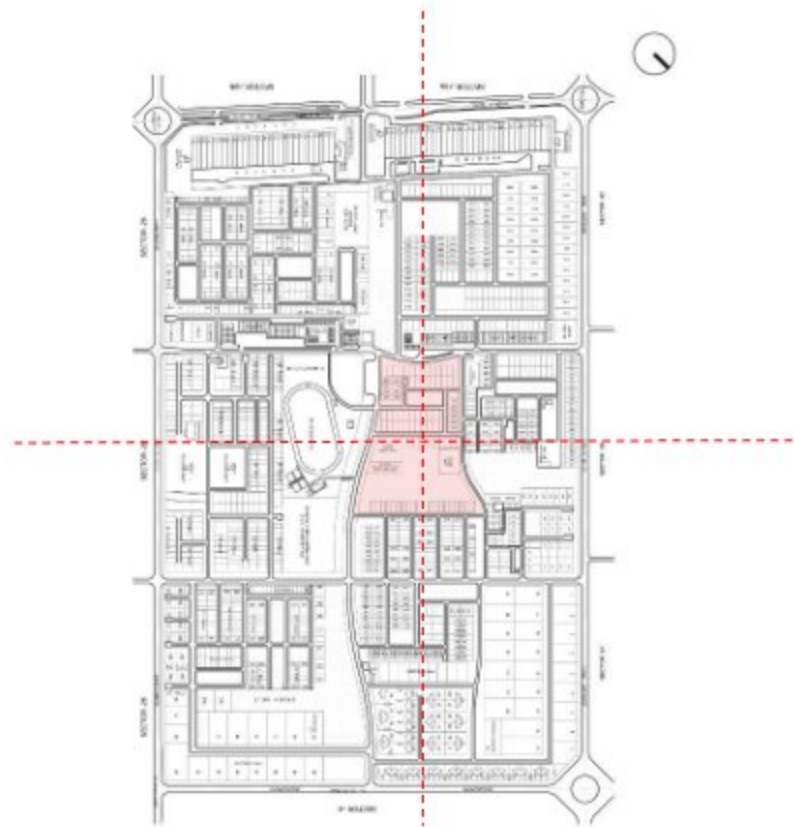
CONCEPT

Social interactions in the vertical housing can be observed from their public access, programs, hybridization, and periscopes. Public spaces that can accommodate social interactions become the solution to maintain the social quality. With open spaces, people can interact with each other without certain restrictions. This quality is often lost in vertical housings. These public space programs can be used by the residents to build social interaction to avoid individualism and achieve common goals such as welfare, social closeness, and collective security. This will also help in providing vibrant healthy environment for the residents, during varying states of normalcy and confinement.



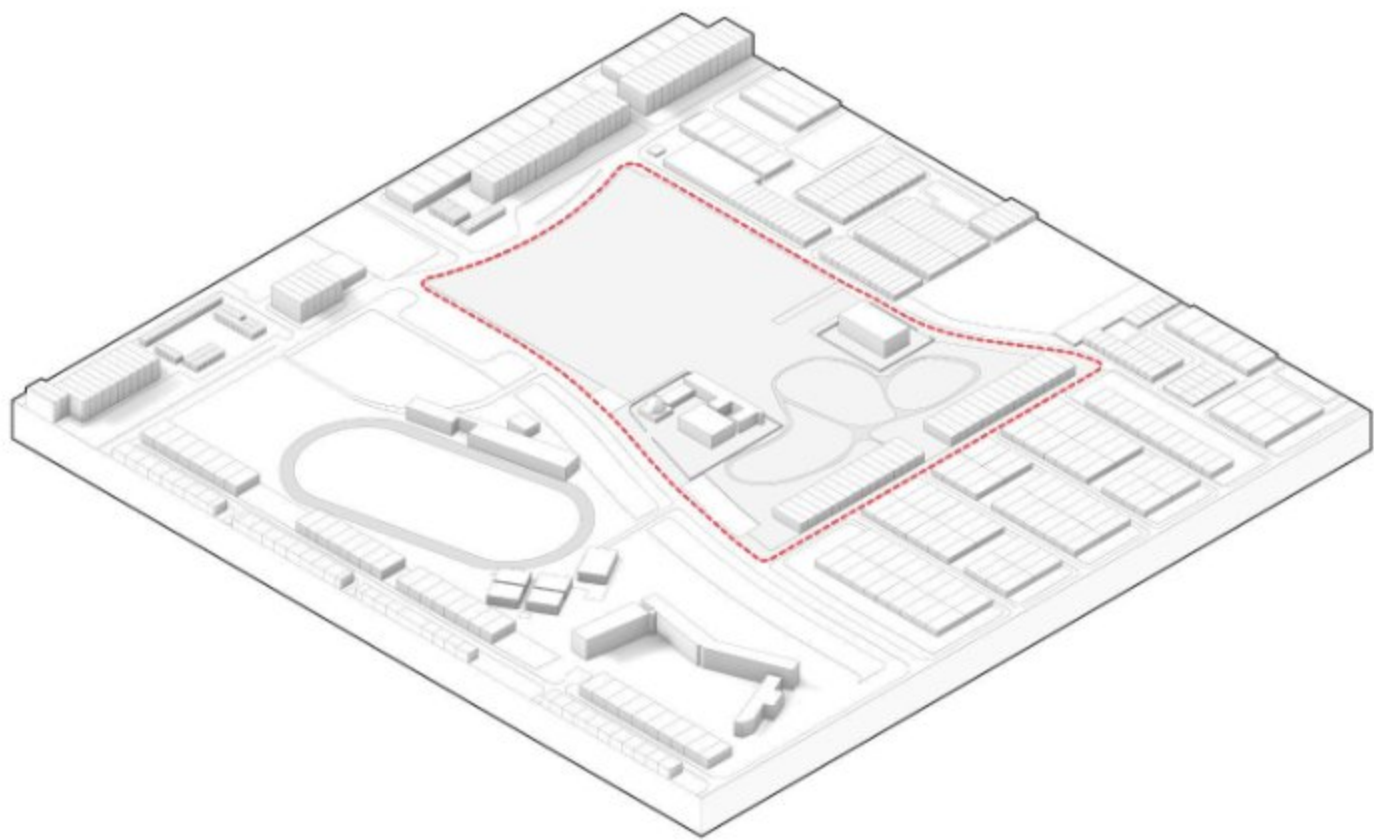


Isometric Diagram of Site

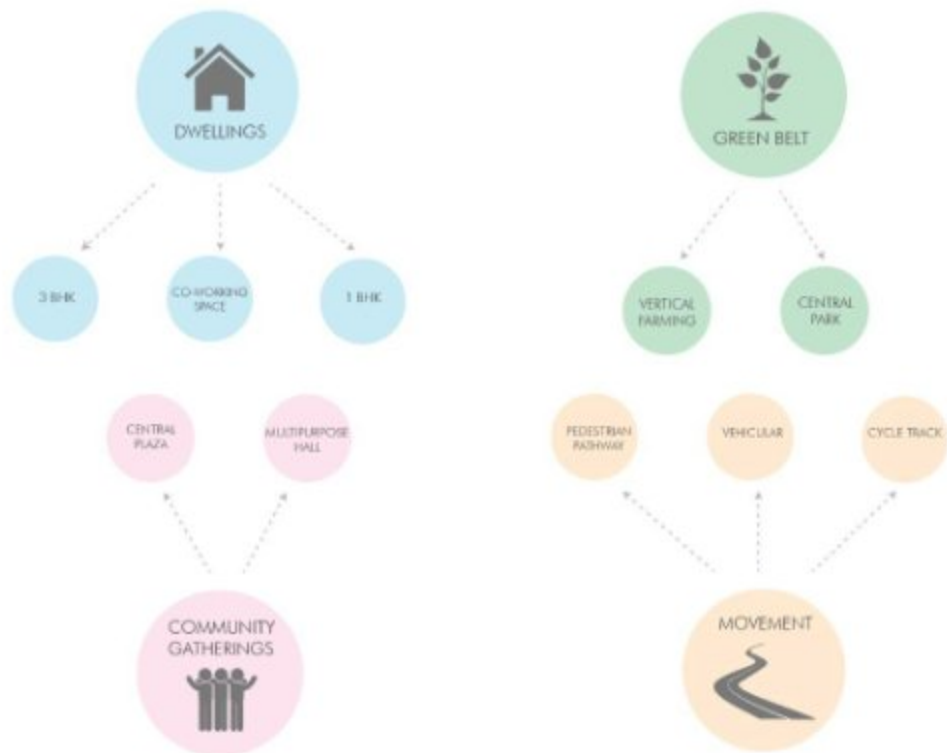


Master Plan Of Sector 7, Chandigarh

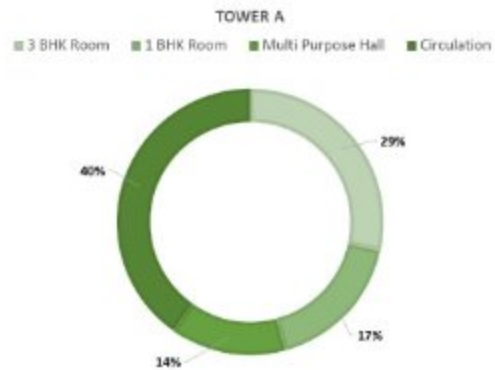
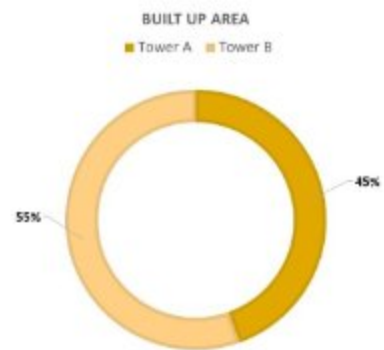
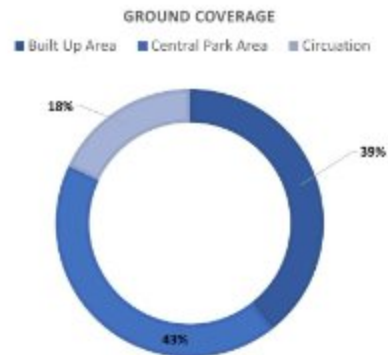
The Central Park acts like the respiratory system of the whole sector hence it is conserved.



Site

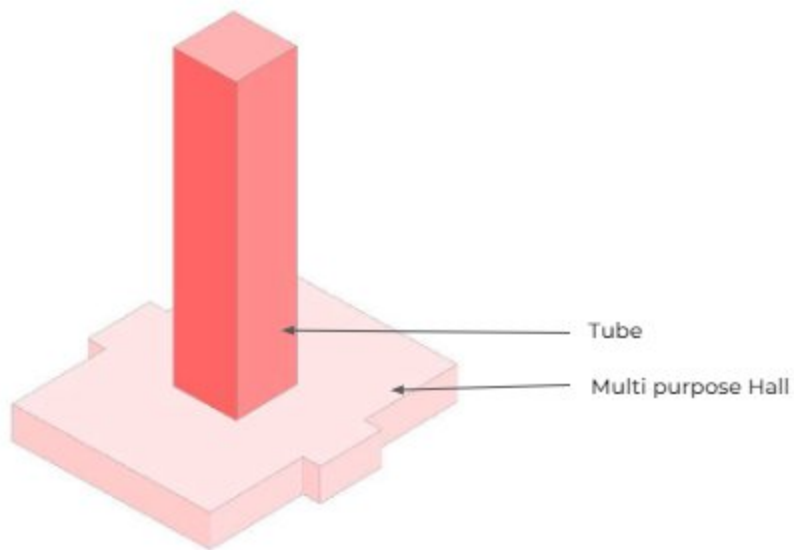


Program Formulation



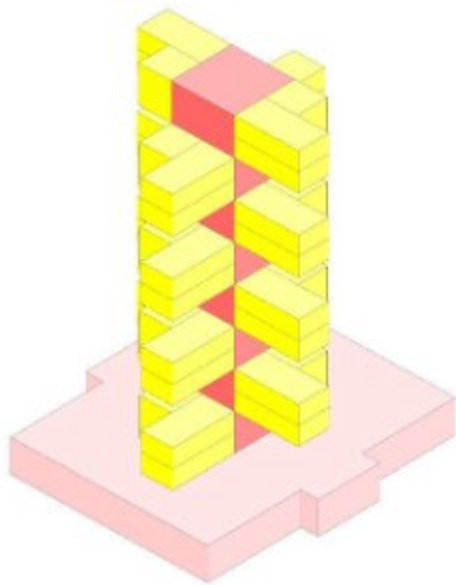
Program Formulation

Conceptual Development unit of Hybrid Tower



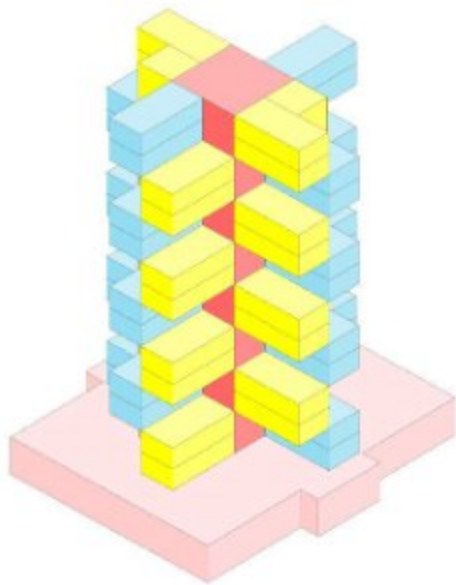
The tube structure around which dwellings are arranged allows for interactions and diverse activities to occur, resulting in hybrid housing in vertical manner.

Conceptual Development unit of Hybrid Tower



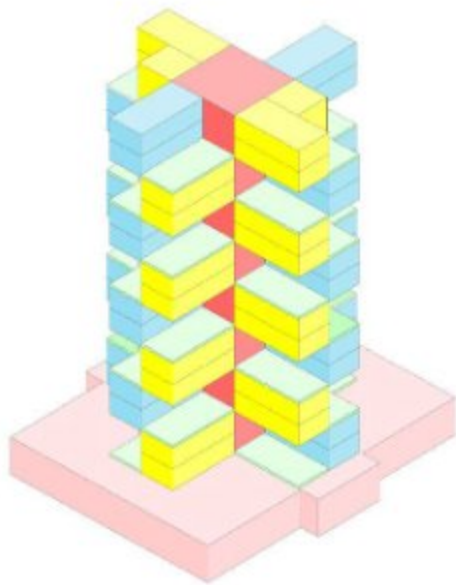
The 3 BHK houses will be arranged around the tube for enhanced social connections between the various floors and residents.

Conceptual Development unit of Hybrid Tower



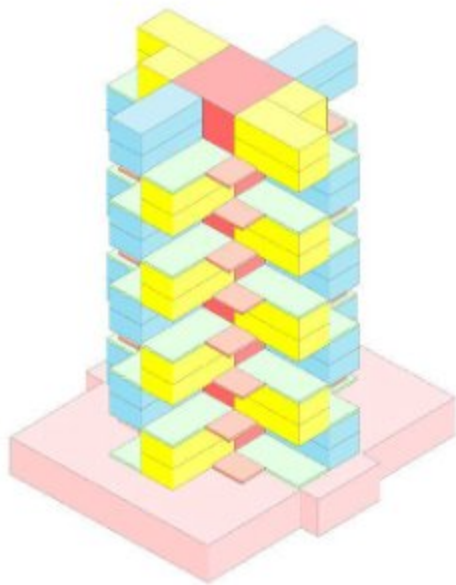
Stacking the one-bedroom units for improved social interaction and to reduce individualism between levels.

Conceptual Development unit of Hybrid Tower



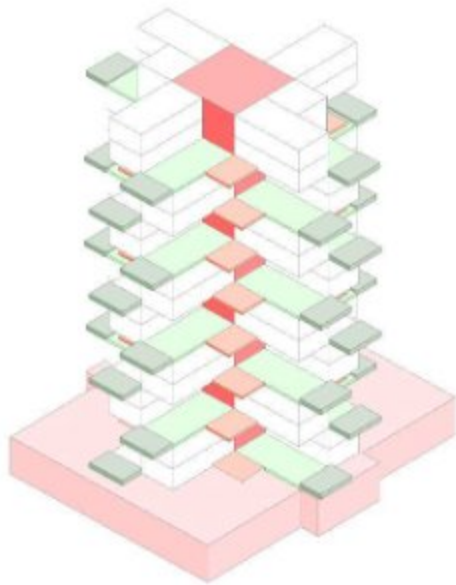
Common areas functions like an Indian Street, allowing private and public spaces to communicate and connect.

Conceptual Development unit of Hybrid Tower



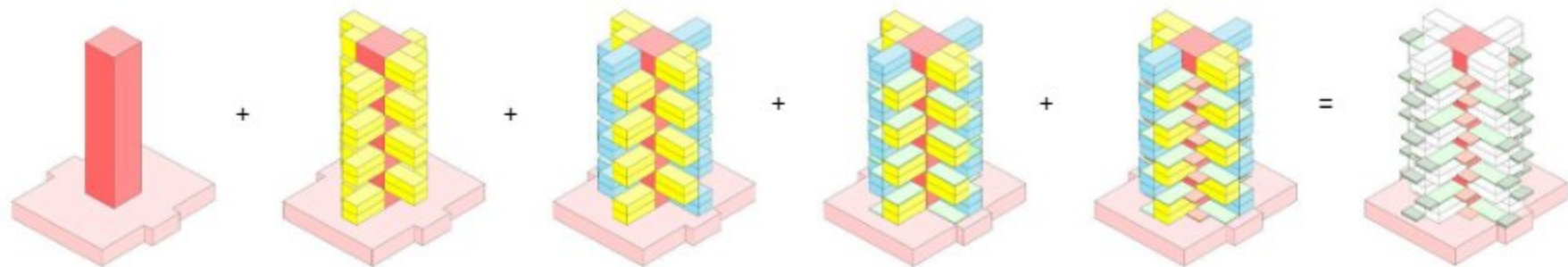
Balconies serve as gathering places for people to socialise and engage in recreational activities.

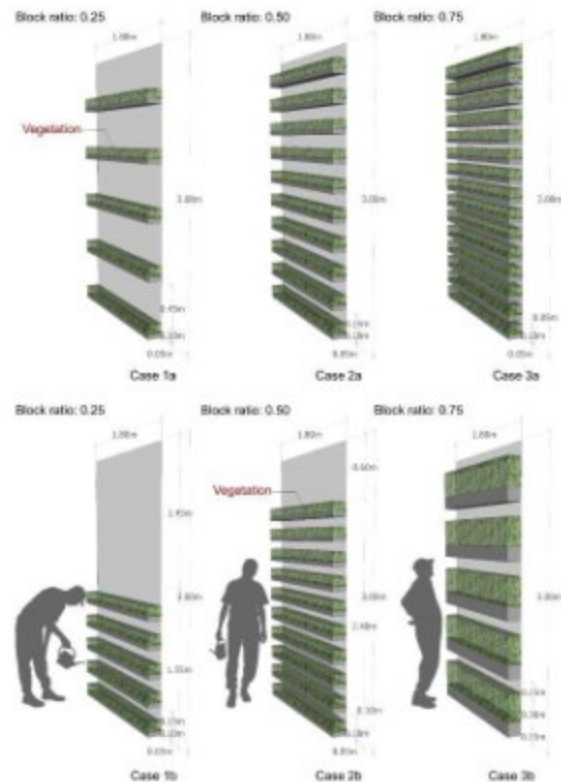
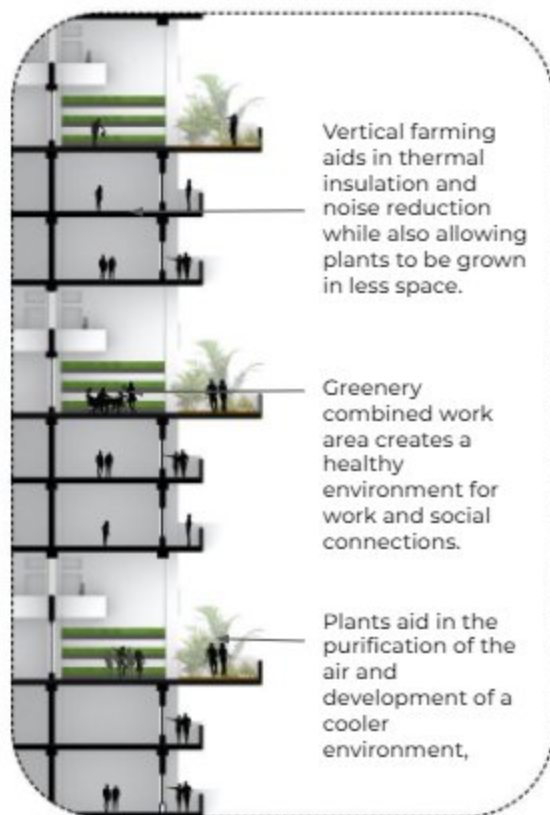
Conceptual Development unit of Hybrid Tower



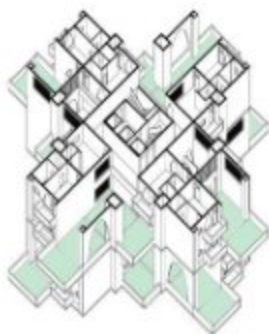
Hydroponic Farming in Terraces
for food cultivation in future.

Conceptual Development unit of Hybrid Tower

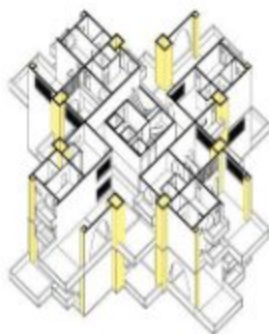




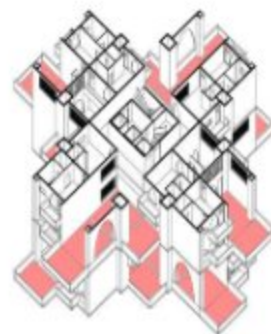
Different Iteration mode of Hydroponic farming in Balcony



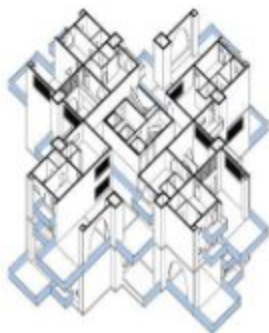
These spaces will serve as the base for cultivation of food.



Chambers denoted will carry ducts throughout the building. It'll also carry pipes for rain water harvesting. It also contain pipes that treats waste water and makes it suitable for growing food.



These spaces will accommodate social interactions, acting as community spaces.



Balconies acts like Indian streets where interactions happens between private and public open spaces.

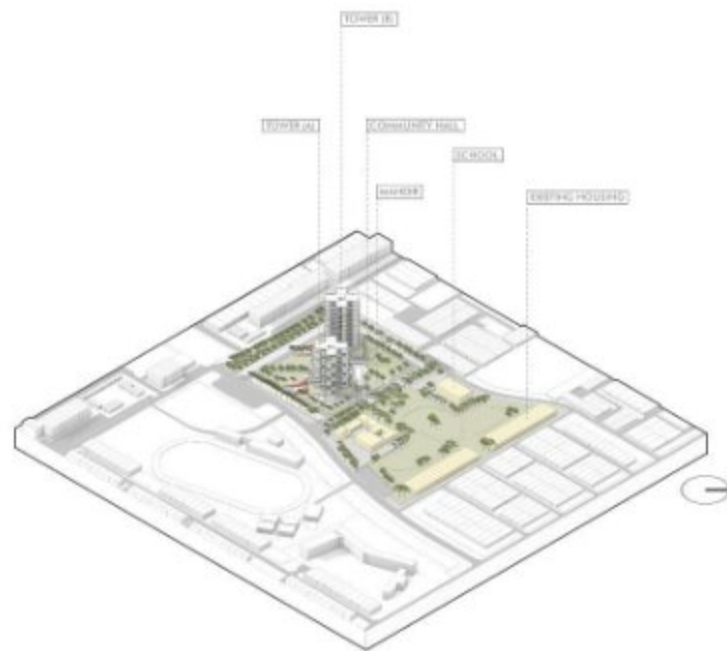


Core is centrally placed and also helps in circulation throughout the building by the means of stairs, lifts and walking passages



Air entering through balconies and jalis moves into the tube in tube structure that furthers helps in natural ventilation to spread evenly in the entire building

SITE PLAN



ISOMETRIC VIEW OF SITE



SCALE

0m 100m

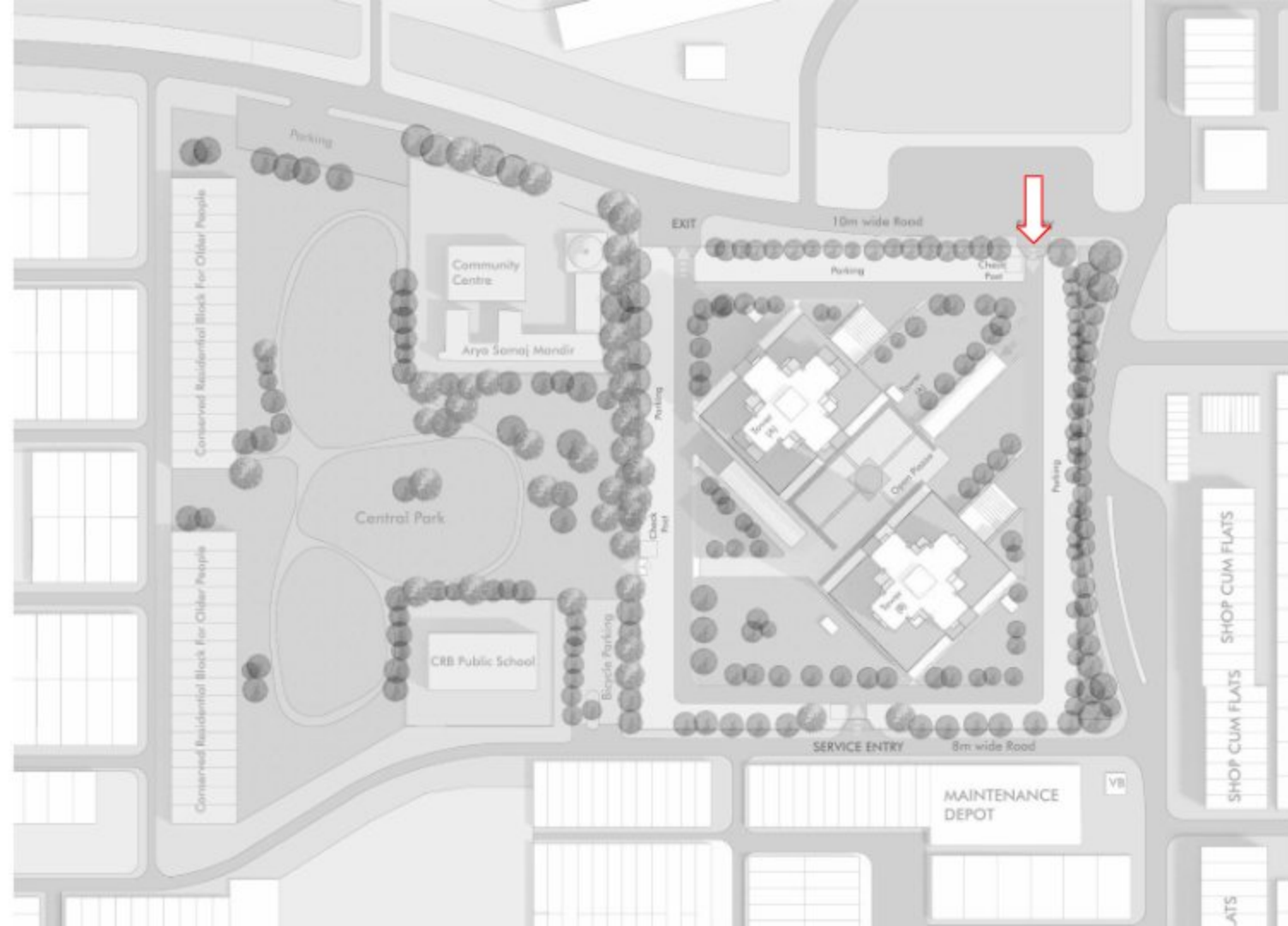
Location- Sector 7-c, Chandigarh, India

Total Site Area: 15.64 Acre (63292.83 sqm)

Total Ground coverage: 39%

Total Built up: 98987.78 sqm

FAR: 1.56



Main Entry



Service Entry



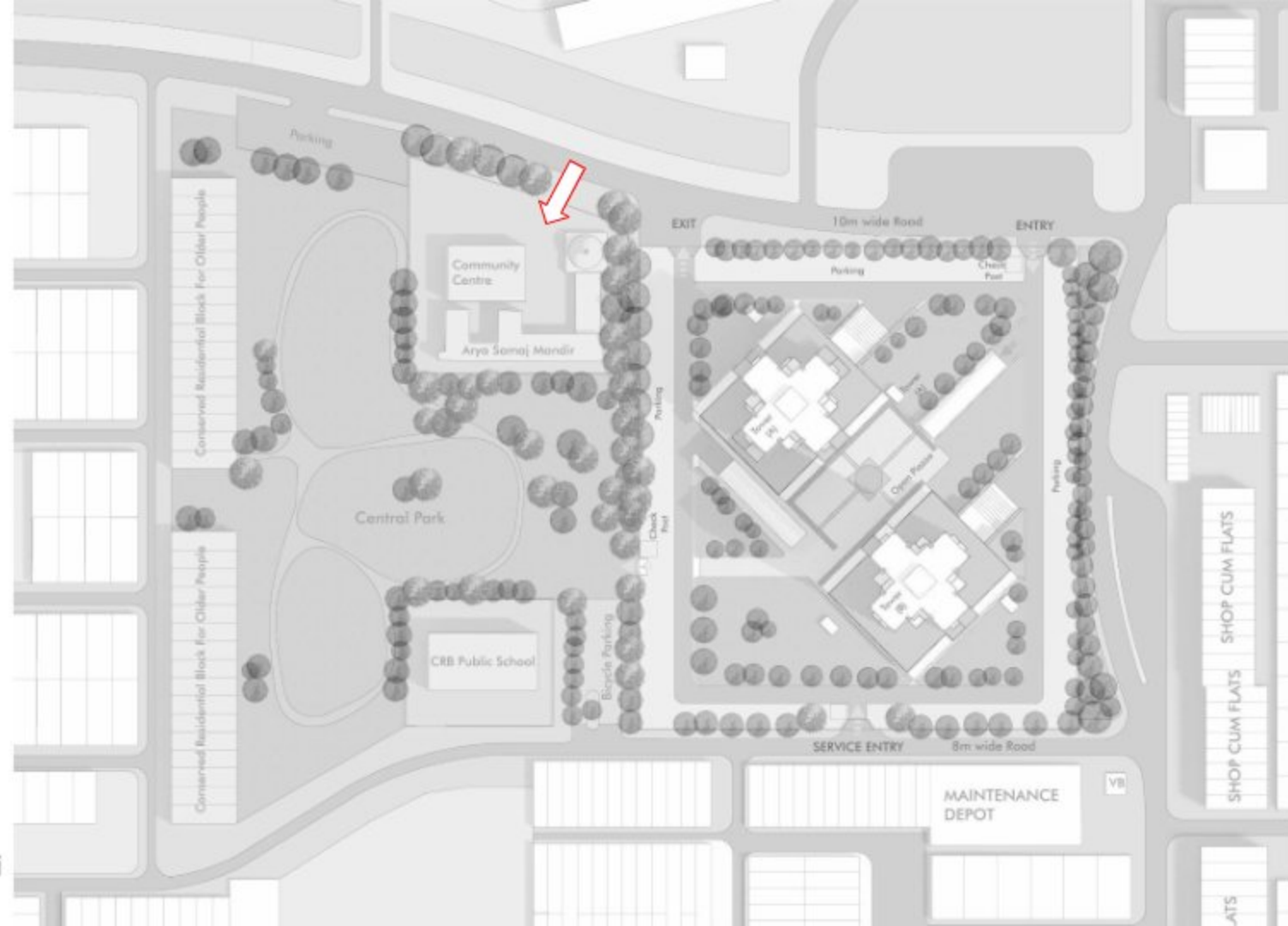
Exit



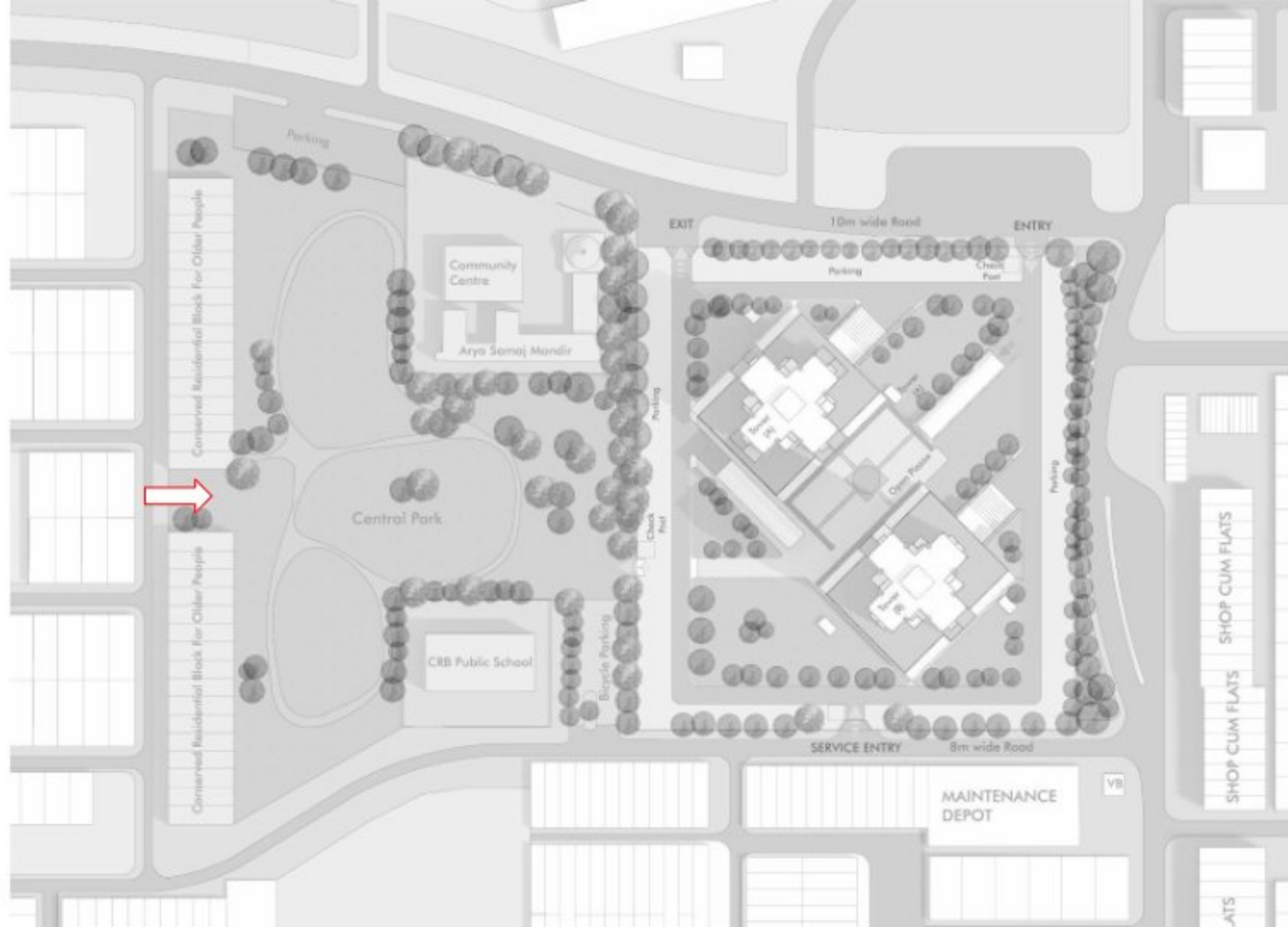
Entry to
Cental Park



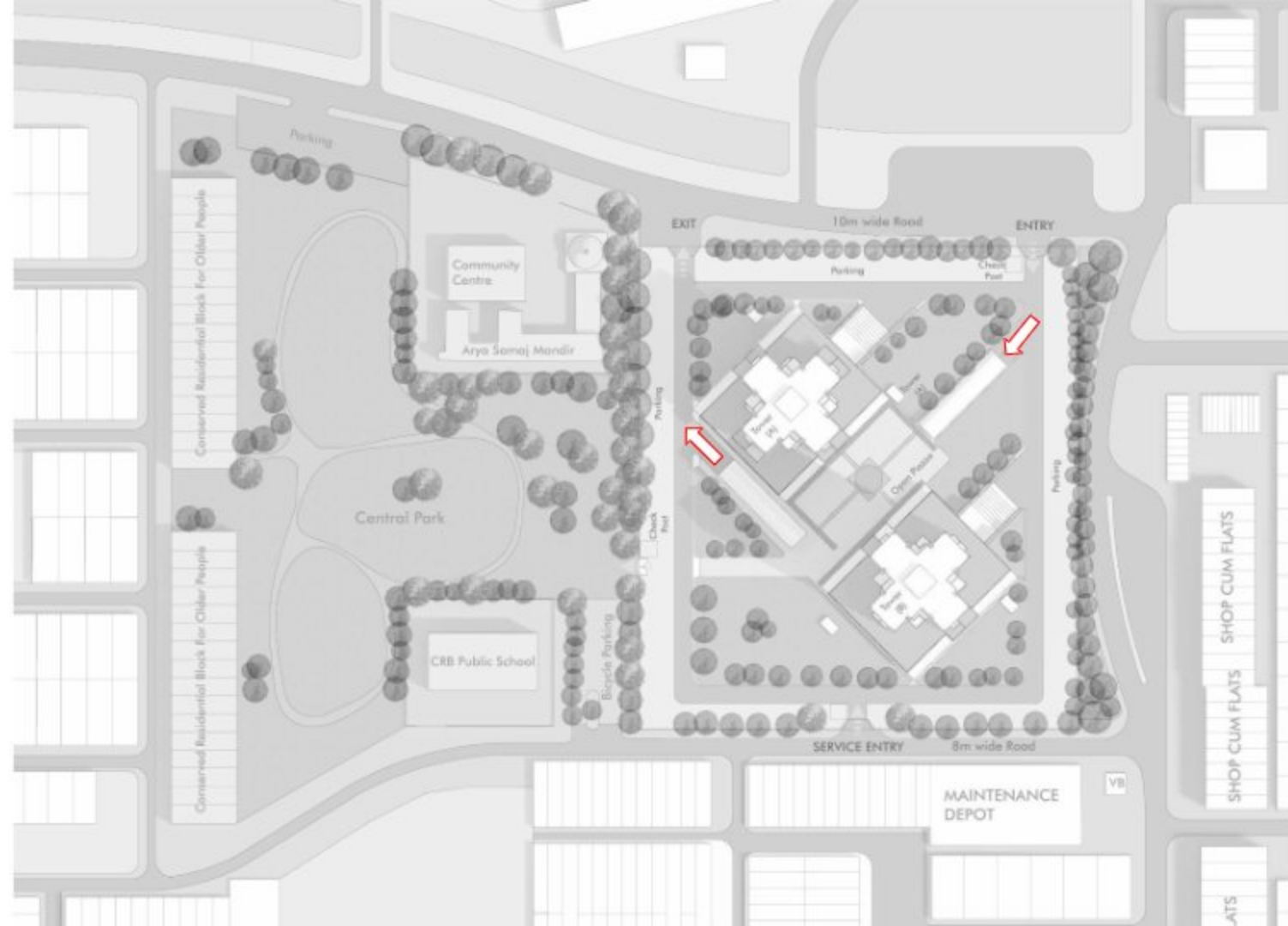
Entry to
Bicycle
Parking



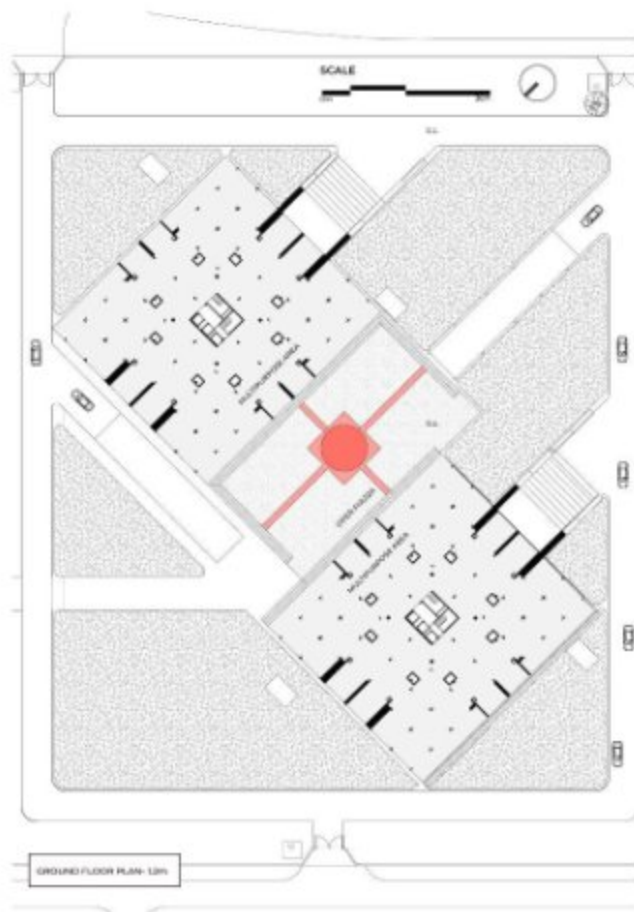
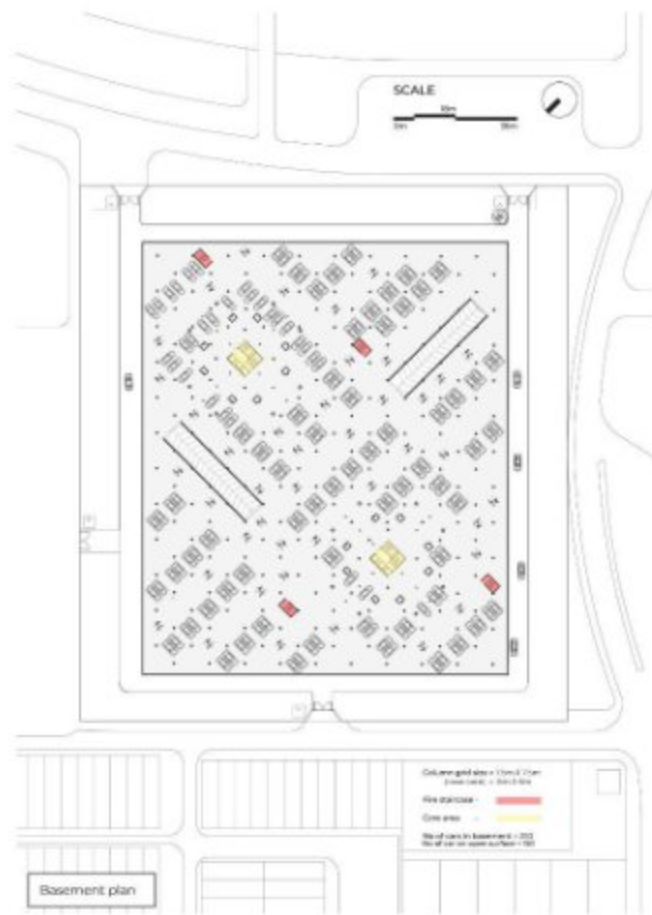
Entry to
Arya Samaj
Mandir



Entry to
Conserved
Residences

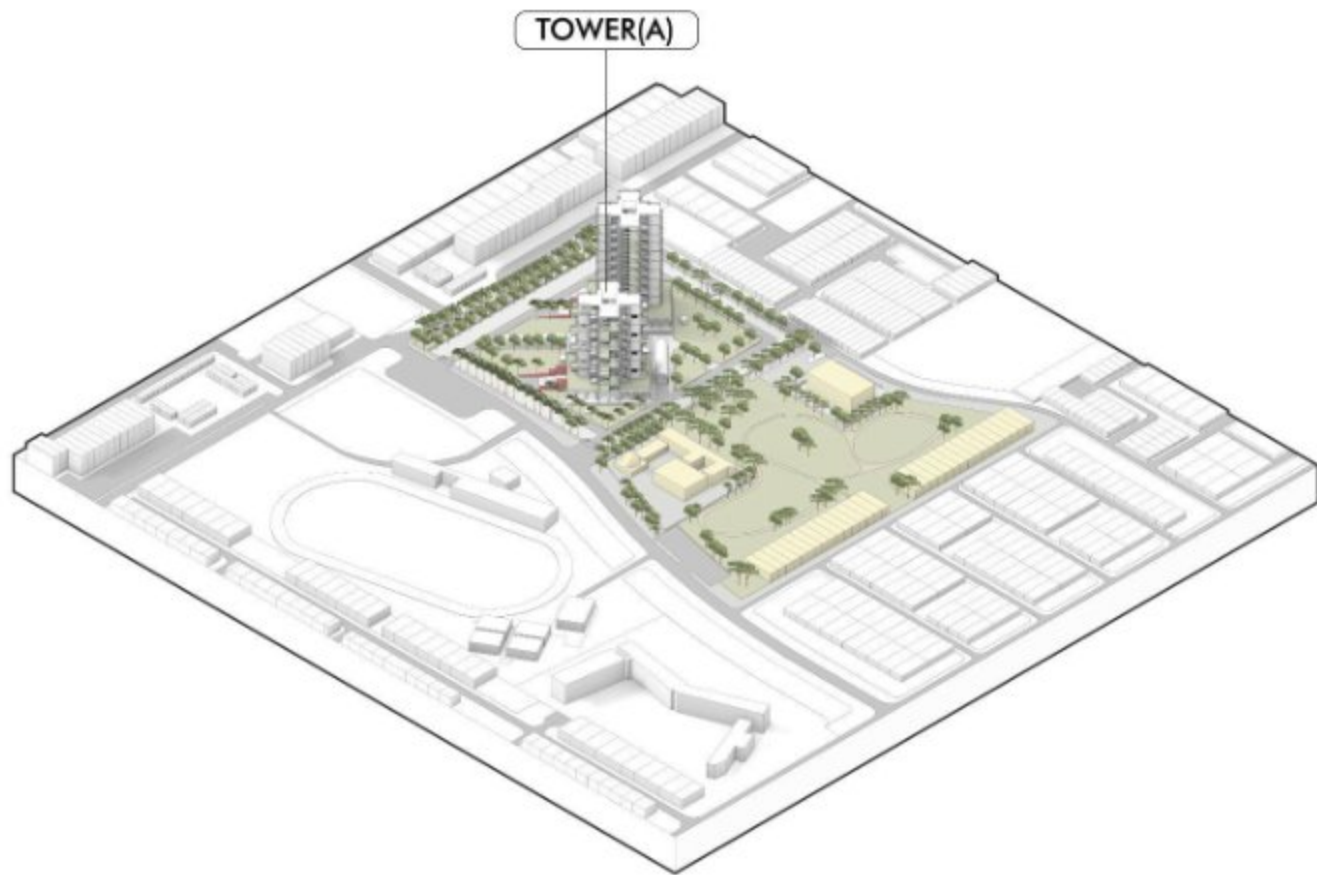


Basement
Entry /
Exit

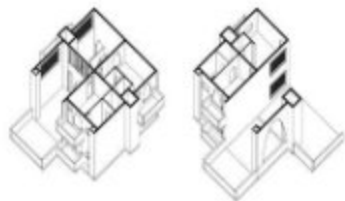




Entry to
Tower A

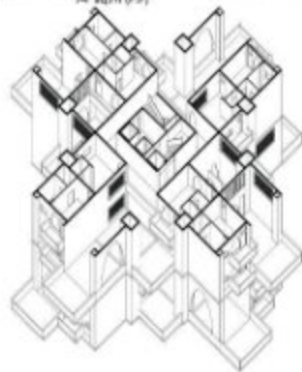


Module for Tower A

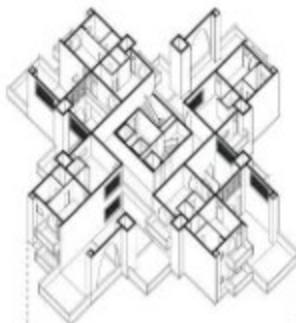


3bhk (Duplex module)
Carpet Area = 170 sq.m (G.F)
74 sq.m (F.F)

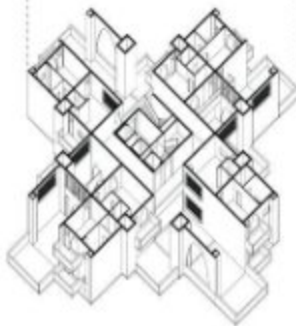
1bhk module
Carpet Area = 74 Sq.m



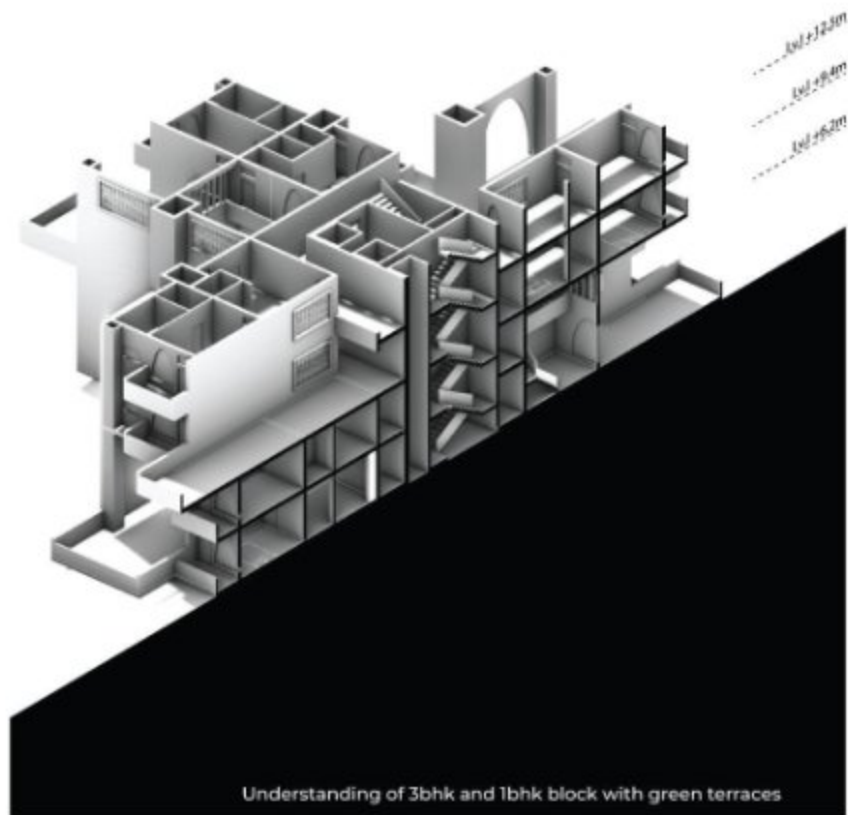
Combination of floor with tube in tube structure



T.F and F.O.F combined



G.F and F.F combined



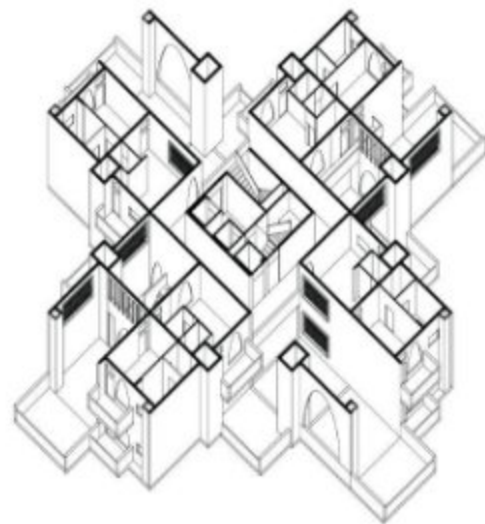
Understanding of 3bhk and 1bhk block with green terraces



PLAN
Lvl (G+2)



PLAN
Lvl (G+3)



ISOMETRIC OF TYPICAL UNIT

TOWER (A)

Scale:  0m 18m

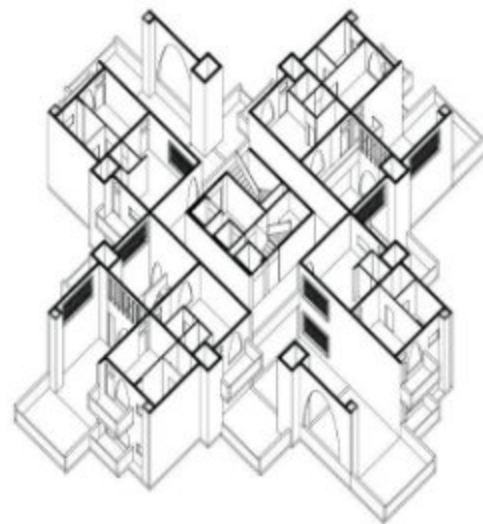


PLAN
L.v.I (G+2)



PLAN
L.v.I (G+3)

- Hydroponic Farming area
- Multi- Purpose area



ISOMETRIC OF TYPICAL UNIT

TOWER (A)

Scale: 0m 18m



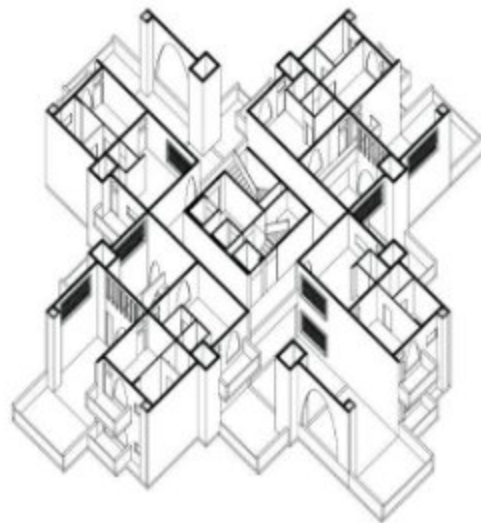
PLAN
Lx.I (G+2)



PLAN
Lx.I (G+3)

3 BHK

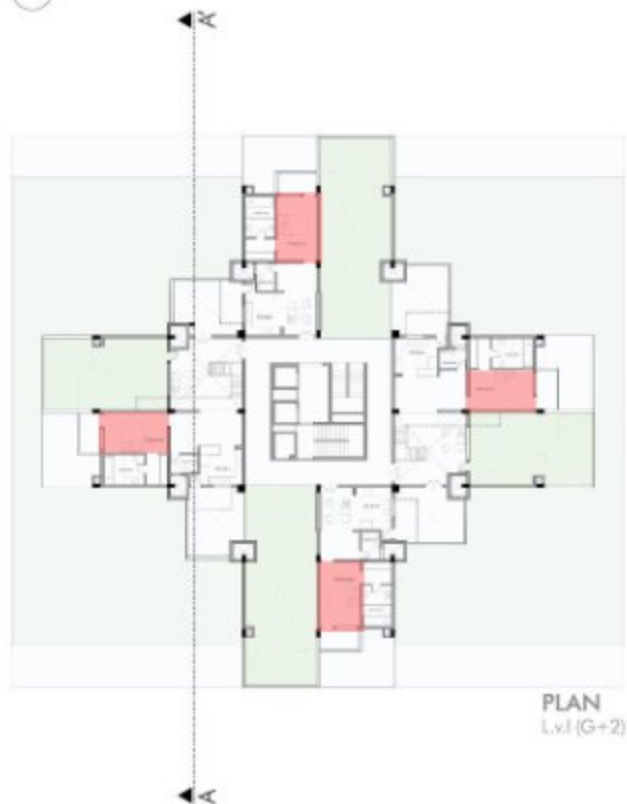
1 BHK



ISOMETRIC OF TYPICAL UNIT

TOWER (A)

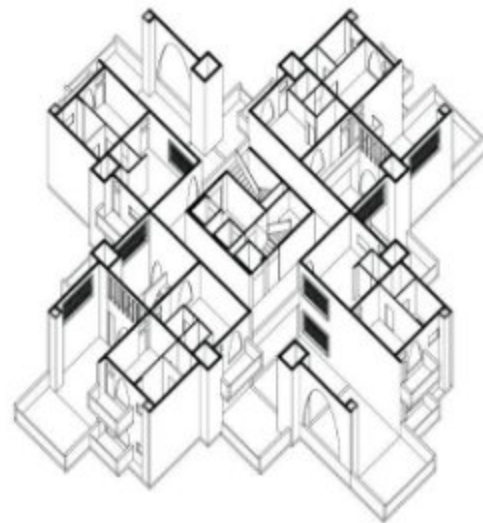
Scale: 0m 18m



PLAN
L.v.I (G+2)



PLAN
L.v.I (G+3)



ISOMETRIC OF TYPICAL UNIT

Bedrooms

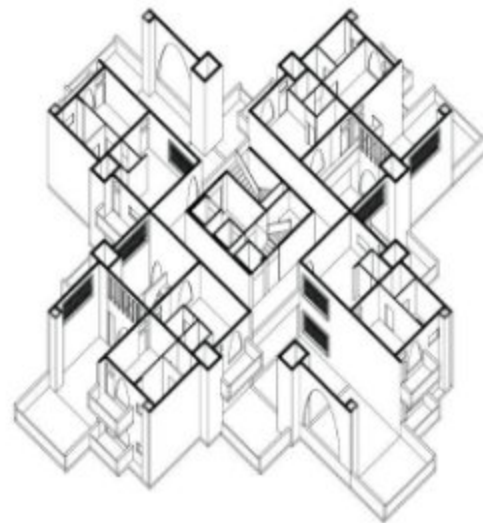
Scale:  0m 18m



PLAN
Lx.I (G+2)



PLAN
Lx.I (G+3)



ISOMETRIC OF TYPICAL UNIT

Washrooms

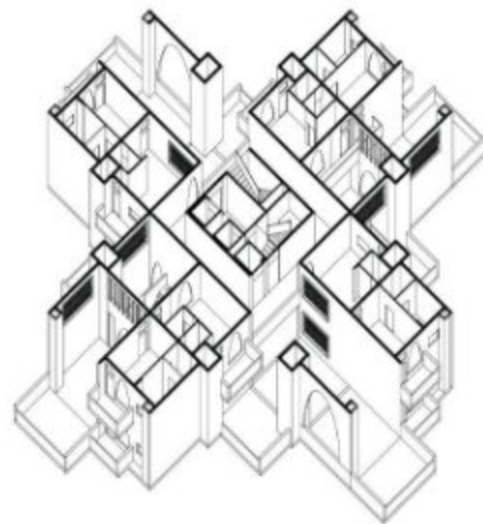
Scale: 0m 18m



PLAN
L.v.1 (G+2)



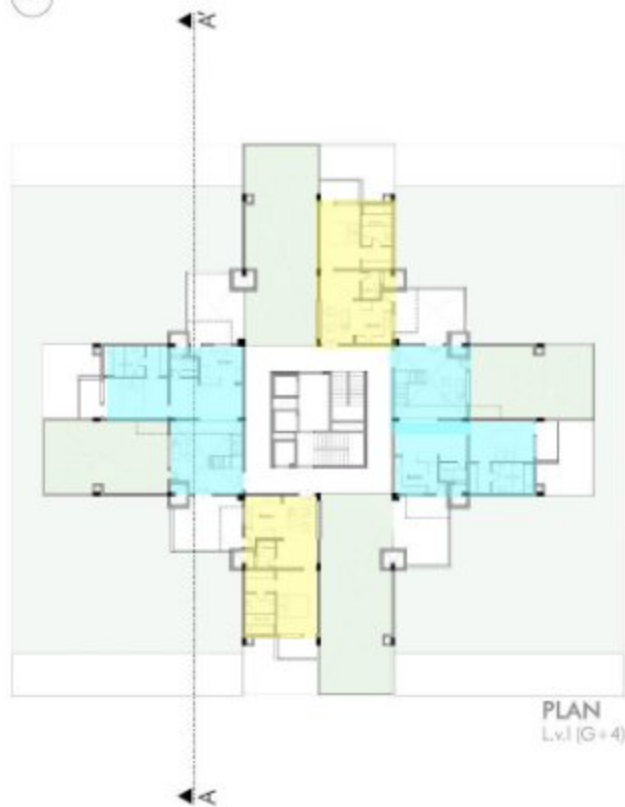
PLAN
L.v.1 (G+3)



ISOMETRIC OF TYPICAL UNIT

Kitchen

Scale: 0m 18m

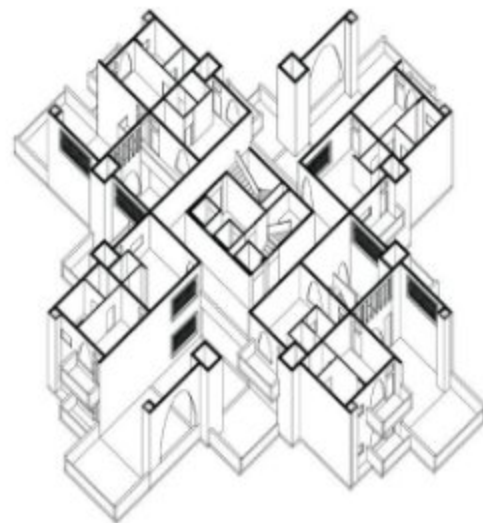


PLAN
Lv.1 (G+4)



PLAN
Lv.1 (G+5)

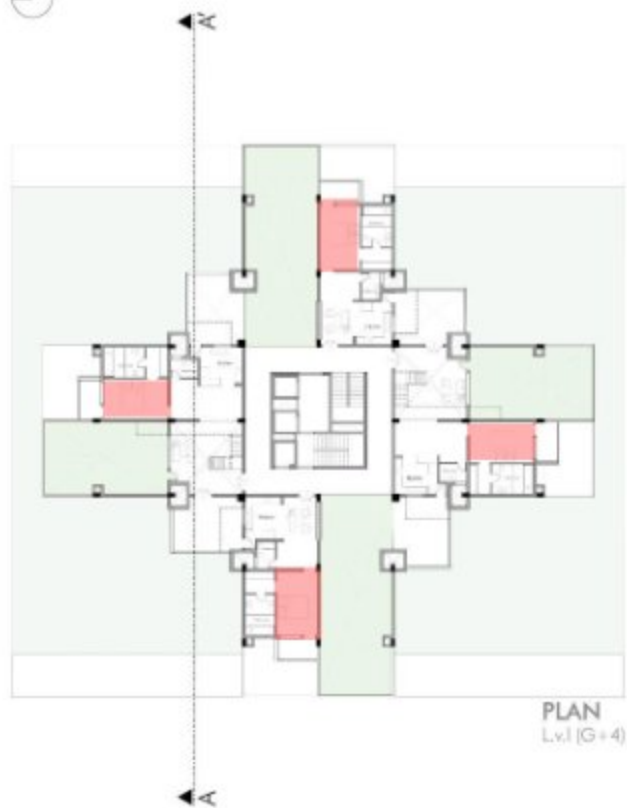
- 3 BHK
- 1 BHK



ISOMETRIC OF TYPICAL UNIT

TOWER (A)

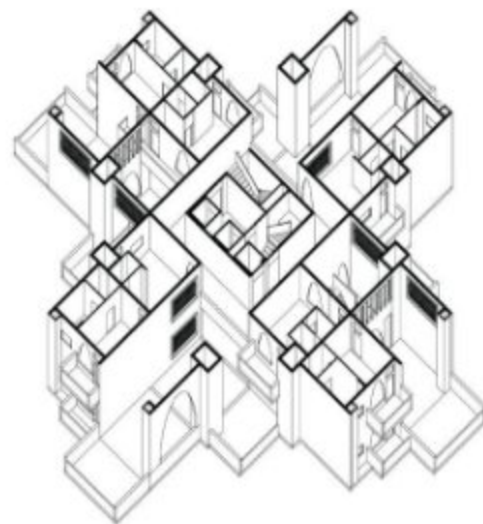
Scale: 0m 18m



PLAN
Lv.1 (G+4)



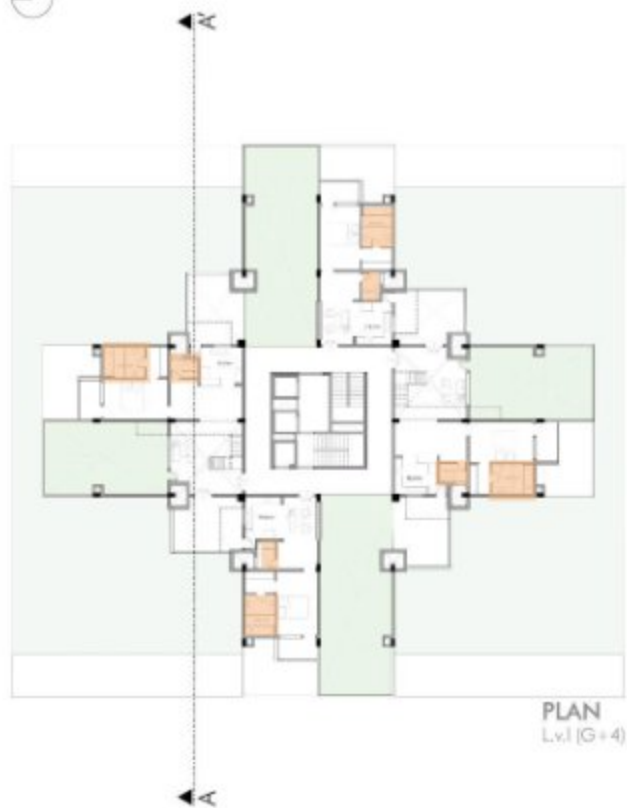
PLAN
Lv.1 (G+5)



ISOMETRIC OF TYPICAL UNIT

Bedrooms

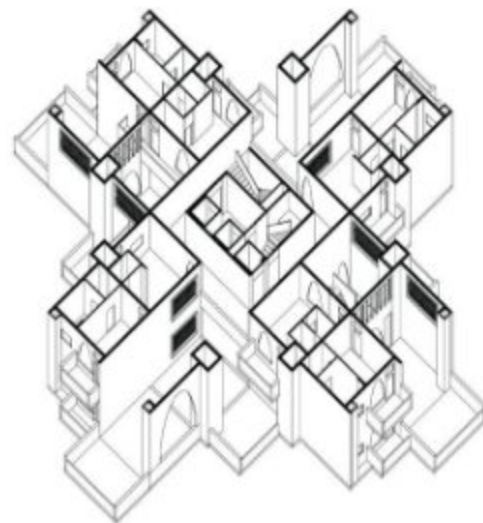
Scale:  0m 18m



PLAN
Lv.4 (G+4)



PLAN
Lv.5 (G+5)



ISOMETRIC OF TYPICAL UNIT

Washrooms

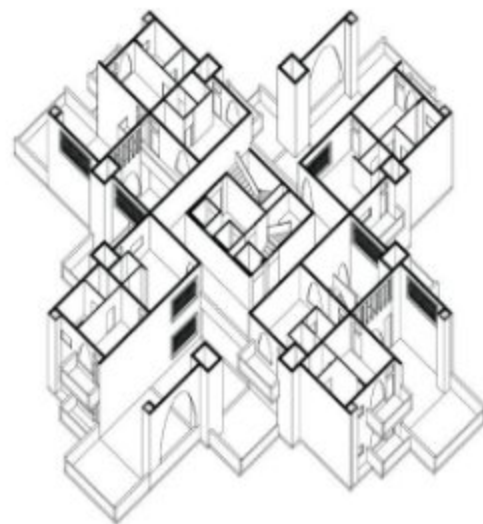
Scale: 0m 18m



PLAN
Lv.1 (G+4)



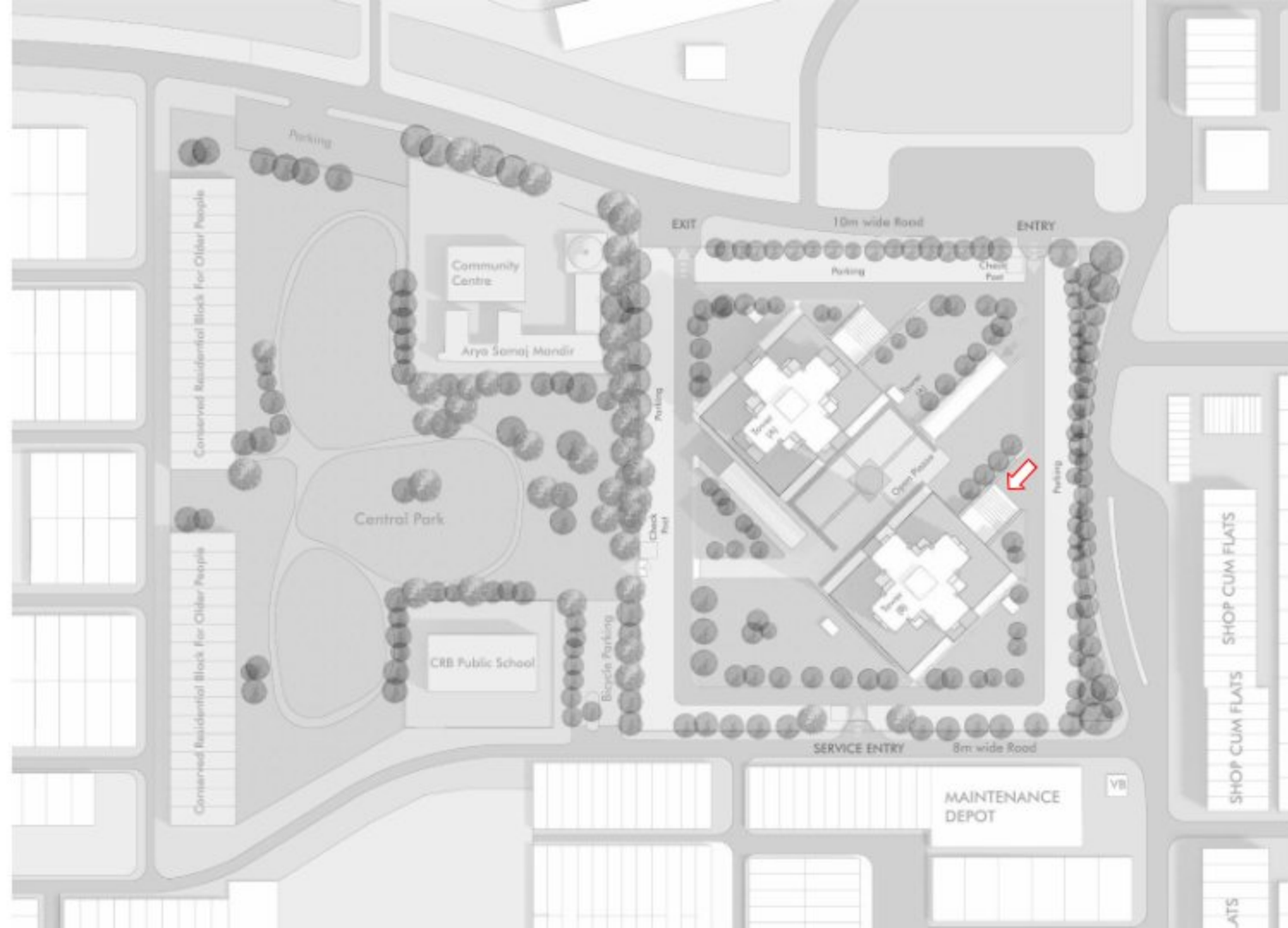
PLAN
Lv.1 (G+5)



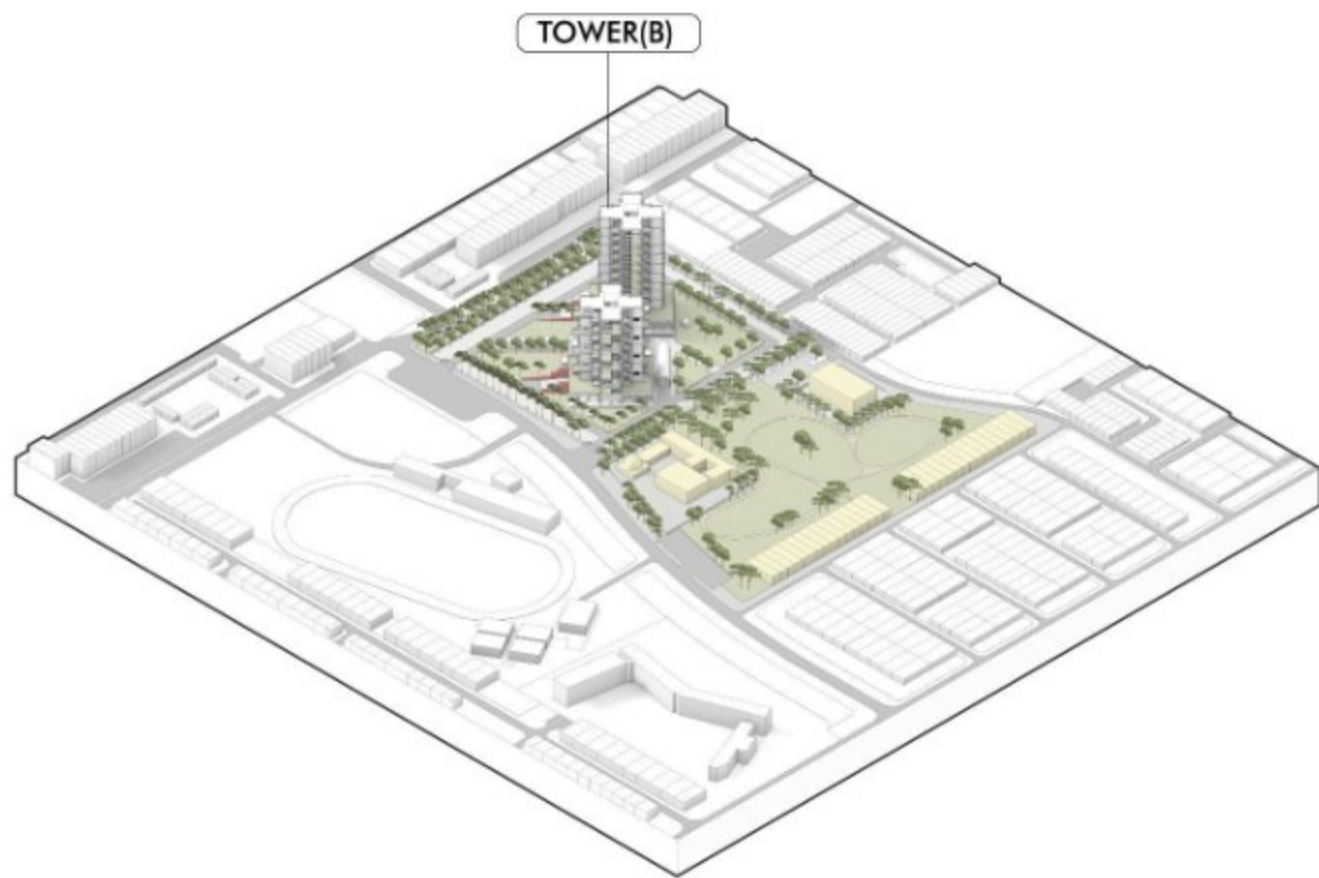
ISOMETRIC OF TYPICAL UNIT

Kitchen

Scale:  0m 18m



Entry to
Tower B



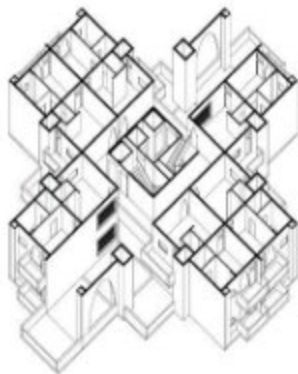
Module for Tower B



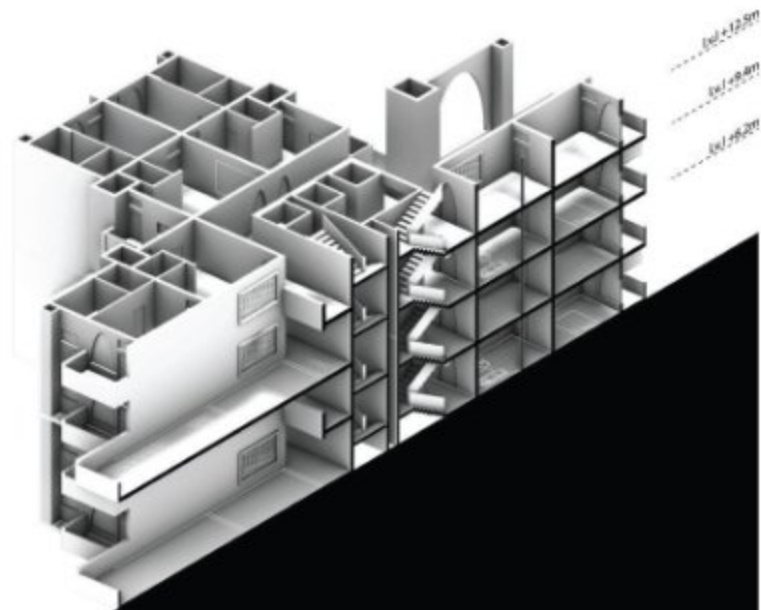
1bhk module with green terrace
Carpet Area = 74 Sq.m



1bhk module stacked



Combination of floor with tube in tube structure



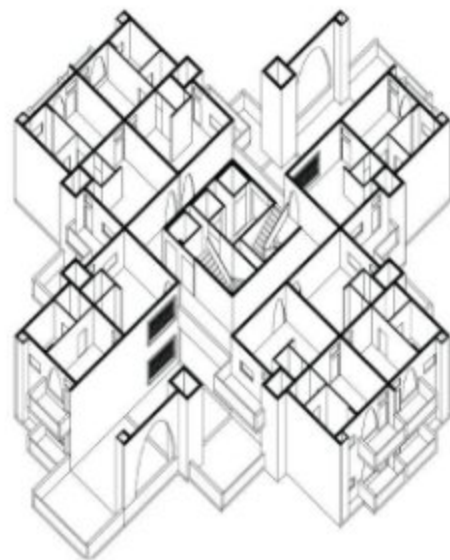
Understanding of 1bhk block with green terraces



PLAN
Lvl (G+2)



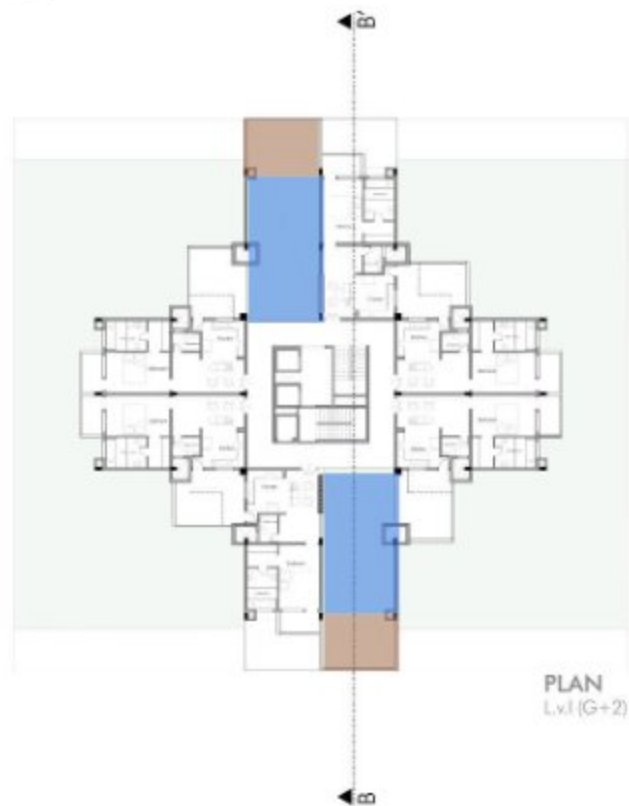
PLAN
Lvl (G+3)



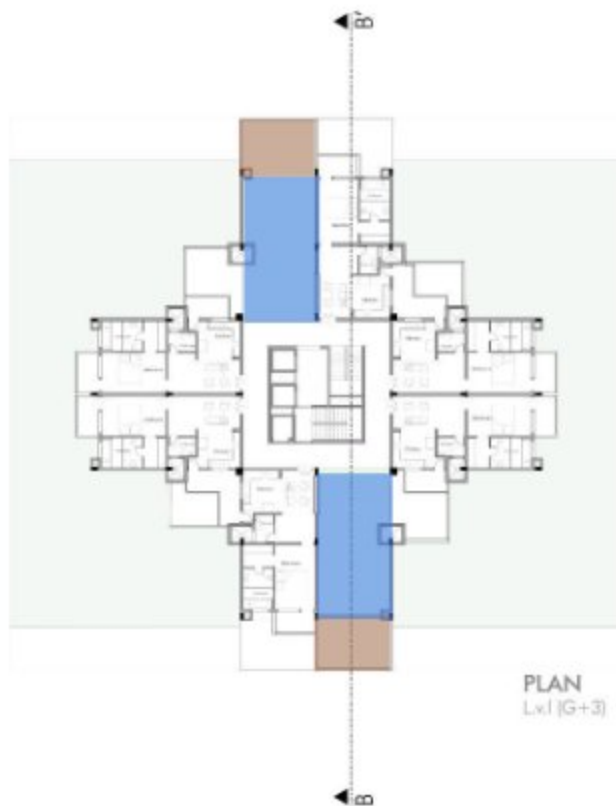
ISOMETRIC OF TYPICAL UNIT

TOWER (B)

Scale:  0m 18m

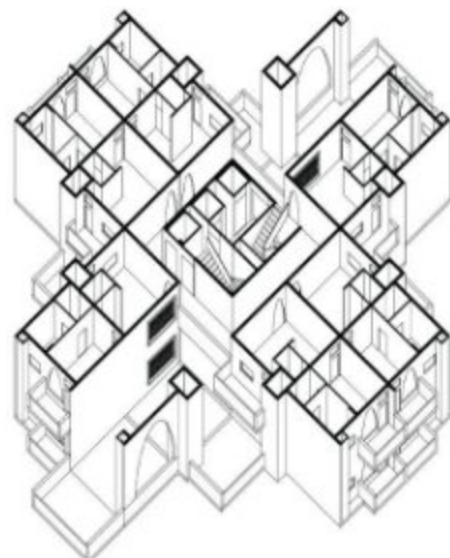


PLAN
Lv.1 (G+2)



PLAN
Lv.1 (G+3)

- Hydroponic Farming area
- Multi- Purpose area



ISOMETRIC OF TYPICAL UNIT

TOWER (B)

Scale: 0m 18m

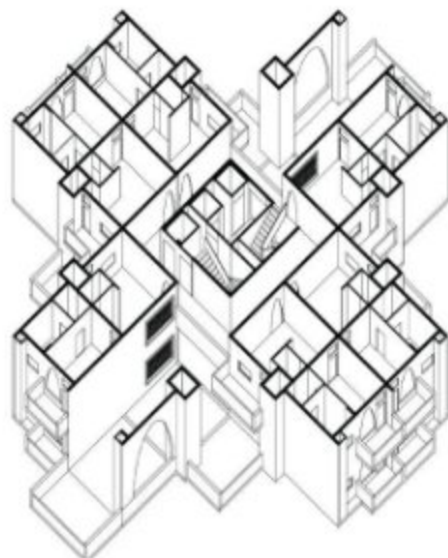


PLAN
Lvl (G+2)



PLAN
Lvl (G+3)

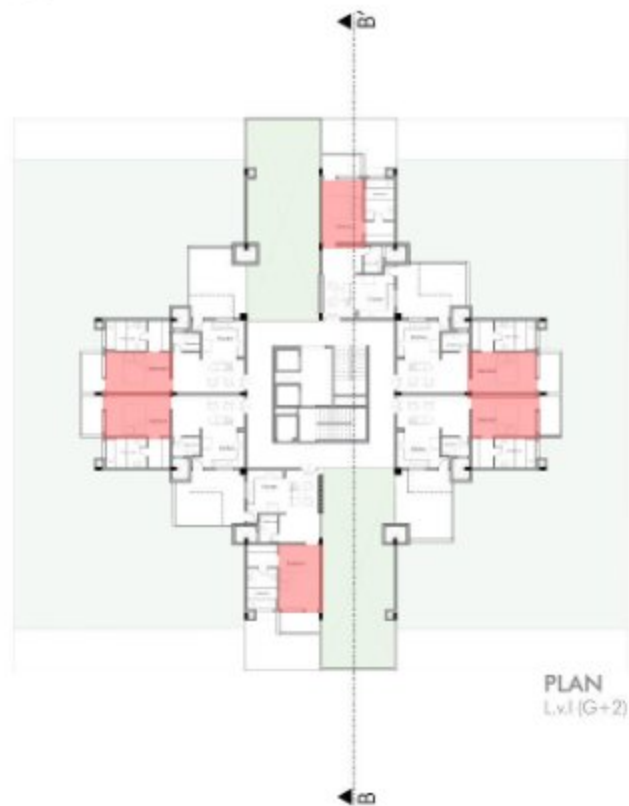
1 BHK



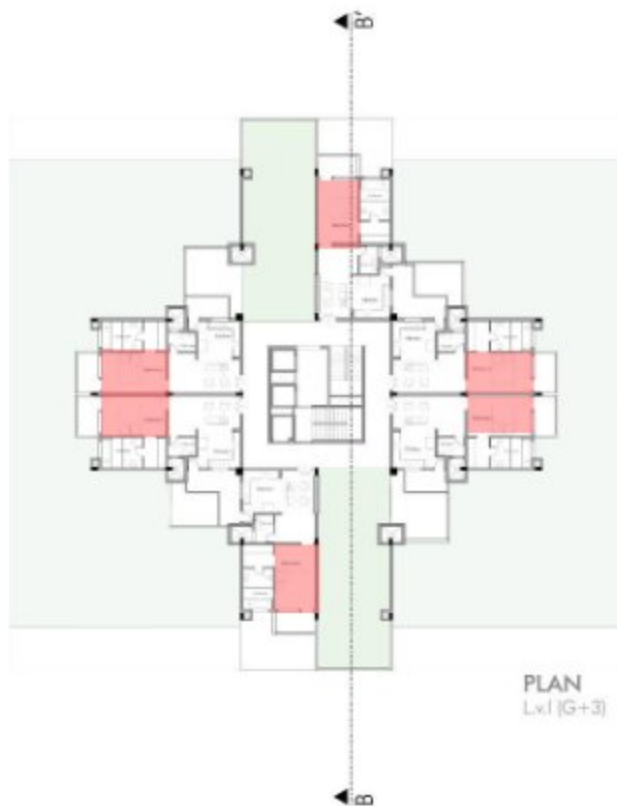
ISOMETRIC OF TYPICAL UNIT

TOWER (B)

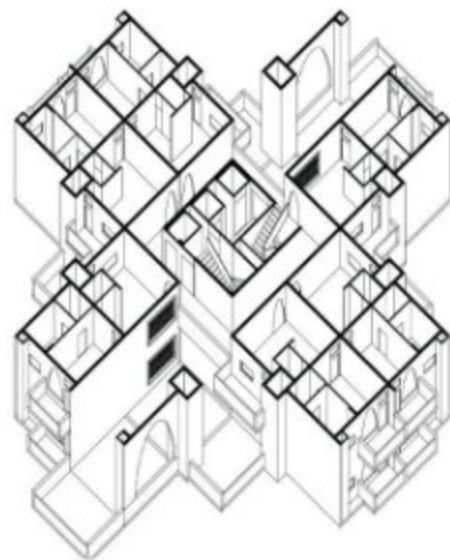
Scale: 0m 18m



PLAN
Lvl (G+2)



PLAN
Lvl (G+3)



ISOMETRIC OF TYPICAL UNIT

Bedrooms

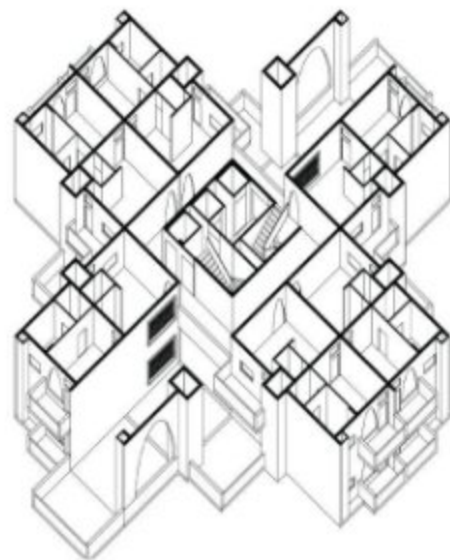
Scale:  0m 18m



PLAN
Lv.1 (G+2)



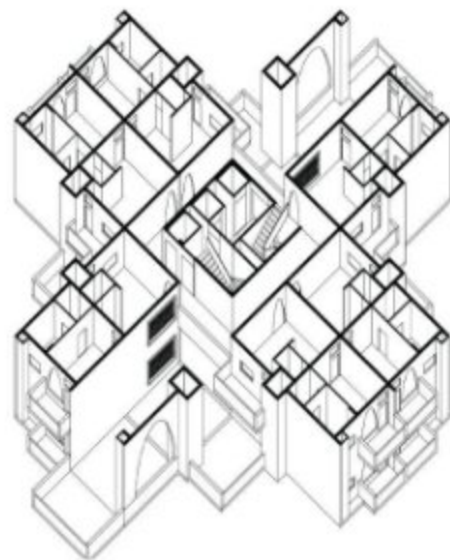
PLAN
Lv.1 (G+3)



ISOMETRIC OF TYPICAL UNIT

Washrooms

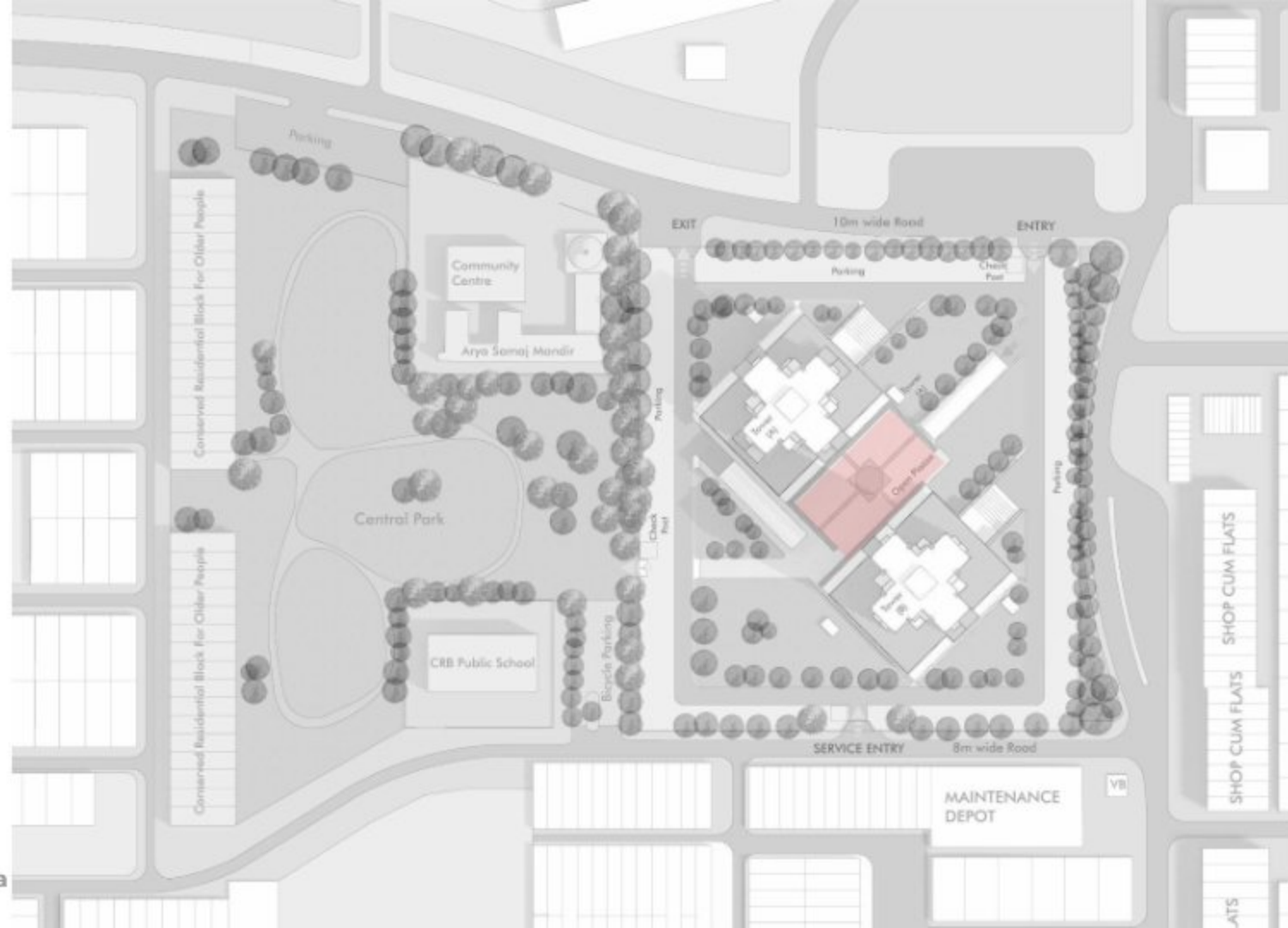
Scale:  0m 18m



ISOMETRIC OF TYPICAL UNIT

Kitchen

Scale: 0m 18m



Open Piazza



Landscape



View of OAT



South Elevation



Note: All elevations are inspired from Punjab vernacular architecture.



South East Elevation





View From Main Road



Social Interaction Spaces



Entry to Tower A



Social Interaction Spaces



View Of Open Piazza



ISOMETRIC OF A SITE