

Context

The design has tried to openly interpret a home that is supposedly in a conventional South-Indian Agraharam surrounding, which cases a linear organisation of spaces in general and has characteristic shared exterior walls.

Design and Client Brief

- The design has been formulated after adopting a qualitative and observational research method to study the settlements of the Thekkegramam community, in Chittur, Palakkad.
- Not only building elements were observed, but their function as an integral part of the society was analyzed. The inhabitants were studied within the spatial settings, how they were communicating with the spatial settings, how spaces influenced the functional behavior of the community.
- Therefore, the design has taken shape keeping in mind the requirements of a two or three membered family who occasionally welcome guests.

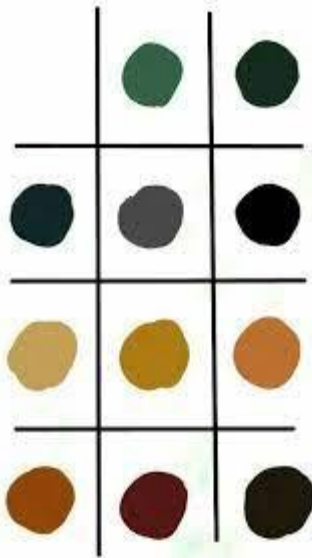


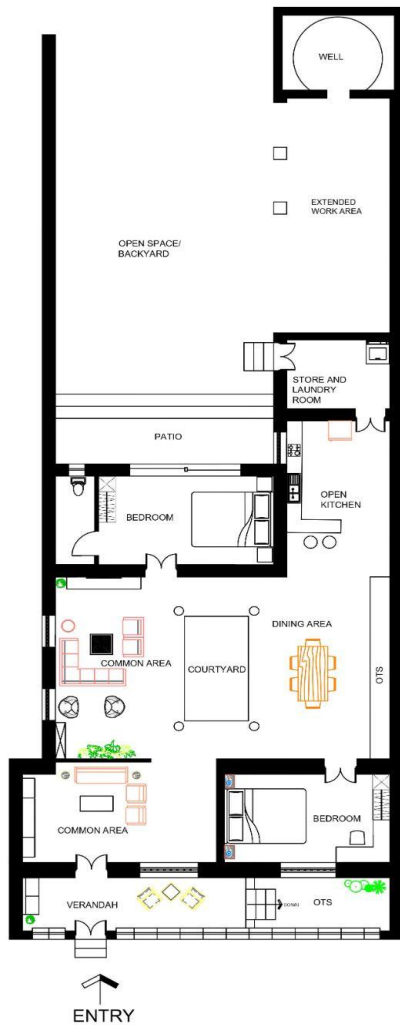
Existing conditions



Mood Board

We believe that the key to creating a style that feels modern in its utility and minimal in design is to **control the color palette**. The proposed hybrid interiors stick to the neutrals when selecting furnishings, decor and bedding. Then, add a dark blue or green throw or pop of greenery to create a bit of visual interest.



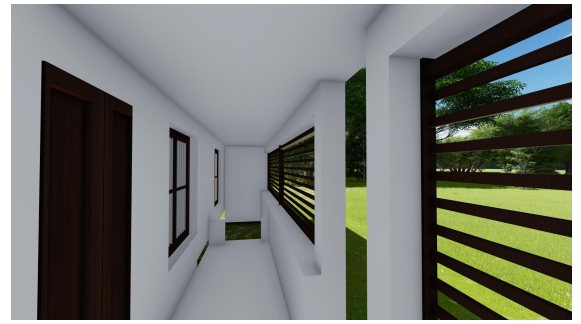


PLAN

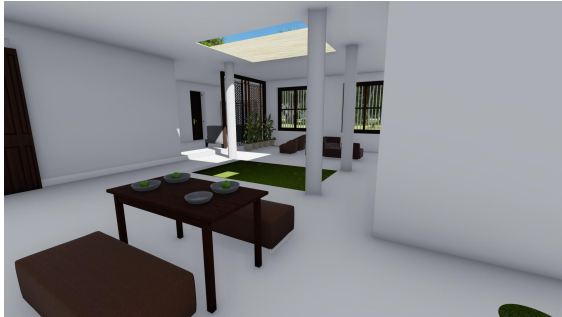
- Hence, the physical characteristics of dwellings and perception of dwellers being analysed led to the visual observation of houses and hence gave rise to an internal courtyard, bedrooms, wash and an extended patio space.
- Environmental settings, physical properties, spatial behavior, cultural expression that were collected and are hence encapsulated in the fenestrations, wall fixtures, furniture, etc.



SECTIONAL VIEWS



INTERIOR VIEWS





SCMS SCHOOL
OF ARCHITECTURE

Vidya Nagar, Karukutty, Ernakulam-683582
Phone: 0484 6619000



JENET JAMES
SBA/311/19

[Signature]
Registrar

B.Arch

www.scmsgroup.org

PARTICIPANT 02