

ELEGANCE

It can be described in terms of personality, color, and sound – a passionate individual, vivid colors, and rich tones.

BALANCING SCALE, TEXTURE, AND COLOR ALSO CREATES VIBRANCY. The distinction of these elements is personal and powerful. We seek to highlight these elements



An elegant Interior, we take a holistic approach to the way you live with an eye on mind, body, and environment to design a space that truly supports and empowers your life.

We mix creative and functional interior design practices with energy-based modalities to transform your home or workplace into spaces that truly work



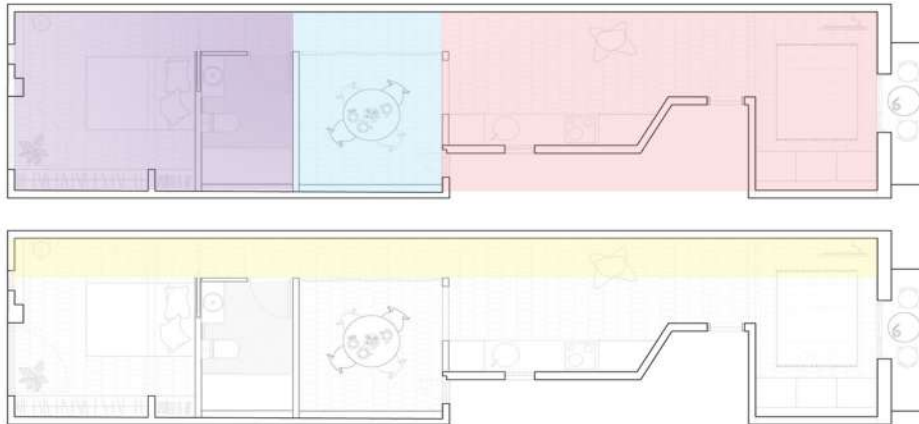
Featuring different decorative elements like wood, stone, plastic, ceramics, metal or marble, modern electric fireplaces are versatile and can be used as an interior decorative element in any room. Incorporating an accent wall can be a powerful tool for your interior decor plans. Having a wall that stands out from the rest in your living room, kitchen, bathroom, bedroom, dining room, basement or entertainment space and has a different color, pattern, texture or finishing material give a wow factor to interior

Wooden furniture is no doubt one of the most versatile of furnishings and is a core element of transforming any interior space. Wood can fit in any type of interior decor since it comes in many styles. With its natural and beautiful look, as well as different lines and patterns, wood is the perfect choice when we want to achieve an authentic and antique look in room. Right finish and placement in a room, wooden furniture can be a great focal point for the interior decor.

CONCEPT

PROJECT: Pujades 141 Apartment
 ARCHITECT: ARAMÉ STUDIO
 AREA: 40 M²

The project proposes longer views and a perception of a bigger space through enfilades (a suite of rooms with doorways in line with each other.) of spaces that goes from the most "public spaces" to the more private ones.



Despite having a small apartment, the client wanted to have two separate rooms, one as the main bedroom the other with more flexible use, that's why we propose an "open room" with flexible doors, connected visually with the other spaces of the apartment that can be used as a dining room, a study room or a guest room.



PROJECT: EVERYTHING IN PLACE HOUSE
 ARCHITECT: HUGE STUDIO
 AREA: 70 M²

A flat they wanted to reform to live as a couple. However, they also wanted to have the option of having a room available for her son, who visits them frequently, as well as to accommodate the guests.



The apartment can be a traditional dwelling with two bedrooms.



A flat for a couple with a bedroom in fluid relation to the rest of the house.



Apartment is located on a low floor and has a longitudinal configuration, with only one of its short sides with natural lighting. Therefore, it was decided to configure the entire apartment through a large amplified piece of furniture, a piece where everything is in place.



A space of more than 50 square meters to organize a party.

A HYBRID SPACE- THE NEW TERM OF "HYBRID BUILDING" IS THE BASIC OF MIXED USE TO MAKE IMPROVEMENT IN ORDER TO FIT WORLD'S CHANGING AND DEMAND/REQUIREMENTS. MANY ARCHITECTS/DESIGNERS USE THE DEFINITION OF HYBRID BUILDING WITHIN THEIR BUILDINGS DESIGN, AS THEY FOCUS THE PUBLIC SPACE, USER'S INTERACTION AND SPATIAL ARRANGEMENT.

THE INTENTION WITH THIS DESIGN PLOT WAS TO HAVE SPACES, FLEXIBLE FOR MULTIPLE USES AT DIFFERENT TIMES OF THE DAY, WITH DIFFERENT ACTIVITIES TAKING PLACE.

THE RESIDENTS



THE OWNER - A CELLOIST, WHO CONDUCTS CELLO CLASSES, AND REQUIRES A DEDICATED SPACE FOR TAKING THE CLASSES.

SHE TAKES CLASSES 5 DAYS A WEEK, TWO SESSIONS, MORNING 6AM TO 8AM AND EVENING 6PM TO 8PM.

HER PARENTS STAY AWAY, BUT VISIT HER EVERY SO OFTEN.

SHE ALSO WANTS A SOURCE TO EARN REVENUE BY HAVING A PAYING GUEST.



THE PAYING GUEST - A BACHELOR IN HIS EARLY TWENTIES, LOOKING FOR A STUDIO APARTMENT.

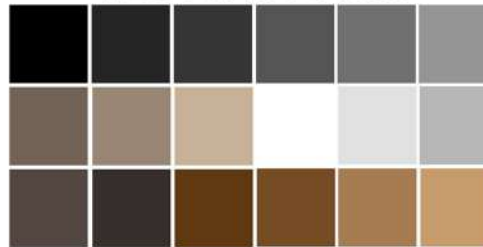
HE'S ALSO A PRACTICING MUSICIAN AND TAKES CLASSES UNDER THE OWNER.

HIS ROUTINE IS SUCH THAT HE DOESN'T SPEND A LOT OF TIME AT HOME, JUST FOR THE CLASSES.

FOR PRACTICING HIS INSTRUMENT HE NEEDS A FREE FLOOR SPACE



NEUTRAL TONES



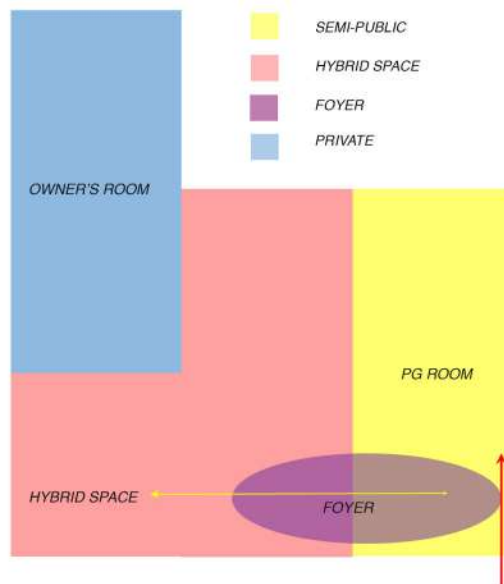
HER AESTHETICHER AESTHETIC

TAKING INTO ACCOUNT THE NATURE OF THE OWNER, SHE IS A CALM, SWEET, ENTHUSIACTIC PERSON WHO ENJOYS NEUTRAL TONES IN HER LIFE.

ALSO TAKES INTEREST IN CLICKING PICTURES OF SCENES. INCLUSION OS GREENS IS EYE CATCHING TO HER, AND CALMS THE MOOD.



some of her clicks portrayed



SPACES ACTIVATED AT DIFFERENT TIMINGS

FOYER - THE FOYER GETS ACTIVATED AT THE TIME OF CLASSES .

PG ROOM - WHEN THE GUYS USES HIS SPACE ,IS THE TIME THAT SPACE ACTIVATES

HYBRID SPACE - THIS SPACE ACTS AS MULTIPLE SPACES AT DIFFERENT TIMES OF THE DAY ,IT ACTS AS STUDIO IN MORNING AND EVENING .

AND ACT AS GUEST ROOM AND LIVING AT OTHER TIME OF THE DAY.

OWNERS ROOM - IT IS A PRIVATE SPACE ONLY BELONGS TO HER



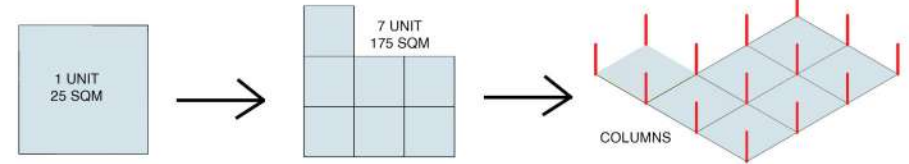
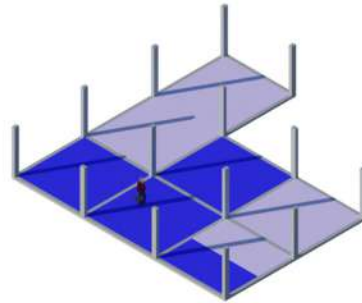
LOCATION - BANGALORE, KARNATAKA

SITE LOCATION - BEHIND BANGALORE BAPTIST HOSPITAL ,HEBBAL ,BANGALORE

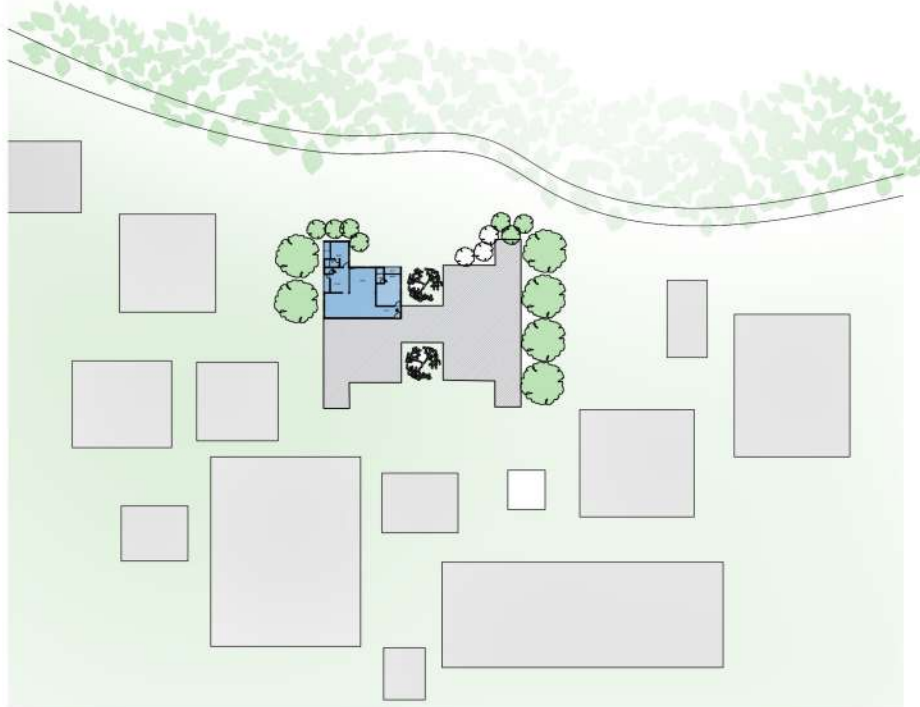
LANDMARK - HEBBAL LAKE PARK

THE AREA OF A UNIT IS 25 SQ M AND THE ENTIRE MODULE IS DIVIDED INTO 7 UNITS MAKING IT A TOTAL OF 175 SQ M

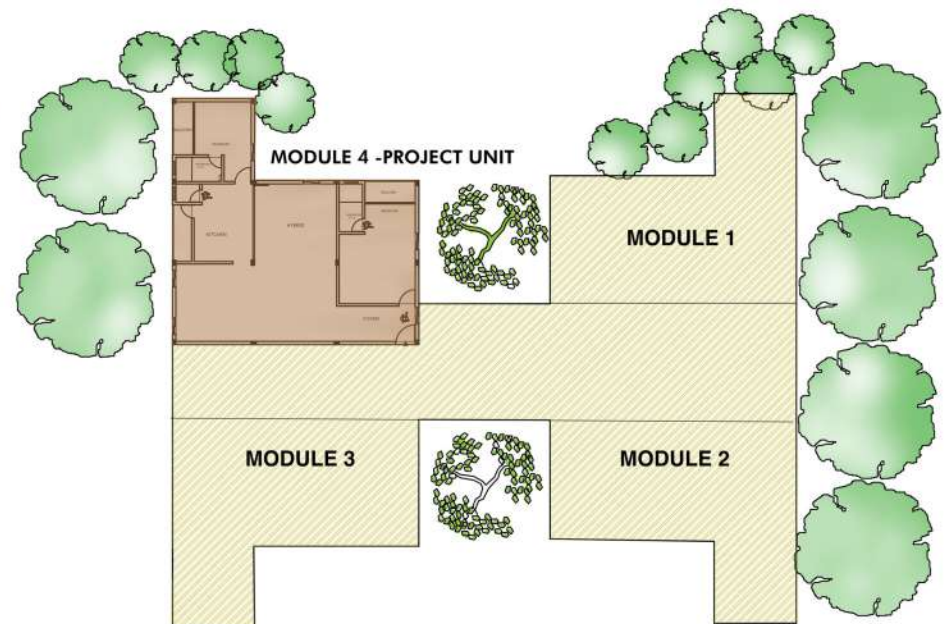
HYBRID SPACE - 30 %OF THE MODULE ACTS AS A HYBRID SPACE IN THIS STUDIO APARTMENT.

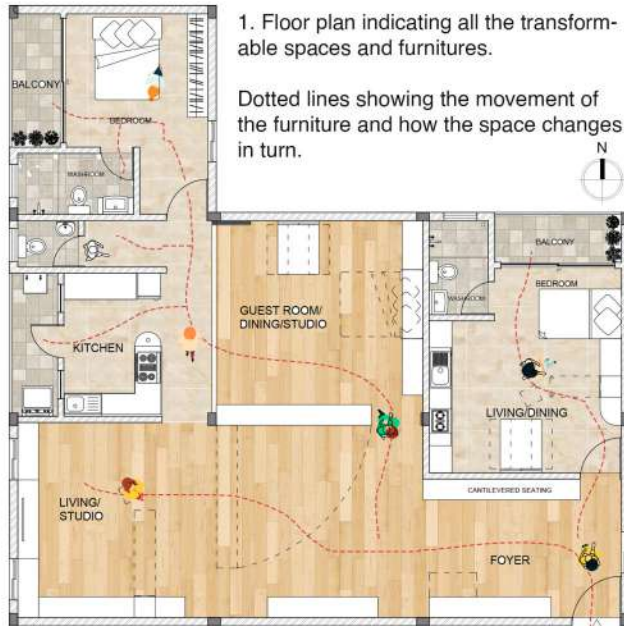


FLOOR PLATE AND NEIGHBOURING MODULES - THE SITE IS LOCATED AMID AN URBAN LOCALITY OF BANGALORE , MORE OF TECH PARKS SUPPERMARTS APPARTMENTS AND COMMERCIAL BUILDINGS ARE PRESENT AS CONTEXT TO THE SITE , THE MODULE IS PRESENT AT 3RD FLOOR OF THE APARTMENT, THE FLOOR PLATE CONSISTS OF 4 WINGS IN TOTAL.



SITE CONTEXT





Flooring color palette



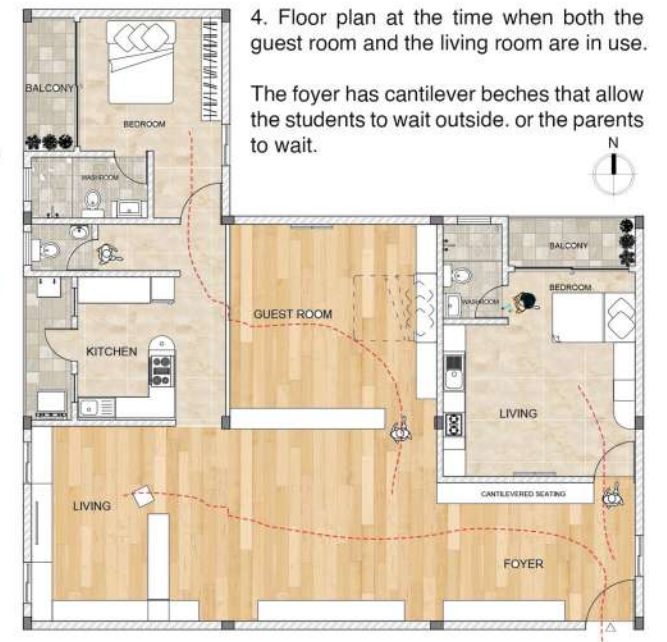
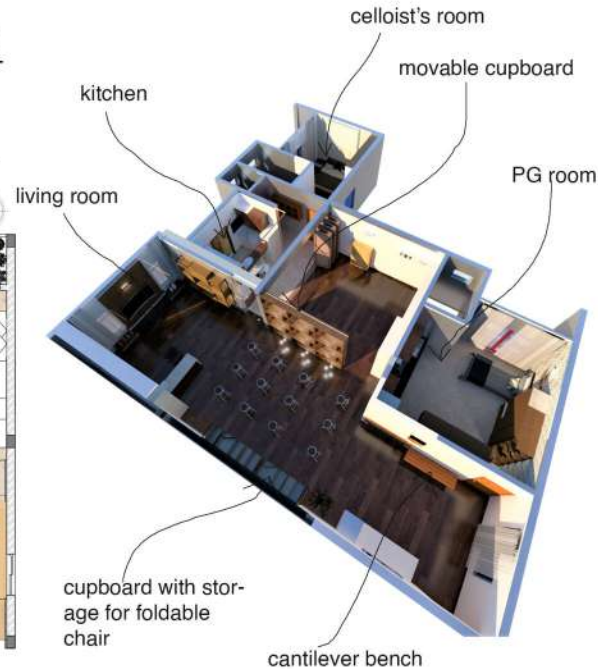
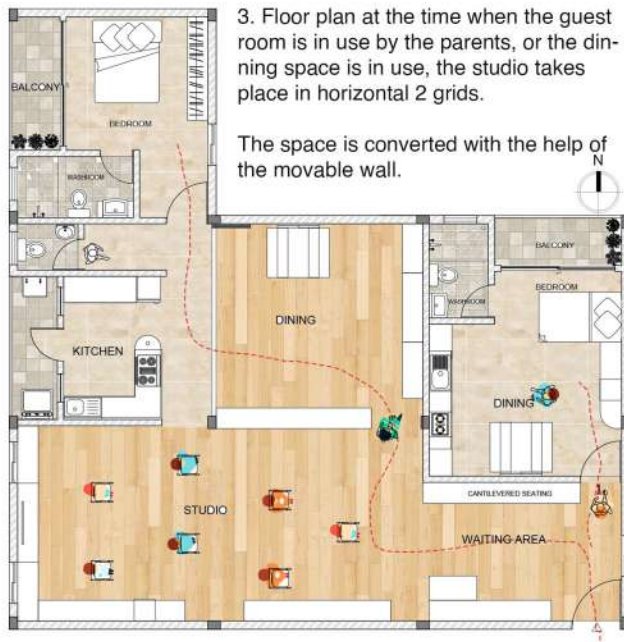
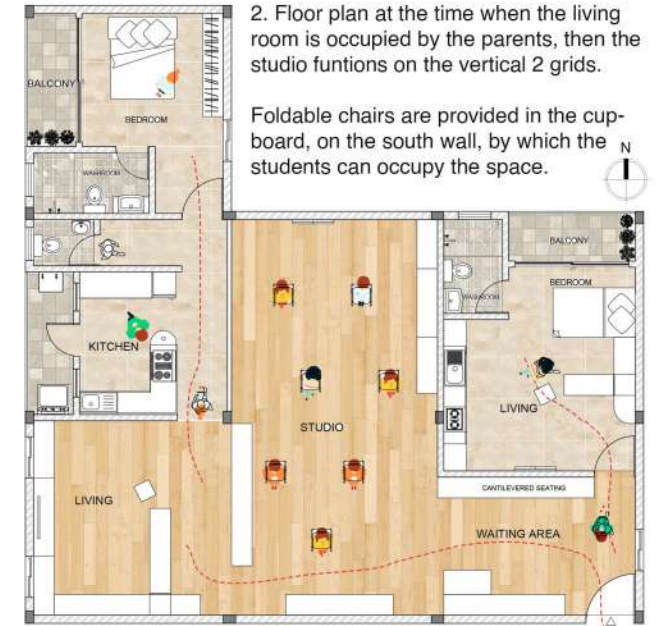
Bathroom tile 12"x12"

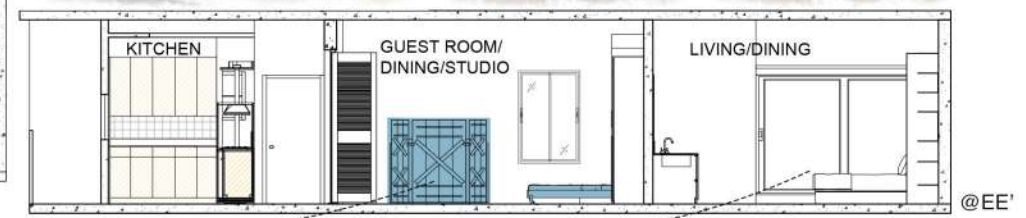
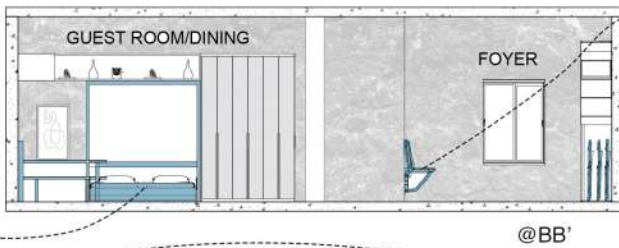
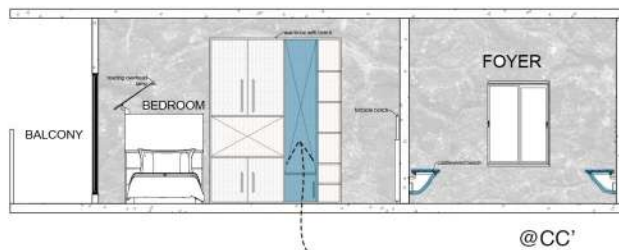
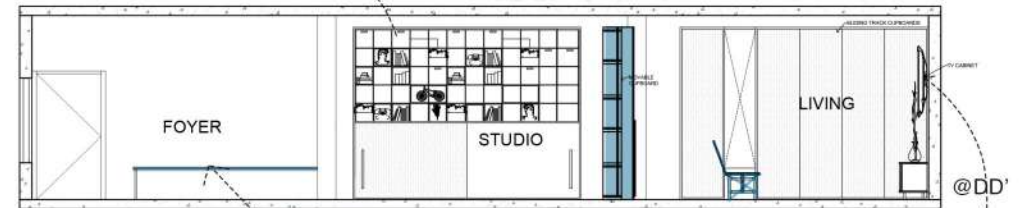
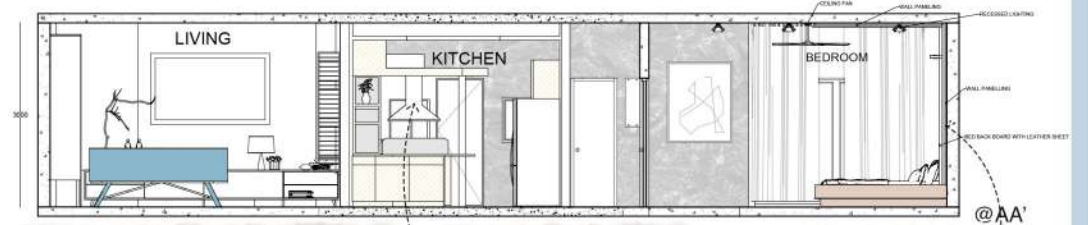
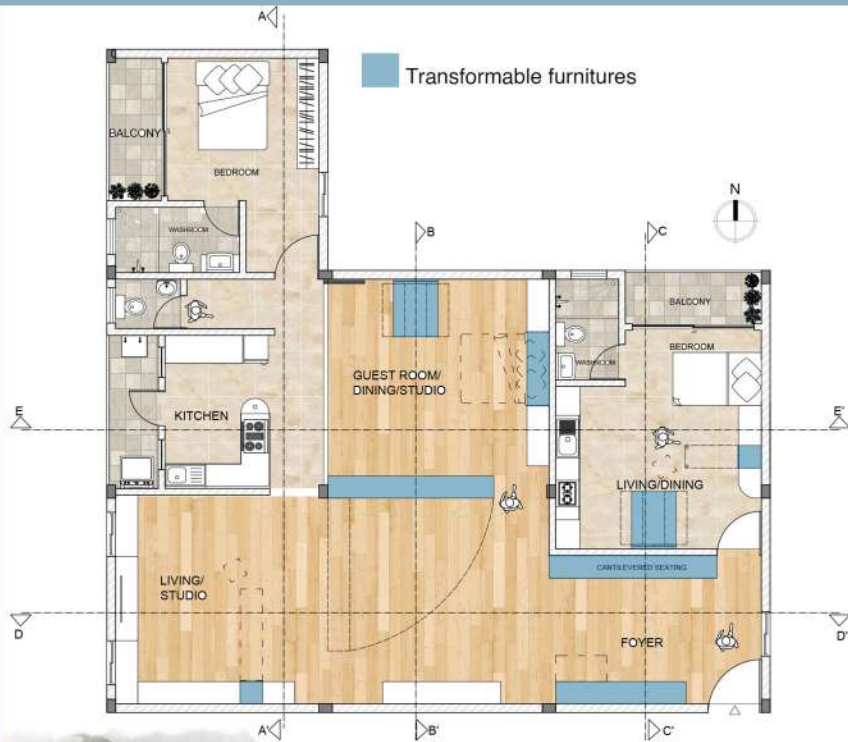


Marble Vetrified tile 39"x39"

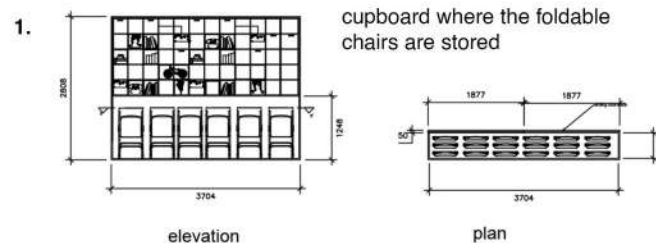
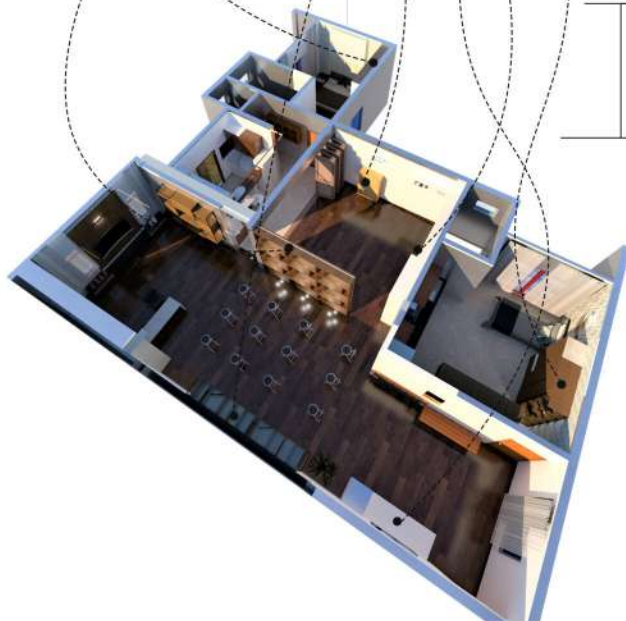


Wooden flooring tile 12"x48"

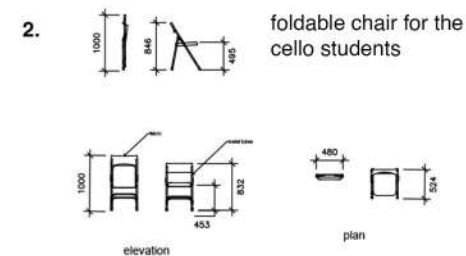




SECTIONS



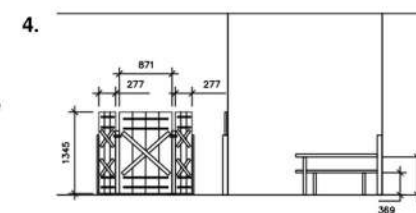
cupboard where the foldable chairs are stored



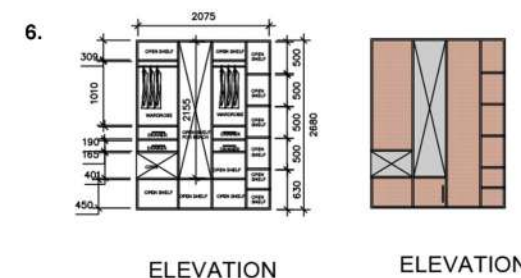
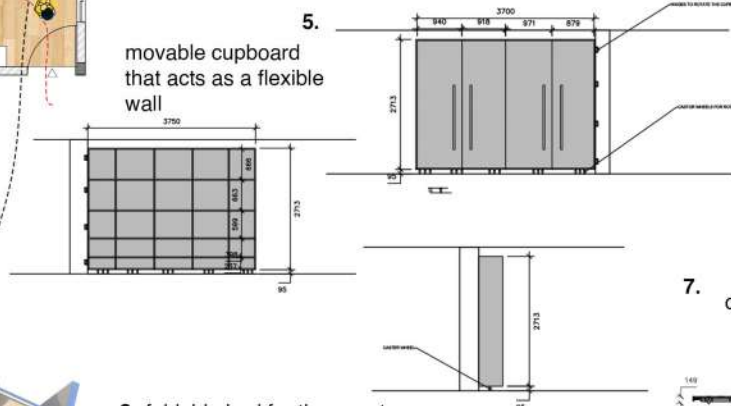
foldable chair for the cello students



the cupboard on the left is used for admin work, with a foldable table the bench on right is foldable and is used for dining purpose



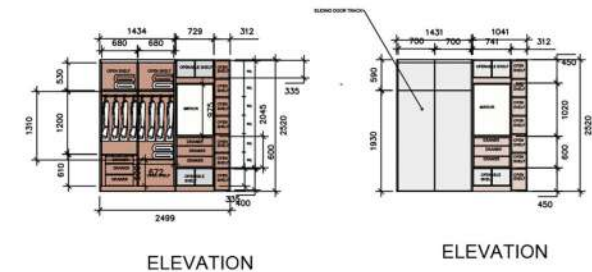
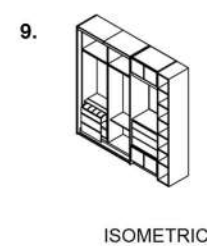
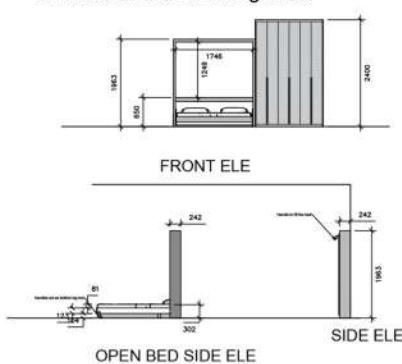
movable cupboard that acts as a flexible wall



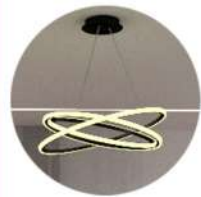
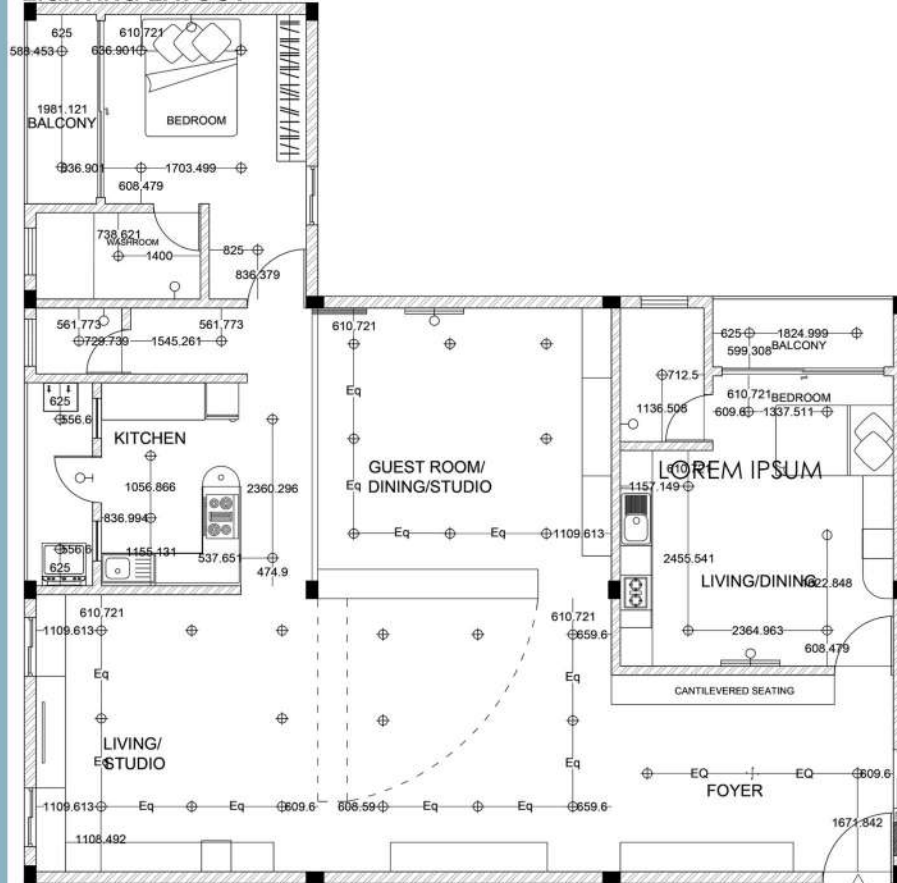
7. cantilever bench for the people waiting in the foyer



8. foldable bed for the guests



LIGHTING LAYOUT



CEILING MOUNTED
CHANDELIER AT THE
FOYER

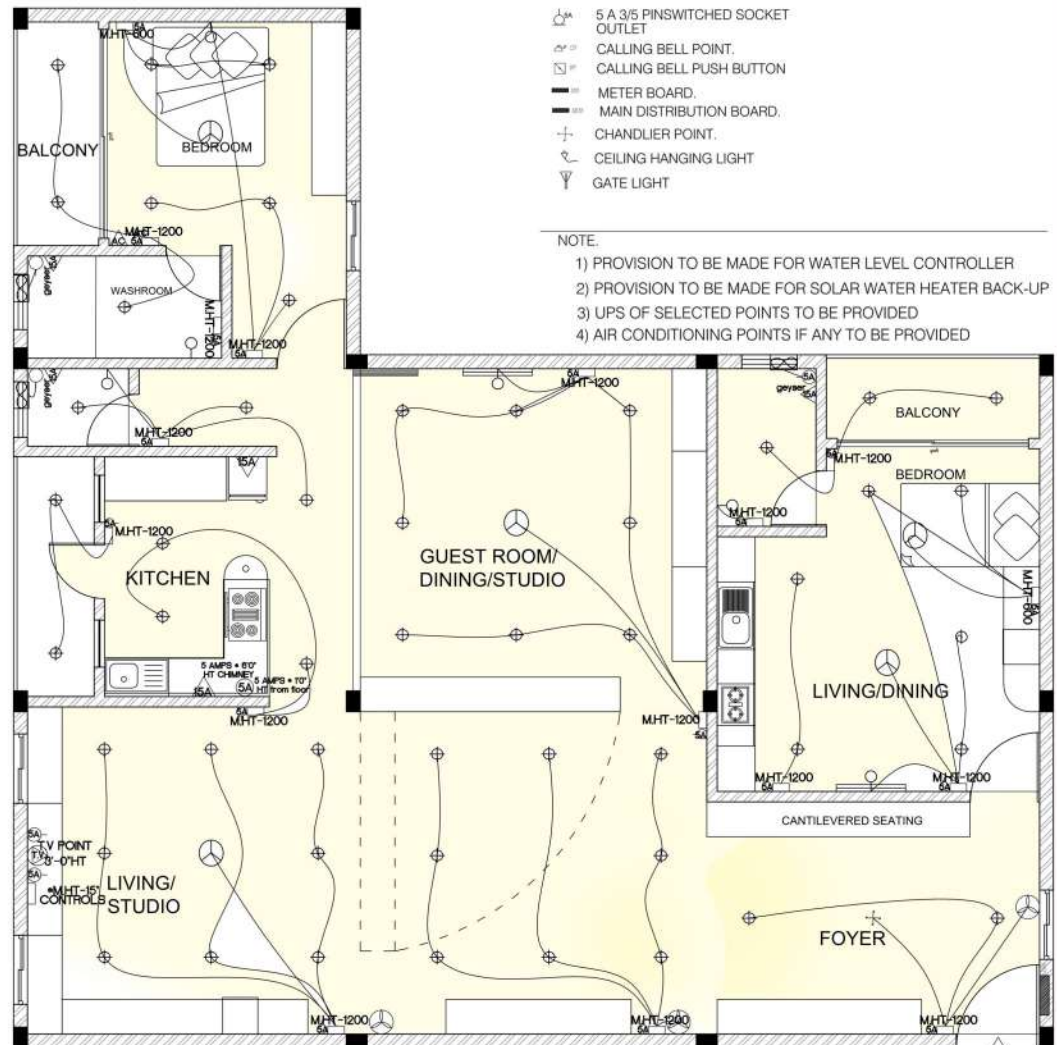


CEILING MOUNTED



WALL MOUNTED
BRACKET AT THE
BEDROOM

ELECTRICAL LAYOUT

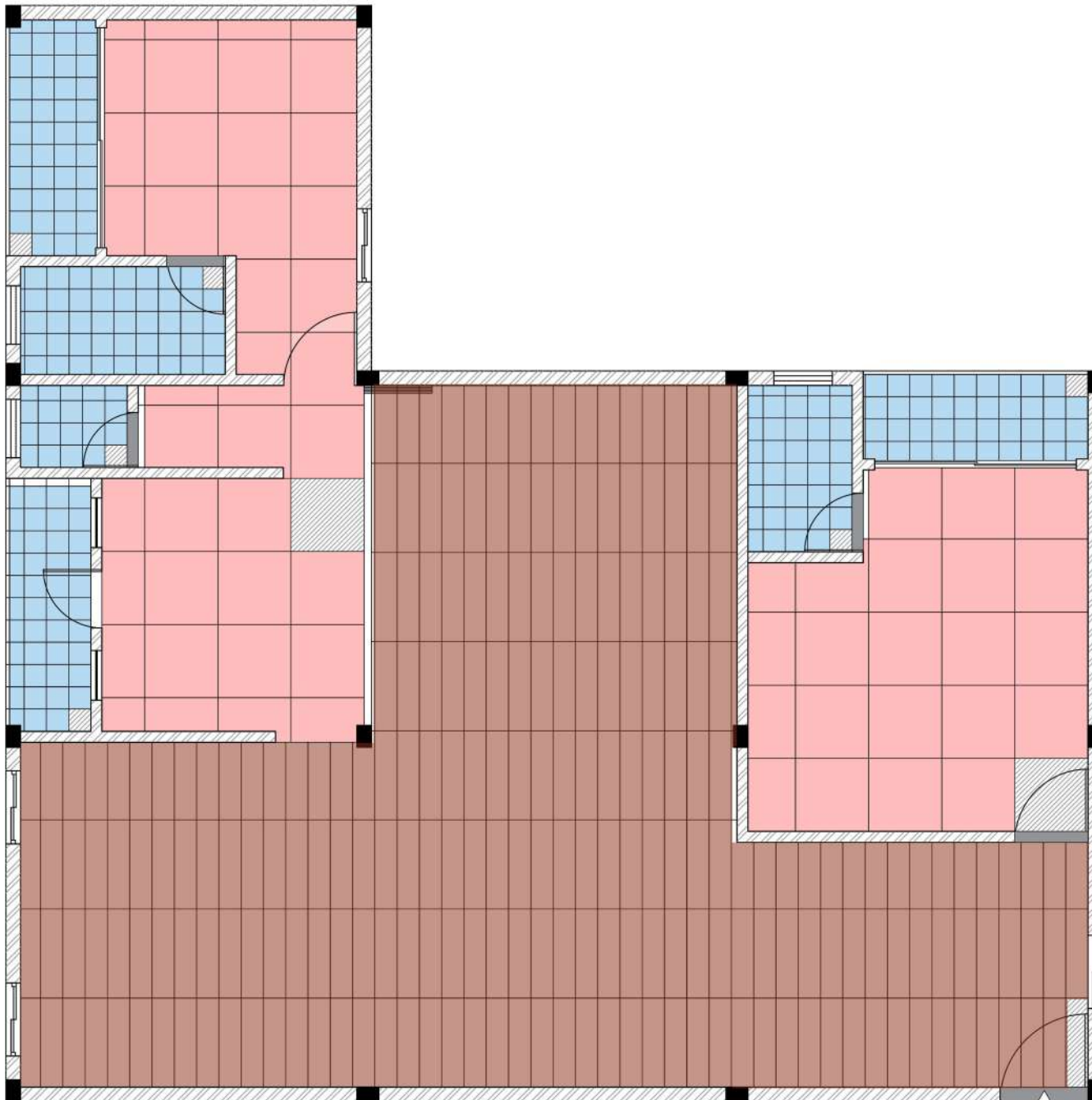


ELECTRICAL REFERENCE

- 40W TUBE LIGHT.
- ⊖ ○ BRACKET LIGHT POINT.
- ⊗ BULK HEAD LIGHT POINT.
- ⊕ CEILING LIGHT POINT.
- ⊕ ⊖ TWO WAY LIGHT POINT.
- ⊕ FAN WALL MOUNTED FAN.
- ⊕ FAN CEILING FAN POINT.
- ⊕ TELEVISION POINT.
- ⊕ TELEPHONE POINT.
- ⊕ EXHAUST FAN POINT.
- ⊕ 15 AMPERE POWER POINT.
- ⊕ 5 A 3/5 PINSWITCHED SOCKET OUTLET.
- ⊕ CALLING BELL POINT.
- ⊕ CALLING BELL PUSH BUTTON.
- ⊕ METER BOARD.
- ⊕ MAIN DISTRIBUTION BOARD.
- ⊕ CHANDLIER POINT.
- ⊕ CEILING HANGING LIGHT.
- ⊕ GATE LIGHT.

NOTE.

- 1) PROVISION TO BE MADE FOR WATER LEVEL CONTROLLER
- 2) PROVISION TO BE MADE FOR SOLAR WATER HEATER BACK-UP
- 3) UPS OF SELECTED POINTS TO BE PROVIDED
- 4) AIR CONDITIONING POINTS IF ANY TO BE PROVIDED



Flooring color palatte



Bathroom tile 12"x12"



Marble Vetrified tile 39"x39"



Wooden flooring tile 12"x48"

FLOORING LAYOUT



MARBLE VITRIFIED TILE 39" * 39"



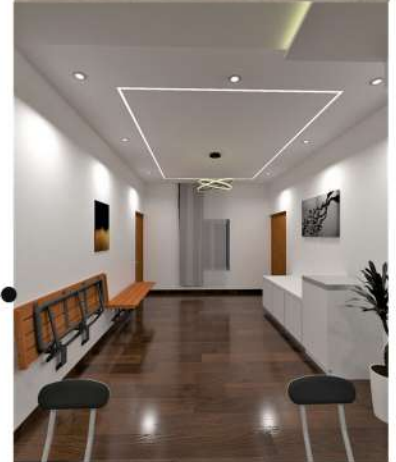
BATHROOM FLOOR TILE 12" * 12"



WOODEN FLOORING TILE 12" * 48"



STARTING TILE REFERENCE



3D VIEWS OF SPACES